

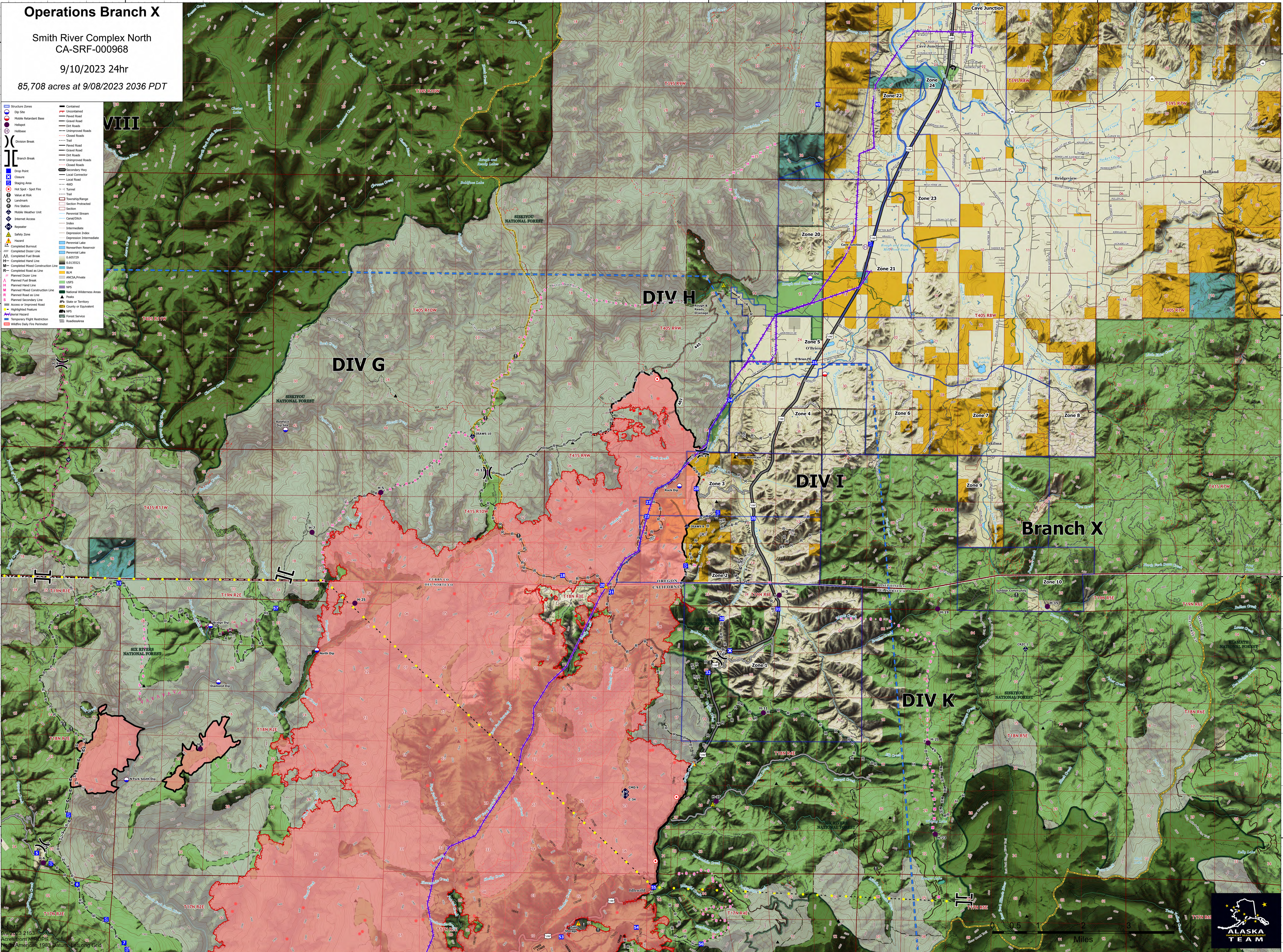
Operations Branch X

Smith River Complex North
CA-SRF-000968

9/10/2023 24hr

85,708 acres at 9/08/2023 2036 PDT

	Structure Zones		Contained
	Dip Site		Uncontained
	Mobile Retardant Base		Road
	Hillside		Gravel Road
	Hillside		Dirt Road
	Hillside		Unimproved Road
	Division Break		Closed Road
	Branch Break		Trail
	Drop Point		Secondary Hwy
	Closure		Local Road
	Hot Spot - Spot Fire		AWD
	Value at Risk		Hwy
	Landmark		Turn
	Mobile Weather Unit		Section
	Internet Access		Parental Stream
	Seperator		Cave/Cliff
	Safety Zone		Index
	Hazard		Depression
	Completed Burnout		Depression Intermediate
	Completed Fuel Break		Perennial Lake
	Completed Mixed Construction Line		Nonperennial Reservoir
	Completed Road as Line		Perennial Lake
	Planned Fuel Break		State
	Planned Fuel Break		NWSA/Private
	Planned Mixed Construction Line		USFS
	Planned Road as Line		NPS
	Planned Road as Line		National Wilderness Areas
	Access or Improved Road		Peak
	Highlighted Feature		State or Territory
	Area of Hazard		County or Equivalent
	Temporary Flight Restriction		NPS
	Wildfire Daily Fire Perimeter		Forest Service
			Roadside



AKJMT
9/10/2023 2153
Acres from NIPOPS
North American 1983 Datum, California Grid

