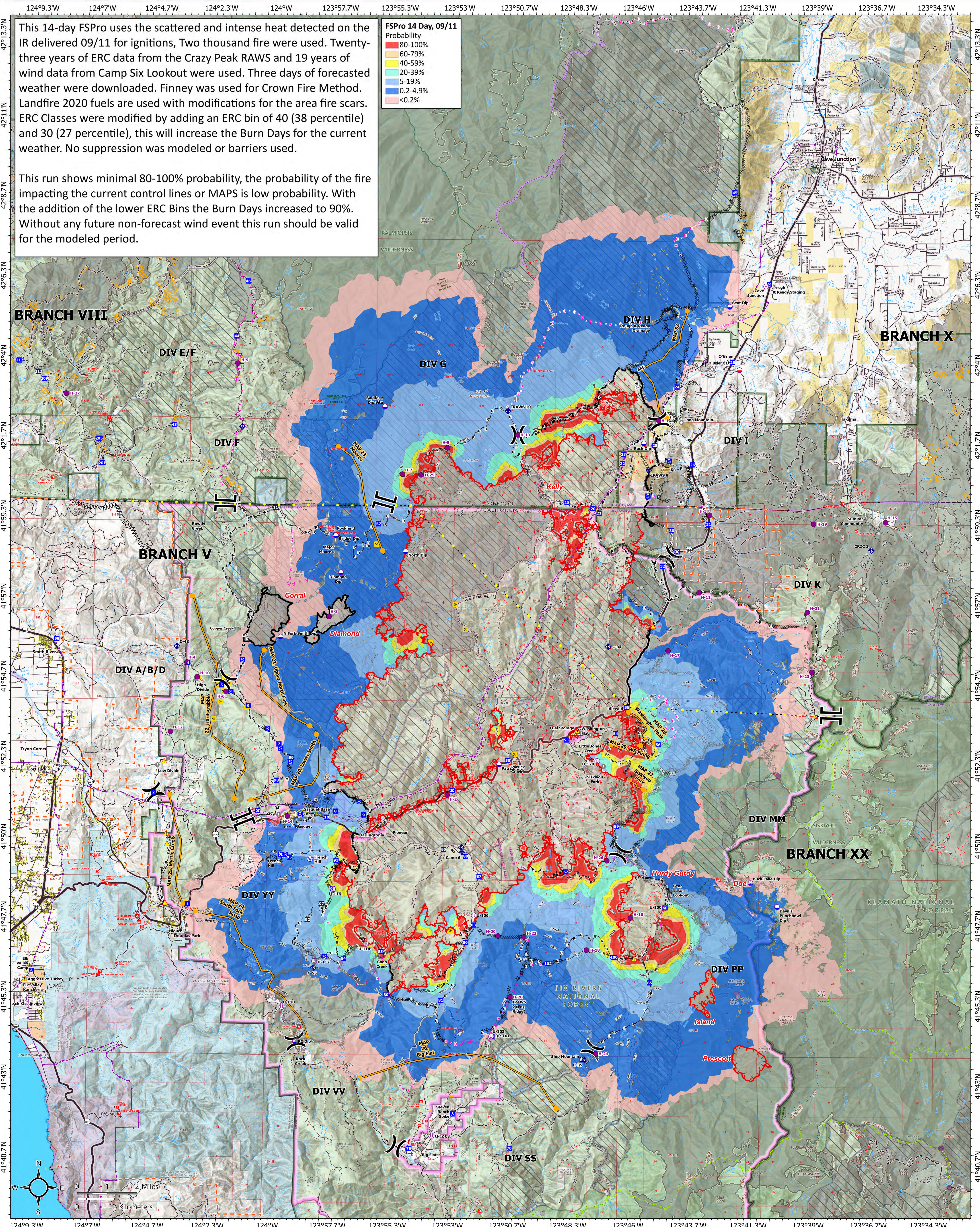
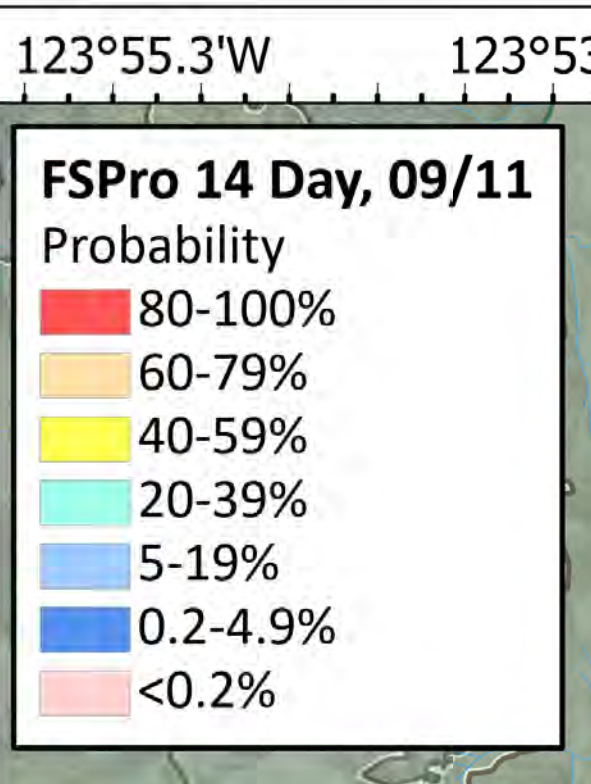


This 14-day FSPro uses the scattered and intense heat detected on the IR delivered 09/11 for ignitions, Two thousand fire were used. Twenty-three years of ERC data from the Crazy Peak RAWs and 19 years of wind data from Camp Six Lookout were used. Three days of forecasted weather were downloaded. Finney was used for Crown Fire Method. Landfire 2020 fuels are used with modifications for the area fire scars. ERC Classes were modified by adding an ERC bin of 40 (38 percentile) and 30 (27 percentile), this will increase the Burn Days for the current weather. No suppression was modeled or barriers used.

This run shows minimal 80-100% probability, the probability of the fire impacting the current control lines or MAPs is low probability. With the addition of the lower ERC Bins the Burn Days increased to 90%. Without any future non-forecast wind event this run should be valid for the modeled period.



FSPRO 14 DAY, 9/11
09/11/2023
Smith River Complex -
86,347 acres at 9/10/2023 1959

158,906 - SW2 GISS - 9/11/2023 1211 - Acres from IR and GIS - North

- Dip Site
- Mobile Retardant
- Base
- Hellspot
- Helibase
- Unimproved
- Landing Area
- Division Break
- Branch Break
- Drop Point
- Closure
- Camp
- Staging Area
- Lookout
- Value at Risk
- Landmark
- Gate
- Fire Station
- Bridge
- Mobile Weather Unit
- Internet Access
- Repeater
- Hazard
- Restricted Water
- Source
- Label Point
- IR Isolated Heat
- Possible IR Heat
- Source
- Completed Burnout
- Completed Dozer Line
- Completed Fuel Break
- Completed Hand Line
- Completed Mixed Construction Line
- Completed Road as Line
- Planned Dozer Line
- Planned Fuel Break
- Planned Hand Line
- Planned Road as Line
- Planned Secondary Line
- Access or Improved
- Highlighted Feature
- Management Action
- Point
- Repair Line
- Contained
- Uncontained
- Powerline
- Substation
- Structure
- Completed Timber Harvest (2003-present)
- FS Roadless Area
- Smith River NRA (IA Responsibility)
- Fire History
- Federal Wilderness
- Boundary
- Bureau of Indian Affairs (BIA)
- Bureau of Land Management (BLM)
- Local Government
- National Park Service (NPS)
- State
- US Forest Service (USFS)
- Private/Undetermined

