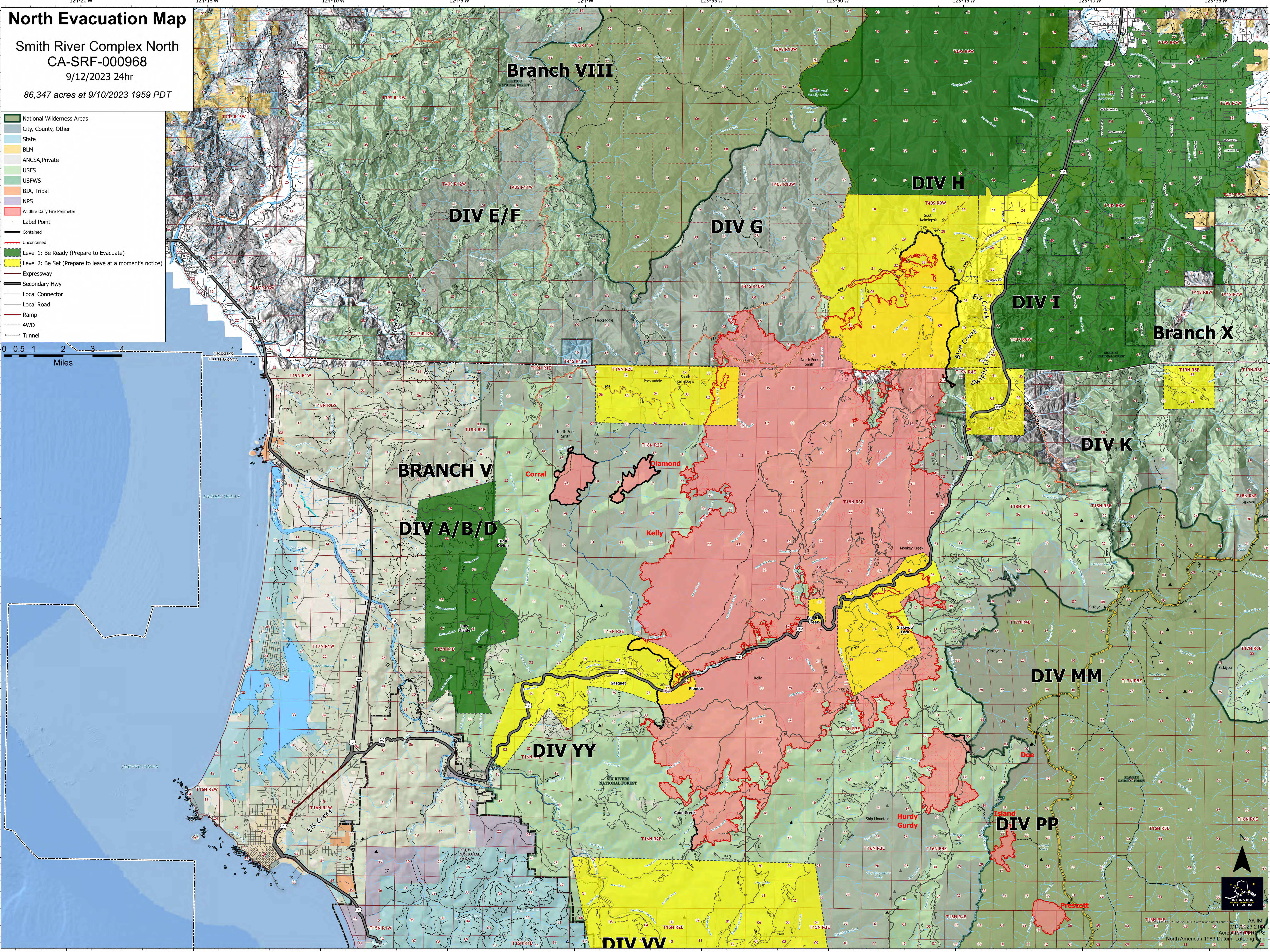
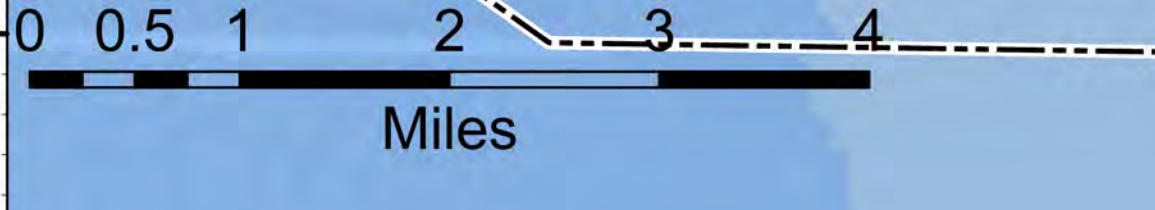


# North Evacuation Map

Smith River Complex North  
CA-SRF-000968  
9/12/2023 24hr  
86,347 acres at 9/10/2023 1959 PDT

- National Wilderness Areas
- City, County, Other
- State
- BLM
- ANCSA, Private
- USFS
- USFS
- BIA, Tribal
- NPS
- Wildfire Daily Fire Perimeter
- Label Point
- Contained
- Uncontained
- Level 1: Be Ready (Prepare to Evacuate)
- Level 2: Be Set (Prepare to leave at a moment's notice)
- Expressway
- Secondary Hwy
- Local Connector
- Local Road
- Ramp
- 4WD
- Tunnel



AK IMT  
9/11/2023 2:14  
Acres from NUR of S  
North American 1983 Datum, Lat, Long, UTM