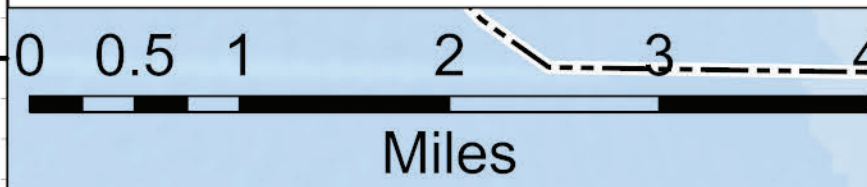


North Evacuation Map

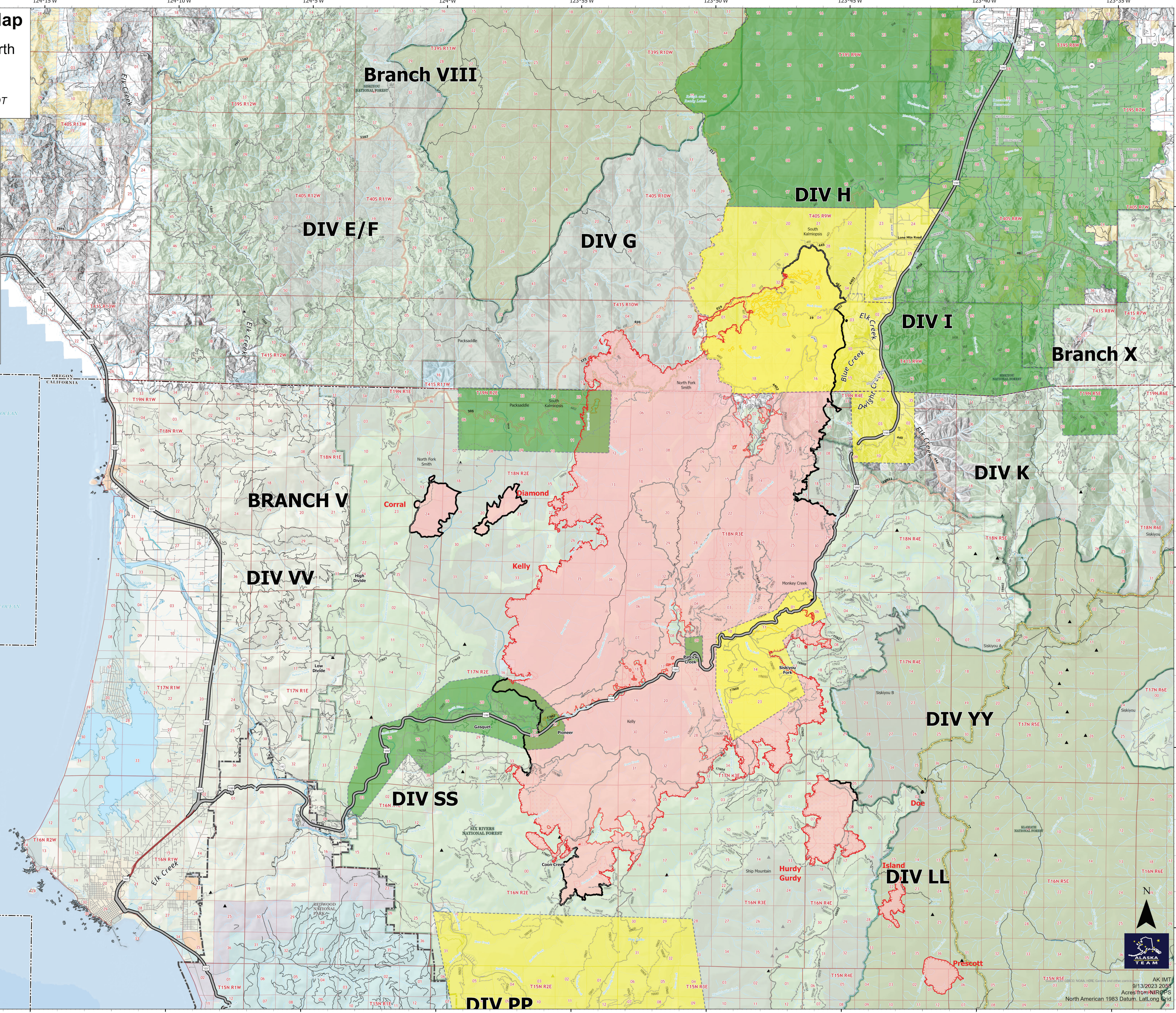
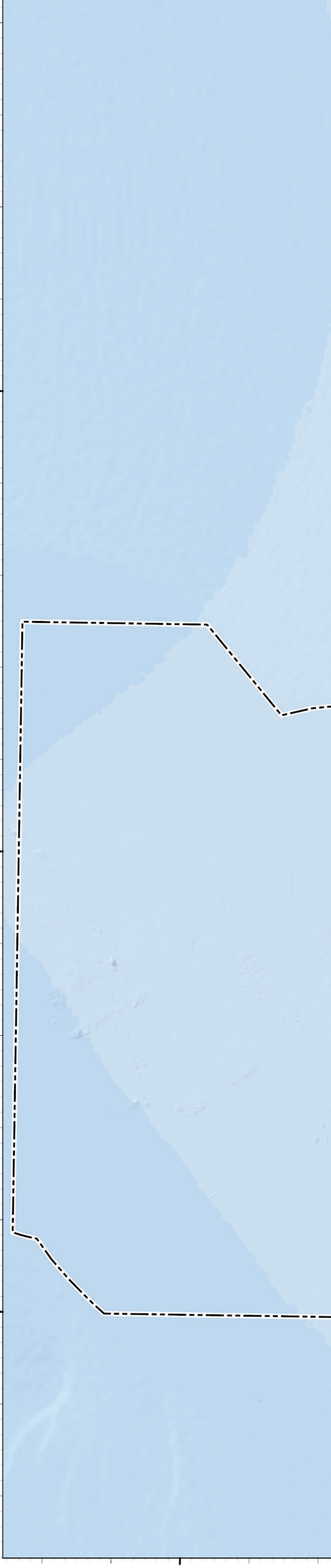
Smith River Complex North
CA-SRF-000968
9/14/2023 24hr

87,192 acres at 9/12/2023 2007 PDT

- National Wilderness Areas
- City, County, Other
- State
- BLM
- ANCSA, Private
- USFS
- USFWS
- BIA, Tribal
- NPS
- Wildfire Daily Fire Perimeter
- Label Point
- Contained
- Uncontained
- Level 1: Be Ready (Prepare to Evacuate)
- Level 2: Be Set (Prepare to leave at a moment's notice)
- Expressway
- Secondary Hwy
- Local Connector
- Local Road
- Ramp
- 4WD
- Tunnel



Miles



AK IMT
9/13/2023 2007
Acres from NWR GPS
North American 1983 Datum, Lat/Long Grid