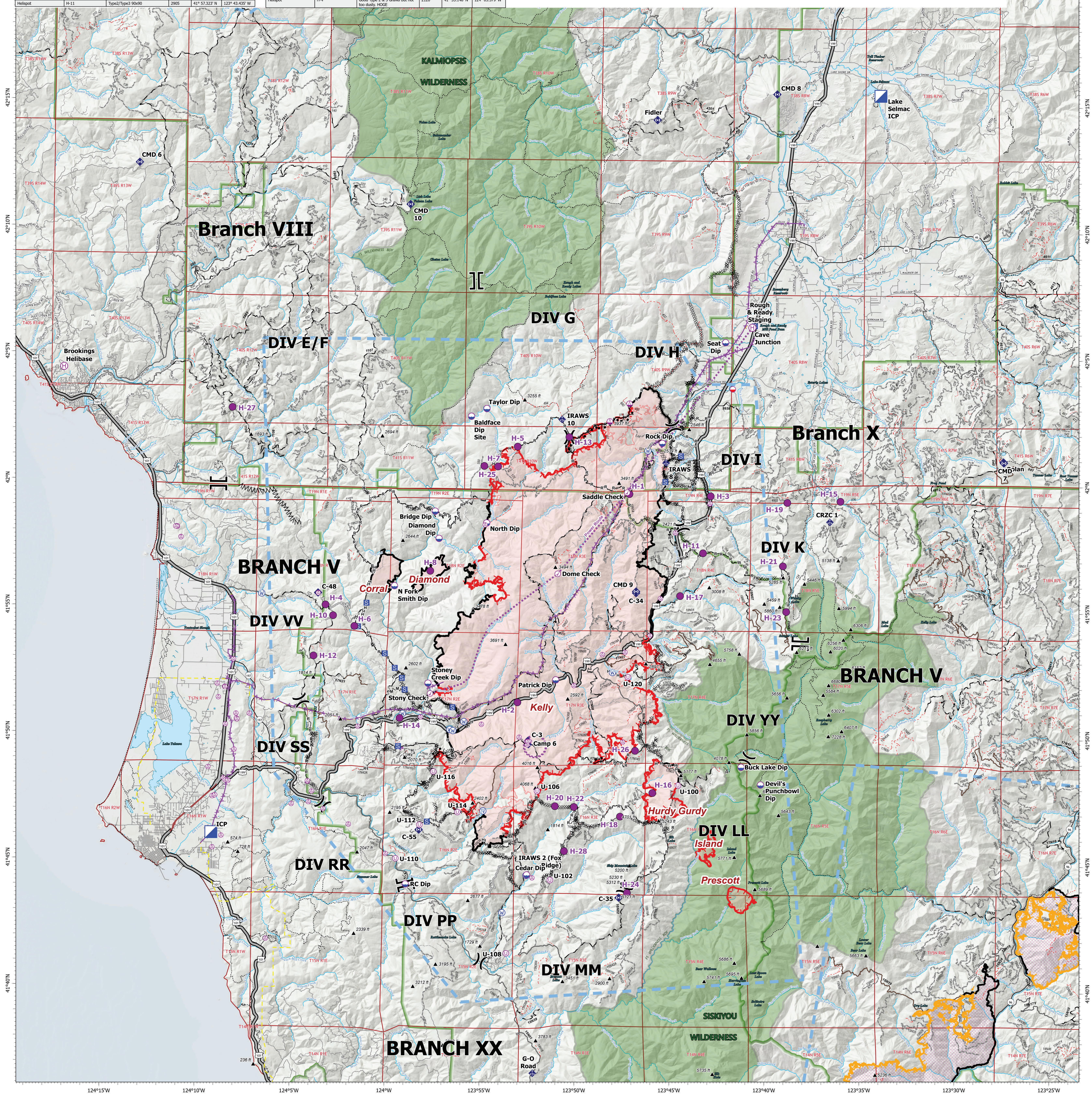


Point Type	Label	Comments	Elevation	Latitude	Longitude	Point Type	Label	Comments	Elevation	Latitude	Longitude	Point Type	Label	Comments	Elevation	Latitude	Longitude
Aviation Check Point	Dome Check			41° 56.462' N	123° 51.144' W	Helispot	H-12	Large open gravel pit. Type 2&3. HOGE	1920	41° 53.120' N	124° 03.944' W	Helispot	H-5	Potential dust abatement needed. Type 3 only HOGE	1612	42° 01.470' N	123° 53.295' W
Aviation Check Point	Saddle Check			41° 51.680' N	123° 47.798' W	Helispot	H-13	Type 2-3 approved. Dust abate.	4000	42° 01.867' N	123° 50.567' W	Helispot	H-6		3100	42° 00.602' N	123° 55.050' W
Aviation Check Point	Stony Check			42° 02.651' N	123° 57.796' W	Helispot	H-14	Type 1 or Type 2	252	41° 59.699' N	123° 50.395' W	Helispot	H-7	Type 2 and 3 approved. Dust abate. / minimal improvements needed for small trees. No other Hazards identified. Type 2 or 3. No Dust abatement needed	3000	41° 56.525' N	123° 57.698' W
Dip Site	Baldface Dip Site	Large pool with large bedrock outcropping on SW side of pool (River left)	1449	42° 02.651' N	123° 57.796' W	Helispot	H-15	Approved. Type 2 or Type 3	2000	41° 59.400' N	123° 38.180' W	Helispot	H-8				
Dip Site	Bridge Dip	Possible Dip Site up stream of bridge	900	41° 58.884' N	123° 57.630' W	Helispot	H-16	ARCH cleared by ARCH SULLIVAN 9/07/2023	3715	41° 47.832' N	123° 46.004' W	Mobile Retardant Base			1400	42° 03.812' N	123° 41.931' W
Dip Site	Buck Lake Dip	Approved by READS. Has not been utilized.	4292	41° 48.879' N	123° 41.335' W	Helispot	H-17	Type2/Type3	1501	41° 55.627' N	123° 44.629' W	Mobile Weather Unit	Camp 6		3684	41° 49.700' N	123° 52.578' W
Dip Site	Cedar Dip					Helispot	H-18	Approved. Type 2 helicopter per Helibase.	4685	41° 46.889' N	123° 47.702' W	Mobile Weather Unit	CRZC 1		3700	41° 58.583' N	123° 36.732' W
Dip Site	Devil's Punchbowl Dip	READS approved	4760	41° 48.185' N	123° 40.299' W	Helispot	H-19	Type2/Type3	3616	41° 59.338' N	123° 38.994' W	Mobile Weather Unit	G-O Road		3780	41° 38.715' N	123° 52.196' W
Dip Site	Diamond Dip	Diamond Dip	700	41° 57.811' N	123° 57.412' W	Helispot	H-20	Needs Improvement-DIV VV is aware/ ARCH cleared by ARCH SULLIVAN 9/07/2023	3144	41° 47.275' N	123° 51.144' W	Mobile Weather Unit	IRAWS 10		4626	42° 02.561' N	123° 50.860' W
Dip Site	N Fork Smith Dip	clutter edit	1200	41° 55.520' N	123° 59.741' W	Helispot	H-21	Type2/Type3 - Must have dust abatement.	4629	41° 56.770' N	123° 39.209' W	Mobile Weather Unit	IRAWS 2 (Fox Ridge)		3448	41° 48.902' N	123° 50.638' W
Dip Site	North Dip					Helispot	H-22		1876	41° 47.252' N	123° 50.140' W	Repeater	Bolan		6221	42° 00.992' N	123° 27.555' W
Dip Site	Patrick Dip					Helispot	H-23	Type2/Type3	5480	41° 55.027' N	123° 39.011' W	Repeater	C-3		3708	41° 49.945' N	123° 52.604' W
Dip Site	RC Dip	Potential Dip Site	345	41° 44.143' N	123° 58.995' W	Helispot	H-24		4982	41° 43.878' N	123° 47.297' W	Repeater	C-34		3096	41° 55.726' N	123° 46.908' W
Dip Site	Rock Dip					Helispot	H-25	Approved for Type 2	3000	42° 00.678' N	123° 54.330' W	Repeater	C-35		5310	41° 43.686' N	123° 47.732' W
Dip Site	Seat Dip					Helispot	H-26		3005	41° 46.499' N	123° 48.939' W	Repeater	C-48		2293	41° 55.617' N	124° 03.789' W
Dip Site	Stony Creek Dip	clutter edit	1457	42° 05.650' N	123° 42.329' W	Helispot	H-27	Type II Helicopter	1359	42° 05.907' N	124° 08.434' W	Repeater	C-55		2791	41° 46.298' N	123° 58.317' W
Dip Site	Taylor Dip					Helispot	H-28		3538	41° 55.504' N	123° 50.640' W	Repeater	CMD 10		4626	42° 02.561' N	123° 50.860' W
Helibase	Brookings Helibase		466	42° 04.433' N	124° 17.390' W	Helispot	H-3	Good Type 1-3 approved. No dust abatement.	1700	41° 59.577' N	123° 43.053' W	Repeater	CMD 7		6222	42° 00.954' N	123° 27.535' W
Helibase	Cave Junction		1378	42° 06.250' N	123° 40.917' W	Helispot	H-4	Good Type 2 & 3 Gravel but not too dusty. HOGE	2120	41° 55.148' N	124° 03.379' W						
Helibase	H-1	HIGE needs dust abatement.	3500	41° 59.620' N	123° 49.280' W												
Helispot	H-10	Good gravel. Type 3 Only. 2-way approach. HOGE	2400	41° 54.727' N	124° 02.973' W												
Helispot	H-11	Type2/Type3 9x0x0	2905	41° 57.323' N	123° 43.438' W												



Smith River Complex North
 CA-SRF-000968
 9/15/2023
 88,450 acres at 9/13/2023 2320
 PDT

<ul style="list-style-type: none"> ⊙ Aviation Check Point ⊙ Helibase ⊙ Mobile Retardant Base ⊙ Helispot ⊙ Dip Site ⊙ Sling Site ⊙ Unimproved Landing Area ⊙ Aerial Hazard ⊙ Branch Break ⊙ Division Break 	<ul style="list-style-type: none"> ⊙ Hot Spot - Spot Fire ⊙ Incident Command Post ⊙ Staging Area ⊙ Repeater ⊙ Mobile Weather Unit ⊙ Water Source ⊙ Contained ⊙ Uncontained ⊙ Contained ⊙ Uncontained (OTHER) 	<ul style="list-style-type: none"> ⊙ Completed Burnout ⊙ Completed Dozer Line ⊙ Completed Fuel Break ⊙ Completed Hand Line ⊙ Completed Mixed Construction Line ⊙ Completed Road as Line ⊙ Access or Improved Road ⊙ Aerial Hazard ⊙ Aviation Route ⊙ UAS Launch and Recovery Zone 	<ul style="list-style-type: none"> ⊙ Temporary Flight Restriction ⊙ Wildfire Daily Fire Perimeter ⊙ Wildfire Daily Perimeter (OTHER) ⊙ Federal Wilderness Boundary ⊙ National Forest Boundary ⊙ Transmission Lines ⊙ Paved Road ⊙ Gravel Road ⊙ Dirt Roads 	<ul style="list-style-type: none"> ⊙ Unimproved Roads ⊙ Closed Roads ⊙ Expressway ⊙ Secondary Hwy ⊙ Local Connector ⊙ Local Road ⊙ Ramp ⊙ 4WD ⊙ Tunnel ⊙ Trail
---	--	---	---	--




0 0.75 1.5 3 Nautical Miles

Datum: North American 1983

AK IMT Updated: 9/14/2023 2215