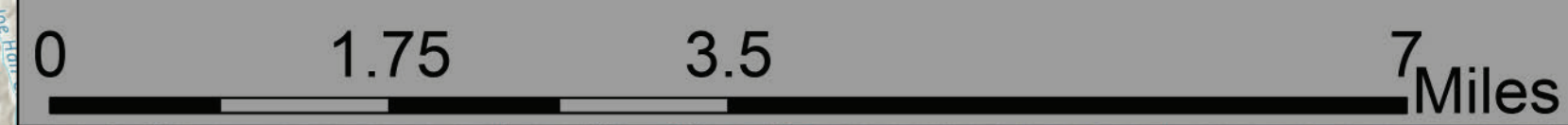


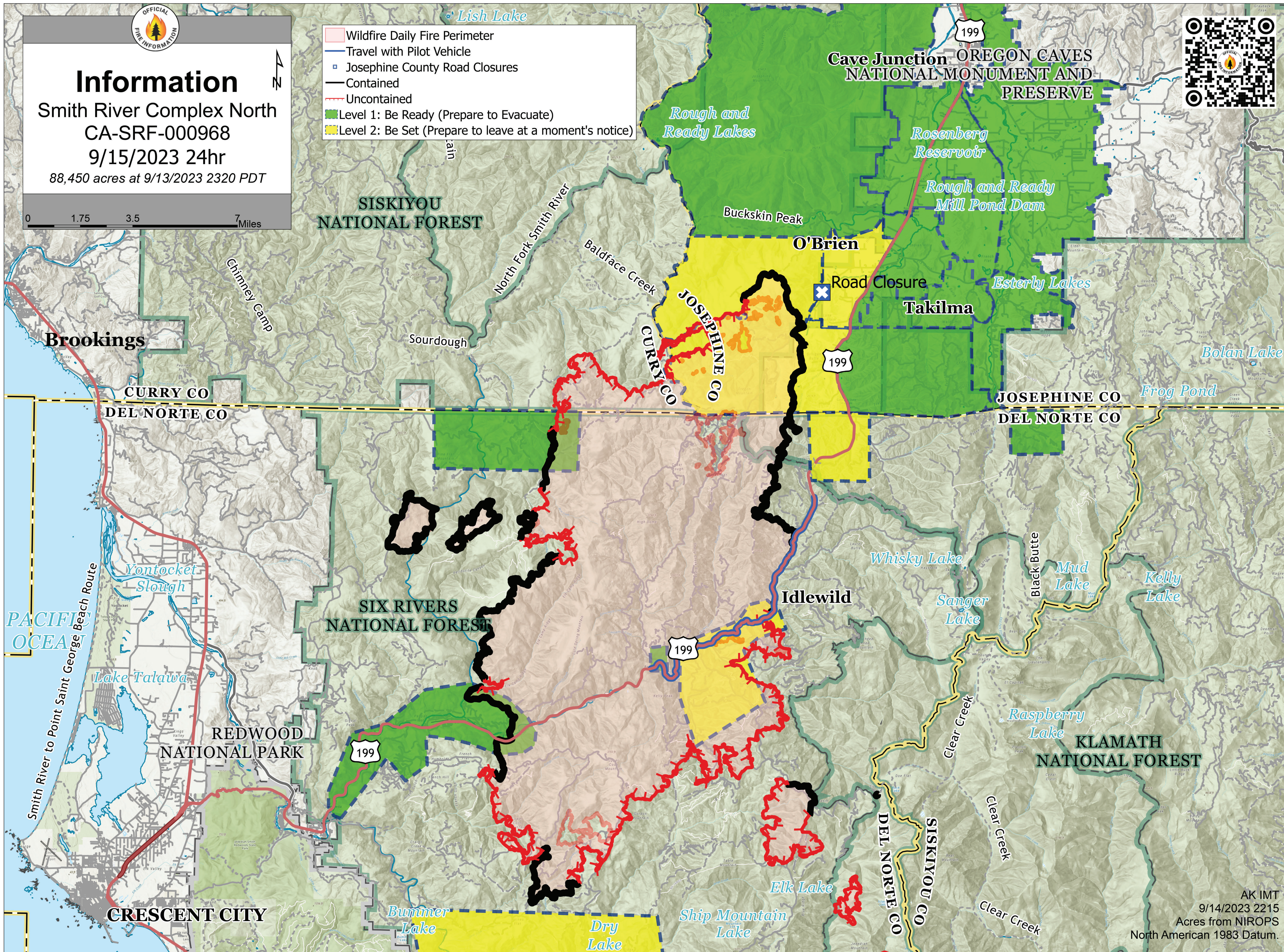


Information

Smith River Complex North
CA-SRF-000968
9/15/2023 24hr
88,450 acres at 9/13/2023 2320 PDT



- Wildfire Daily Fire Perimeter
- Travel with Pilot Vehicle
- Josephine County Road Closures
- Contained
- Uncontained
- Level 1: Be Ready (Prepare to Evacuate)
- Level 2: Be Set (Prepare to leave at a moment's notice)



AK IMT
9/14/2023 2215
Acres from NIROPS
North American 1983 Datum.