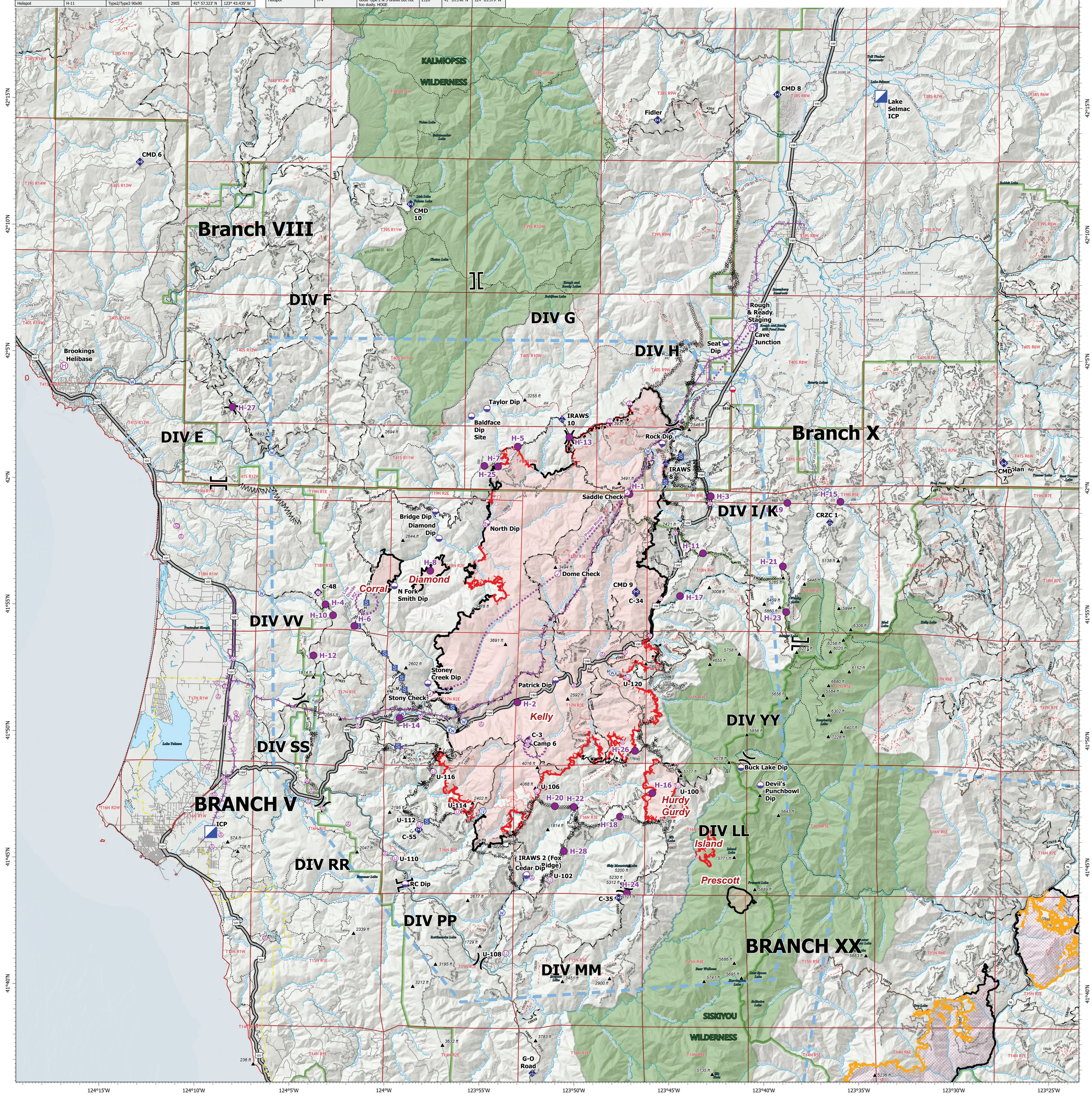


Point Type	Label	Comments	Elevation	Latitude	Longitude	Point Type	Label	Comments	Elevation	Latitude	Longitude	Point Type	Label	Comments	Elevation	Latitude	Longitude
Aviation Check Point	Dome Check			41° 56.462' N	123° 51.144' W	Helispot	H-12	Large open gravel pit. Type 2&3. HOGE	1920	41° 53.120' N	124° 03.964' W	Helispot	H-5	Potential dust abatement needed. Type 3 only HOGE	1612	41° 54.312' N	123° 53.292' W
Aviation Check Point	Saddle Check			41° 59.693' N	123° 47.478' W	Helispot	H-13	Type 2-3 approved. Dust abate.	4000	42° 01.867' N	123° 50.567' W	Helispot	H-6		3100	42° 00.602' N	123° 55.050' W
Aviation Check Point	Stony Check			41° 51.680' N	123° 57.796' W	Helispot	H-14	Type 2 or Type 3	252	41° 50.699' N	123° 50.395' W	Helispot	H-7	Type 2 and 3 approved. Dust abate. / minimal improvements needed 6-8 small trees. No other Hazards identified. Type 2 or 3. No Dust abatement needed	3000	41° 56.525' N	123° 57.688' W
Dip Site	Baldface Dip Site	Large pool with large bedrock outcropping on SW side of pool (River left)	1449	42° 02.651' N	123° 55.764' W	Helispot	H-15	Approved. Type 2 or Type 3	2000	41° 59.400' N	123° 36.180' W	Mobile Retardant Base	Camp 6		1400	42° 03.812' N	123° 41.931' W
Dip Site	Bridge Dip	Possible Dip Site up stream of bridge	900	41° 58.884' N	123° 57.630' W	Helispot	H-16	ARCH cleared by ARCH SULLIVAN 9/07/2023	3715	41° 47.832' N	123° 46.004' W	Mobile Weather Unit	CRZC 1		3684	41° 49.700' N	123° 52.578' W
Dip Site	Buck Lake Dip	Approved by READS. Has not been utilized.	4292	41° 48.879' N	123° 41.335' W	Helispot	H-17	Type2/Type3	1501	41° 56.627' N	123° 44.629' W	Mobile Weather Unit	G-O Road		3780	41° 36.715' N	123° 52.196' W
Dip Site	Cedar Dip					Helispot	H-18	Approved. Type 2 helicopter per Helibase.	4685	41° 46.889' N	123° 47.702' W	Mobile Weather Unit	IRAWS 10		4626	42° 02.561' N	123° 50.860' W
Dip Site	Devil's Punchbowl Dip	READS approved	4760	41° 46.185' N	123° 40.299' W	Helispot	H-19	Type2/Type3	3616	41° 59.338' N	123° 38.994' W	Mobile Weather Unit	IRAWS 2 (Fox Ridge)		3448	41° 48.902' N	123° 50.638' W
Dip Site	Diamond Dip	Diamond Dip	700	41° 57.811' N	123° 57.412' W	Helispot	H-20	Needs Improvement-DIV V is aware/ ARCH cleared by ARCH SULLIVAN 9/07/2023	1000	41° 01.360' N	123° 53.178' W	Repeater	Bolan		6221	42° 00.992' N	123° 27.555' W
Dip Site	N Fork Smith Dip	clutter edit	1200	41° 55.522' N	123° 59.741' W	Helispot	H-21	Type2/Type3	3144	41° 47.275' N	123° 51.144' W	Repeater	C-3		3708	41° 49.845' N	123° 52.604' W
Dip Site	North Dip					Helispot	H-22	Type2/Type3	1876	41° 47.252' N	123° 50.140' W	Repeater	C-34		3096	41° 55.726' N	123° 46.908' W
Dip Site	Patrick Dip					Helispot	H-23	Approved for Type 2	4982	41° 43.879' N	123° 47.297' W	Repeater	C-35		5310	41° 43.686' N	123° 47.727' W
Dip Site	RC Dip	Potential Dip Site	345	41° 44.143' N	123° 51.109' W	Helispot	H-24		3000	42° 00.678' N	123° 54.330' W	Repeater	C-48		2293	41° 55.617' N	124° 03.789' W
Dip Site	Rock Dip					Helispot	H-25		5480	41° 55.027' N	123° 39.011' W	Repeater	C-55		2791	41° 46.298' N	123° 58.317' W
Dip Site	Seat Dip					Helispot	H-26		3065	41° 46.499' N	123° 48.939' W	Repeater	CMD 10		4626	42° 02.561' N	123° 50.860' W
Dip Site	Stony Creek Dip	clutter edit	1457	42° 05.650' N	123° 42.329' W	Helispot	H-27	Type III Helicopter	1359	42° 05.907' N	124° 08.434' W	Repeater	CMD 5		3438	42° 15.545' N	124° 13.517' W
Dip Site	Taylor Dip					Helispot	H-28		1700	41° 59.579' N	123° 43.053' W	Repeater	CMD 7		6222	42° 00.954' N	123° 27.555' W
Helibase	Brookings Helibase		466	42° 04.433' N	124° 17.390' W	Helispot	H-3	Good Type 1-3 approved. No dust abate.	1700	41° 59.579' N	123° 43.053' W	Repeater					
Helibase	Cave Junction		1378	42° 06.250' N	123° 40.917' W	Helispot	H-4	Good Type 2 & 3 Gravel but not too dusty. HOGE	2120	41° 55.148' N	124° 03.379' W						
Helibase	H-1	HIGE needs dust abatement.	3500	41° 59.630' N	123° 49.280' W												
Helispot	H-10	Good gravel. Type 3 Only. 2-way approach. HOGE	2400	41° 54.727' N	124° 02.973' W												
Helispot	H-11	Type2/Type3 9x60	2905	41° 57.323' N	123° 43.438' W												



## Smith River Complex North

CA-SRF-000968  
9/16/2023  
88,970 acres at 9/14/2023 23:25  
PDT

<ul style="list-style-type: none"> <li>⊙ Aviation Check Point</li> <li>⊙ Helibase</li> <li>⊙ Mobile Retardant Base</li> <li>⊙ Helispot</li> <li>⊙ Dip Site</li> <li>⊙ Sling Site</li> <li>⊙ Unimproved Landing Area</li> <li>⊙ Aerial Hazard</li> <li>⊙ Branch Break</li> <li>⊙ Division Break</li> </ul>	<ul style="list-style-type: none"> <li>⊙ Incident Command Post</li> <li>⊙ Staging Area</li> <li>⊙ Repeater</li> <li>⊙ Mobile Weather Unit</li> <li>⊙ Water Source</li> <li>⊙ Contained</li> <li>⊙ Uncontained</li> <li>⊙ Contained (OTHER)</li> <li>⊙ Uncontained (OTHER)</li> </ul>	<ul style="list-style-type: none"> <li>⊙ Completed Burnout</li> <li>⊙ Completed Dozer Line</li> <li>⊙ Completed Fuel Break</li> <li>⊙ Completed Hand Line</li> <li>⊙ Completed Mixed Construction Line</li> <li>⊙ Completed Road as Line</li> <li>⊙ Access or Improved Road</li> <li>⊙ Aerial Hazard</li> <li>⊙ Aviation Route</li> <li>⊙ UAS Launch and Recovery Zone</li> </ul>	<ul style="list-style-type: none"> <li>⊙ Temporary Flight Restriction</li> <li>⊙ Wildfire Daily Fire Perimeter</li> <li>⊙ Wildfire Daily Perimeter (OTHER)</li> <li>⊙ Federal Wilderness Boundary</li> <li>⊙ National Forest Boundary</li> <li>⊙ Transmission Lines</li> <li>⊙ Paved Road</li> <li>⊙ Gravel Road</li> <li>⊙ Dirt Roads</li> </ul>	<ul style="list-style-type: none"> <li>⊙ Unimproved Roads</li> <li>⊙ Closed Roads</li> <li>⊙ Expressway</li> <li>⊙ Secondary Hwy</li> <li>⊙ Local Connector</li> <li>⊙ Local Road</li> <li>⊙ Ramp</li> <li>⊙ 4WD</li> <li>⊙ Tunnel</li> <li>⊙ Trail</li> </ul>
---	--	---	---	--

