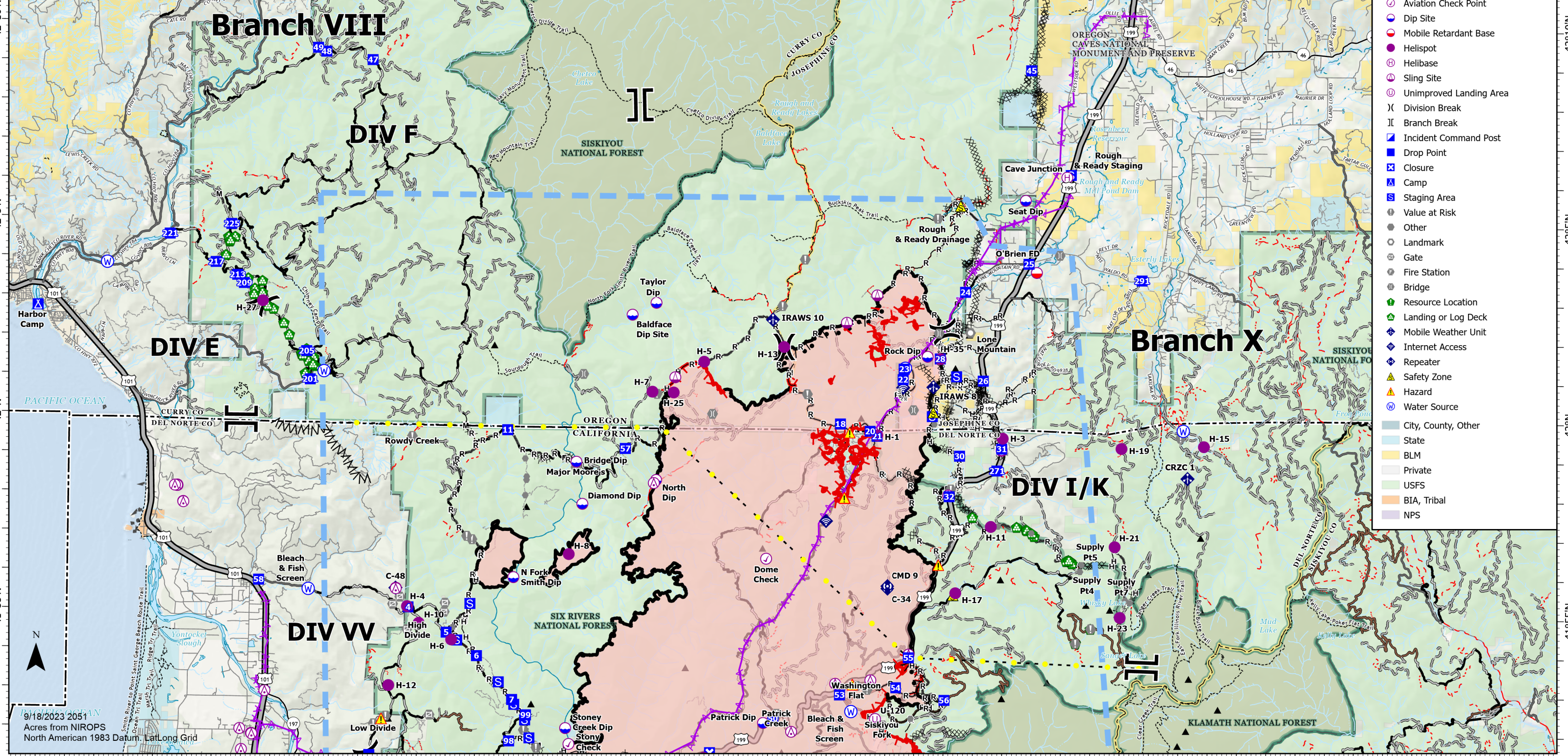
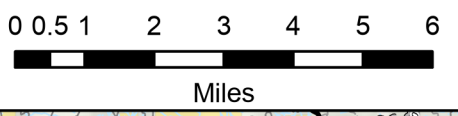


# Incident Action Map

Smith River Complex  
North  
CA-SRF-000968  
9/19/2023

92,180 acres at 9/18/2023 03:30 PDT



- Wildfire Daily Fire Perimeter
- Completed Burnout
- Completed Dozer Line
- Completed Fuel Break
- Completed Hand Line
- Completed Mixed Construction Line
- Completed Road as Line
- Highlighted Feature
- Aerial Hazard
- Temporary Flight Restriction
- Fire Edge (Field Collection)
- Contained
- Uncontained
- Aerial Hazard
- Aviation Check Point
- Dip Site
- Mobile Retardant Base
- Helispot
- Helibase
- Sling Site
- Unimproved Landing Area
- Division Break
- Branch Break
- Incident Command Post
- Drop Point
- Closure
- Camp
- Staging Area
- Value at Risk
- Other
- Landmark
- Gate
- Fire Station
- Bridge
- Resource Location
- Landing or Log Deck
- Mobile Weather Unit
- Internet Access
- Repeater
- Safety Zone
- Hazard
- Water Source
- City, County, Other
- State
- BLM
- Private
- USFS
- BIA, Tribal
- NPS

9/18/2023 2051  
Acres from NIROPS  
North American 1983 Datum, Lat/Long Grid