

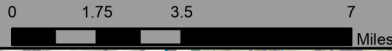


Information

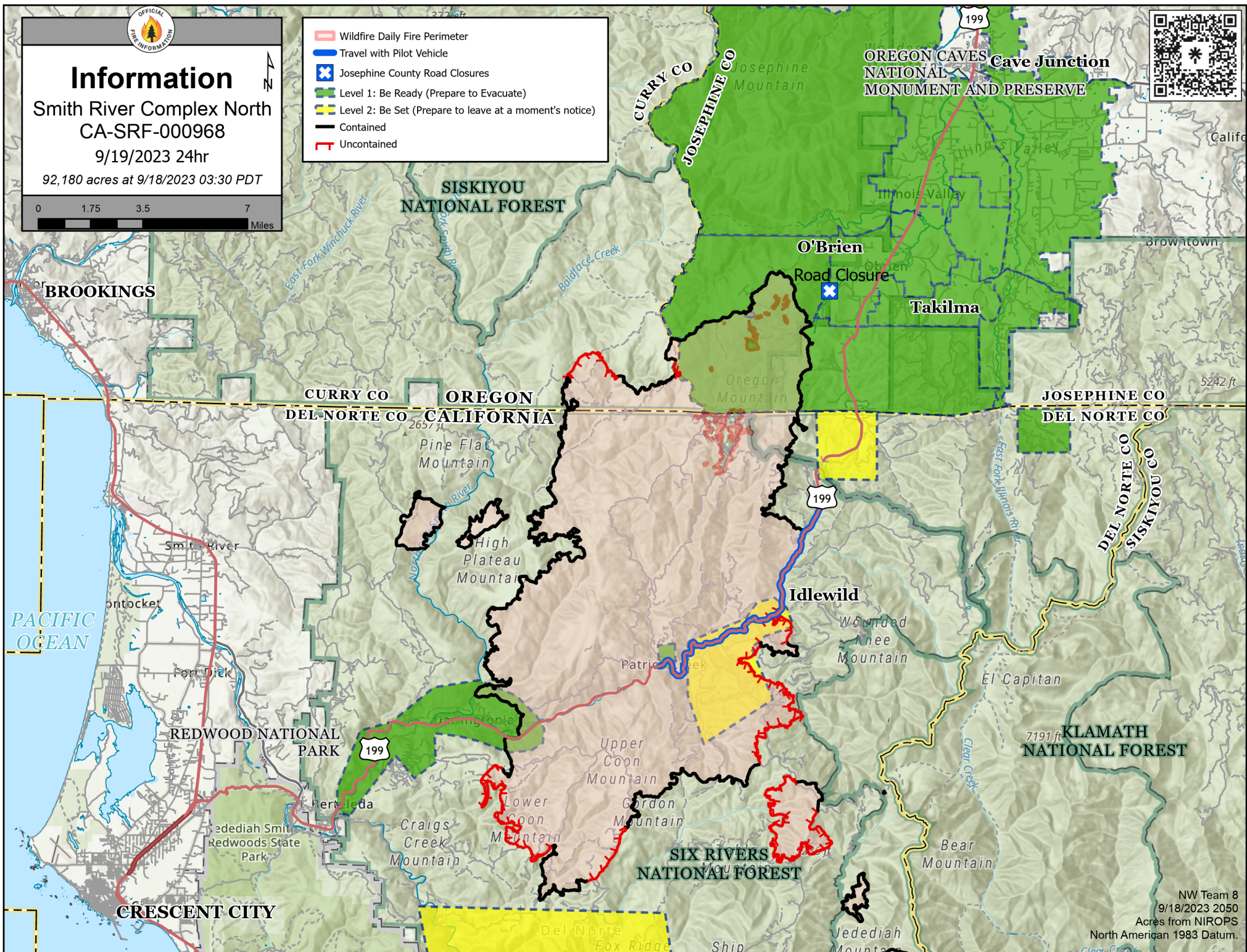
Smith River Complex North
CA-SRF-000968

9/19/2023 24hr

92,180 acres at 9/18/2023 03:30 PDT



- Wildfire Daily Fire Perimeter
- Travel with Pilot Vehicle
- Josephine County Road Closures
- Level 1: Be Ready (Prepare to Evacuate)
- Level 2: Be Set (Prepare to leave at a moment's notice)
- Contained
- Uncontained



NW Team 8
9/18/2023 2050
Acres from NIROPS
North American 1983 Datum.