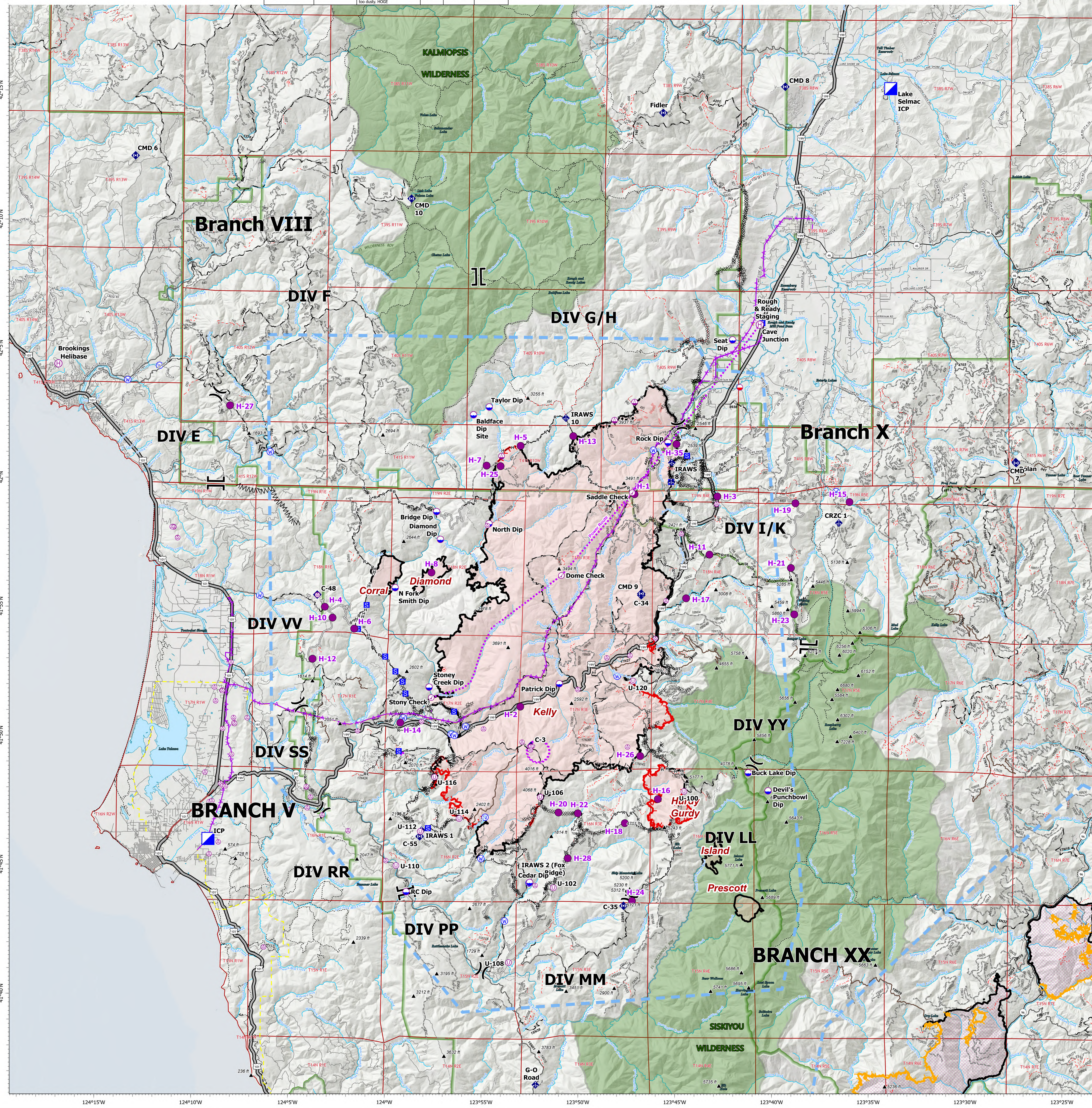


# AIR OPERATIONS NORTH

9/20/2023

Point Type	Label	Comments	Elevation	Latitude	Longitude	Point Type	Label	Comments	Elevation	Latitude	Longitude	Point Type	Label	Comments	Elevation	Latitude	Longitude
Aviation Check Point	Dome Check			41° 56.462' N	123° 51.114' W	Helispot	H-12	Large open gravel pit. Type 2&3. HOGE	1920	41° 53.120' N	124° 03.944' W	Helispot	H-5		2291	42° 01.470' N	123° 53.299' W
Aviation Check Point	Saddle Check			41° 59.693' N	123° 47.478' W	Helispot	H-13	Type 2-3 approved. Dust abate.	4000	42° 01.867' N	123° 50.567' W	Helispot	H-6	Potential dust abatement needed. Type 3 only. HOGE	1612	41° 54.312' N	124° 01.841' W
Aviation Check Point	Stony Check			41° 51.680' N	123° 57.796' W	Helispot	H-14	Type 3 or Type 2	252	41° 56.699' N	123° 59.395' W	Helispot	H-7		3310	42° 00.692' N	123° 55.050' W
Dip Site	Baldface Dip Site	Large pool with large bedrock outcropping on SW side of pool (River left)	1449	42° 02.651' N	123° 55.764' W	Helispot	H-15	Approved. Type 2 or Type 3	2000	41° 59.400' N	123° 36.180' W	Helispot	H-8	Type 2 and 3 approved. Dust abate. Minimal improvements needed for small trees. No other Hazards identified. Type 2 or 3. No Dust abatement needed	3000	41° 56.525' N	123° 57.898' W
Dip Site	Bridge Dip	Possible Dip Site up stream of bridge	900	41° 58.884' N	123° 57.630' W	Helispot	H-16	ARCH cleared by ARCH SULLIVAN 9/07/2023	3715	41° 47.832' N	123° 46.004' W	Mobile Retardant Base		non fire related	1400	42° 03.812' N	123° 41.931' W
Dip Site	Buck Lake Dip	Approved by READS. Has not been utilized.	4292	41° 48.879' N	123° 41.335' W	Helispot	H-17	Type2/Type3	1501	41° 56.627' N	123° 44.629' W	Mobile Weather Unit	CRZC 1	coords and elev from IMET	3970	41° 58.583' N	123° 36.732' W
Dip Site	Cedar Dip			41° 44.550' N	123° 52.600' W	Helispot	H-18	Approved. Type 2 helicopter per Helibase.	4685	41° 46.889' N	123° 47.702' W	Mobile Weather Unit	G-O Road	coords and elev from IMET	3780	41° 36.719' N	123° 52.196' W
Dip Site	Devil's Punchbowl Dip	READS approved	4760	41° 48.185' N	123° 40.299' W	Helispot	H-19	Type2/Type3	3616	41° 59.338' N	123° 38.994' W	Mobile Weather Unit	IRAWS 1	Coord Mts.	4116	46.536' N	122° 58.218' W
Dip Site	Diamond Dip	Diamond Dip	700	41° 57.811' N	123° 57.412' W	Helispot	H-20	Needs Improvement-DIV VV is aware/ ARCH cleared by ARCH SULLIVAN 9/07/2023	1000	41° 51.360' N	123° 53.178' W	Mobile Weather Unit	IRAWS 10	coords and elev from IMET	4026	42° 03.561' N	123° 50.960' W
Dip Site	N Fork Smith Dip	clutter edit	209	41° 55.522' N	123° 59.741' W	Helispot	H-21	Type2/Type3	3144	41° 47.275' N	123° 51.144' W	Mobile Weather Unit	IRAWS 2 (Fox Ridge)	coords and elev from IMET	3448	41° 45.502' N	123° 50.638' W
Dip Site	North Dip			41° 58.440' N	123° 54.900' W	Helispot	H-22	Approved for Type 2	3000	42° 00.678' N	123° 54.330' W	Mobile Weather Unit	IRAWS 8	coords and elev from IMET	2696	42° 00.879' N	123° 45.435' W
Dip Site	Patrick Dip			41° 52.266' N	123° 54.160' W	Helispot	H-23	Type2/Type3	5480	41° 55.027' N	123° 39.011' W	Repeater	Boban		4221	42° 00.992' N	123° 37.559' W
Dip Site	RC Dip	Potential Dip Site	345	41° 44.143' N	123° 58.995' W	Helispot	H-24	Approved for Type 2	4982	41° 43.879' N	123° 47.298' W	Repeater	C-3		3708	41° 49.845' N	123° 52.604' W
Dip Site	Rock Dip			42° 01.650' N	123° 45.641' W	Helispot	H-25	Type 2	3000	42° 00.678' N	123° 54.330' W	Repeater	C-34		3696	41° 55.726' N	123° 46.958' W
Dip Site	Seat Dip			42° 03.559' N	123° 43.329' W	Helispot	H-26	Approved for Type 2	3000	41° 46.499' N	123° 46.939' W	Repeater	C-35		5310	41° 43.686' N	123° 47.732' W
Dip Site	Stoney Creek Dip			41° 52.266' N	123° 52.910' W	Helispot	H-27	Type III Helicopter	1359	42° 05.907' N	124° 08.434' W	Repeater	C-48	High Divide	2293	41° 55.617' N	124° 03.780' W
Dip Site	Taylor Dip			42° 02.960' N	123° 54.950' W	Helispot	H-28	Good gravel. Type 3 Only. 2-way approach. HOGE	3538	41° 59.574' N	123° 50.640' W	Repeater	C-55		2791	41° 46.298' N	123° 58.317' W
Helibase	Brookings Helibase			42° 04.433' N	124° 17.390' W	Helispot	H-3	Type 1-2-3 approved. No dust abate.	1700	41° 59.574' N	123° 50.640' W	Repeater	CMD 6		3438	42° 15.545' N	124° 13.517' W
Helibase	Cave Junction			42° 06.250' N	123° 40.917' W	Helispot	H-35	Good Type 2 & 3 Gravel but not too dirty. HOGE	1906	42° 01.999' N	123° 45.210' W	Repeater	CMD 7	Buland Peak KR4312-FCK-C221 RPTIR ID: C33	6222	42° 00.954' N	123° 27.533' W
Helispot	H-10	Good gravel. Type 3 Only. 2-way approach. HOGE	2400	41° 54.727' N	124° 02.973' W	Helispot	H-4		2120	41° 55.149' N	124° 03.379' W						
Helispot	H-11	Type2/Type3/SHADE	2905	41° 57.323' N	123° 43.438' W												



**Smith River Complex North**  
 CA-SRF-000968  
 9/20/2023  
 92,727 acres at 9/19/2023 10:02 PDT

<ul style="list-style-type: none"> <li>⊙ Aviation Check Point</li> <li>⊙ Helibase</li> <li>⊙ Mobile Retardant Base</li> <li>⊙ Helispot</li> <li>⊙ Dip Site</li> <li>⊙ Sling Site</li> <li>⊙ Unimproved Landing Area</li> <li>⊙ Aerial Hazard</li> <li>⊙ Branch Break</li> <li>⊙ Division Break</li> </ul>	<ul style="list-style-type: none"> <li>⊙ Hot Spot - Spot Fire</li> <li>⊙ Incident Command Post</li> <li>⊙ Staging Area</li> <li>⊙ Repeater</li> <li>⊙ Mobile Weather Unit</li> <li>⊙ Water Source</li> <li>⊙ Contained</li> <li>⊙ Uncontained</li> <li>⊙ Contained</li> <li>⊙ Uncontained (OTHER)</li> </ul>	<ul style="list-style-type: none"> <li>⊙ Completed Burnout</li> <li>⊙ Completed Dozer Line</li> <li>⊙ Completed Fuel Break</li> <li>⊙ Completed Hand Line</li> <li>⊙ Completed Mixed Construction Line</li> <li>⊙ Completed Road as Line</li> <li>⊙ Access or Improved Road</li> <li>⊙ Aerial Hazard</li> <li>⊙ Aviation Route</li> <li>⊙ UAS Launch and Recovery Zone</li> </ul>	<ul style="list-style-type: none"> <li>⊙ Temporary Flight Restriction</li> <li>⊙ Wildfire Daily Perimeter (OTHER)</li> <li>⊙ Federal Wilderness Boundary</li> <li>⊙ National Forest Boundary</li> <li>⊙ Transmission Lines</li> <li>⊙ Paved Road</li> <li>⊙ Gravel Road</li> <li>⊙ Dirt Roads</li> <li>⊙ Unimproved Roads</li> </ul>	<ul style="list-style-type: none"> <li>⊙ Closed Roads</li> <li>⊙ Expressway</li> <li>⊙ Secondary Hwy</li> <li>⊙ Local Connector</li> <li>⊙ Local Road</li> <li>⊙ Ramp</li> <li>⊙ 4WD</li> <li>⊙ Tunnel</li> <li>⊙ Trail</li> </ul>
---	--	---	--	--

Scale: 0 0.75 1.5 3 Nautical Miles  
 Datum: North American 1983  
 PNW8 Updated: 9/19/2023 21:28