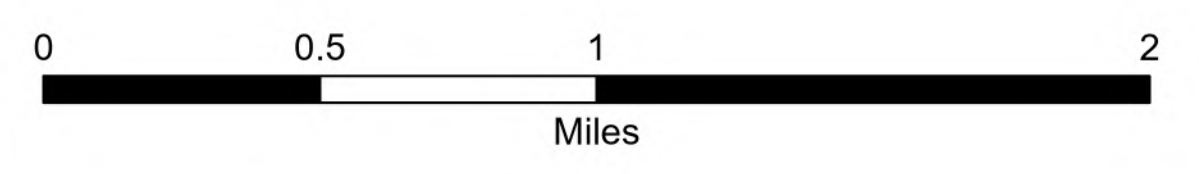


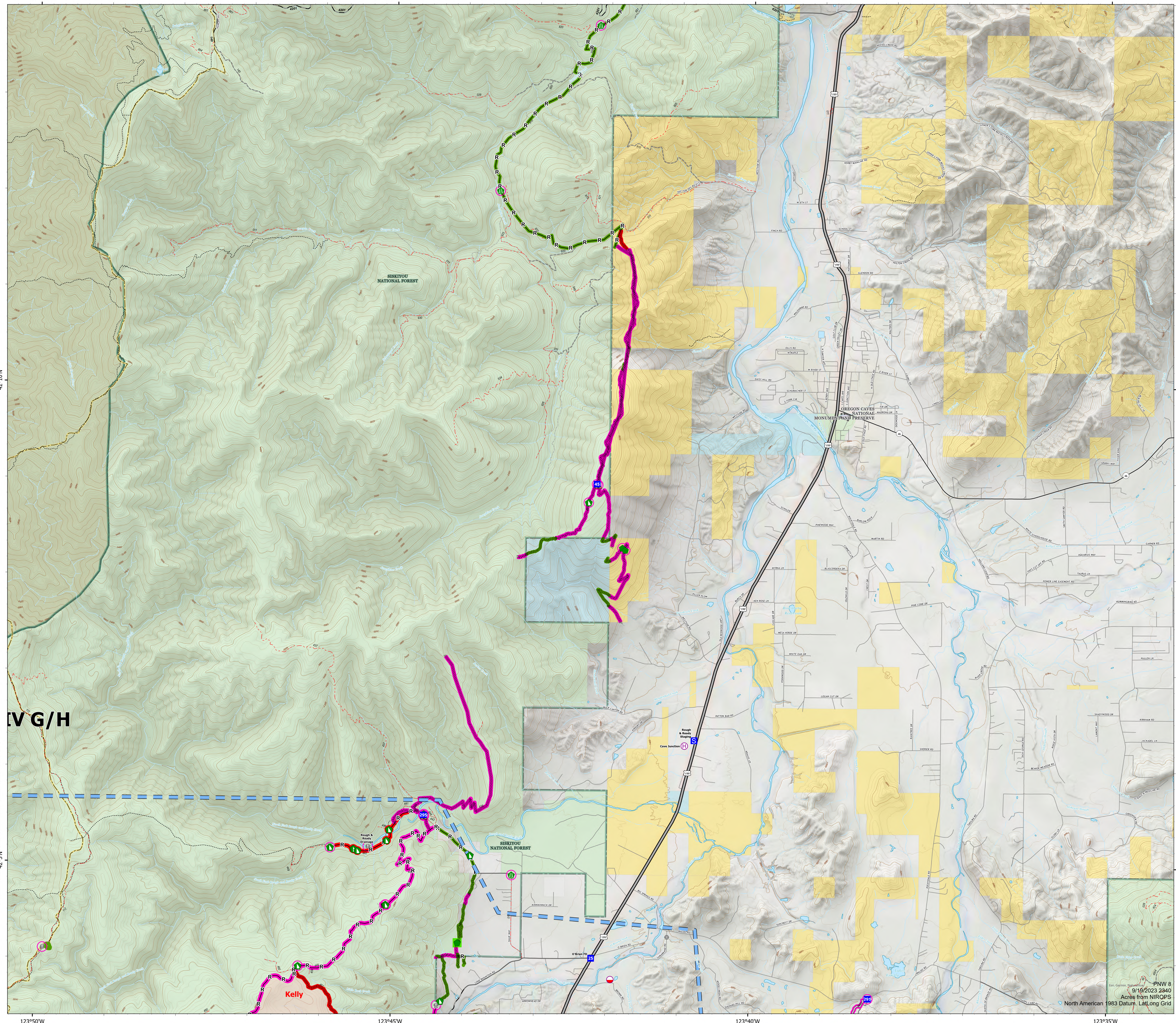
# Suppression Repair Hotel

## Smith River Complex North

CA-SRF-000968  
9/20/2023 24hr  
92,727 acres at 9/19/2023 10:02 PDT



- Contained
- Mobile Retardant Base
- ⊙ Helibase
- ⊙ Drop Point
- ⊙ Staging Area
- ⊙ Value at Risk
- ⊙ Fire Station
- ⊙ Bridge
- ⊙ Road Repair
- ⊙ Repair Point
- ⊙ Dozer Push
- ⊙ Safety Zone
- ⊙ Mobile Retardant Base
- ⊙ Helibase
- ⊙ Drop Point
- ⊙ Staging Area
- ⊙ Value at Risk
- ⊙ Fire Station
- ⊙ Bridge
- ⊙ Road Repair
- ⊙ Repair Point
- ⊙ Dozer Push
- ⊙ Safety Zone
- ⊙ Completed Dozer Line
- ⊙ Completed Road as Line
- ⊙ Access or Improved Road
- ⊙ Temporary Flight Restriction
- In Use - Fire Management
- Repair Needed
- Completed - Inspected
- In Use - Fire Management
- Repair Needed
- No Repair Needed
- Paved Road
- Gravel Road
- Unimproved Roads
- Closed Roads
- Trail
- Forest Service
- National Wilderness Areas
- City, County, Other
- State
- BLM
- ANCSA, Private
- USFS
- USFWS
- BIA, Tribal
- DOE, Other Federal
- DOD
- NPS
- BOR
- No Agency



| Landowner Category | Line Type                         | Sum of Miles |
|--------------------|-----------------------------------|--------------|
| BLM                | Completed Dozer Line              | 6.1          |
| BLM                | Completed Hand Line               | 0.3          |
| BLM                | Completed Road as Line            | 4.7          |
| BLM                | Repair Line                       | 0.3          |
| Private            | Access or Improved Road           | 5            |
| Private            | Completed Dozer Line              | 13           |
| Private            | Completed Fuel Break              | 3.4          |
| Private            | Completed Hand Line               | 2.5          |
| Private            | Completed Mixed Construction Line | 1.1          |
| Private            | Completed Road as Line            | 15           |
| Private            | Repair Line                       | 0.5          |
| State              | Completed Dozer Line              | 1            |
| USFS               | Access or Improved Road           | 11.5         |
| USFS               | Completed Burnout                 | 2            |
| USFS               | Completed Dozer Line              | 47.5         |
| USFS               | Completed Hand Line               | 15.3         |
| USFS               | Completed Mixed Construction Line | 5.1          |
| USFS               | Completed Road as Line            | 89           |
| USFS               | UAS Launch and Recovery Zone      | 3            |

