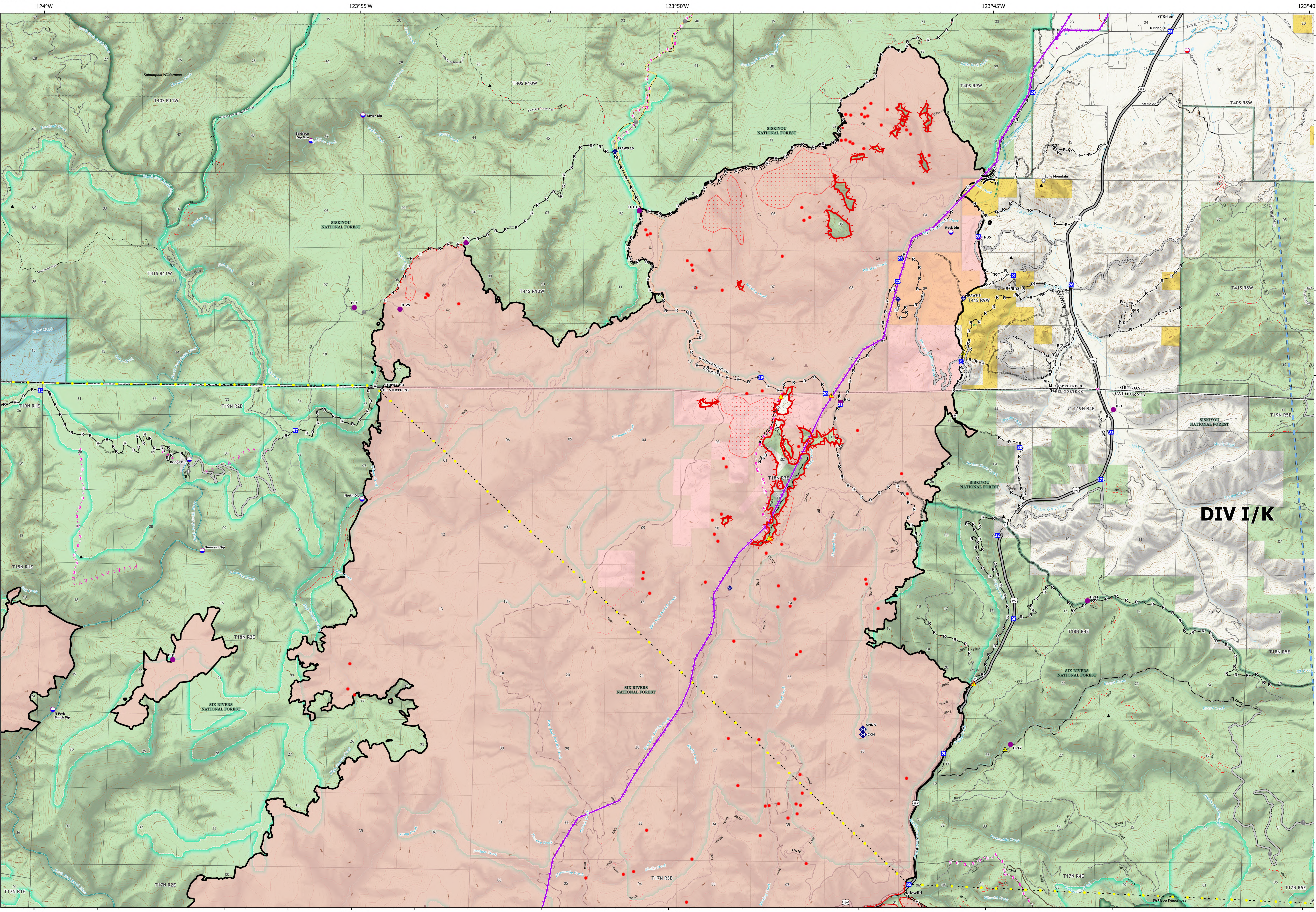


# IR North



**DIV I/K**

**Smith River Complex North**  
**CA-SRF-000968**  
 9/21/2023  
 93,559 acres at 9/20/2023 @ 2036 PDT

- |                         |                     |                      |                                   |                              |                  |        |                           |
|-------------------------|---------------------|----------------------|-----------------------------------|------------------------------|------------------|--------|---------------------------|
| IR Heat Perimeter       | Drop Point          | Internet Access      | Completed Hand Line               | Access or Improved Road      | Paved Road       | 4WD    | Peaks                     |
| IR Scattered Heat       | Closure             | Repeater             | Completed Mixed Construction Line | Highlighted Feature          | Gravel Road      | Tunnel | State or Territory        |
| IR Isolated Heat Source | Staging Area        | Hazard               | Completed Road as Line            | Aerial Hazard                | Dirt Roads       | Trail  | County or Equivalent      |
| Dip Site                | Value at Risk       | Planned Fuel Break   | Planned Hand Line                 | Temporary Flight Restriction | Unimproved Roads | State  | Forest Service            |
| Mobile Retardant Base   | Landmark            | Completed Burnout    | Planned Road as Line              | Fire Edge (Field Collection) | Closed Roads     | BLM    | USFS                      |
| Fire Station            | Fire Station        | Completed Dozer Line | Completed Fuel Break              | Contained                    | Secondary Hwy    | USFS   | National Wilderness Areas |
| Helispot                | Mobile Weather Unit | Completed Fuel Break | Planned Secondary Line            | Uncontained                  | Local Road       |        |                           |
| Division Break          |                     |                      |                                   |                              |                  |        |                           |

North American 1983 Datum. Lat/Long Grid

PNW8  
 9/21/2023 0617  
 Acres from NIROPS

0 0.42 0.85 1.7 2.55 3.4 Miles