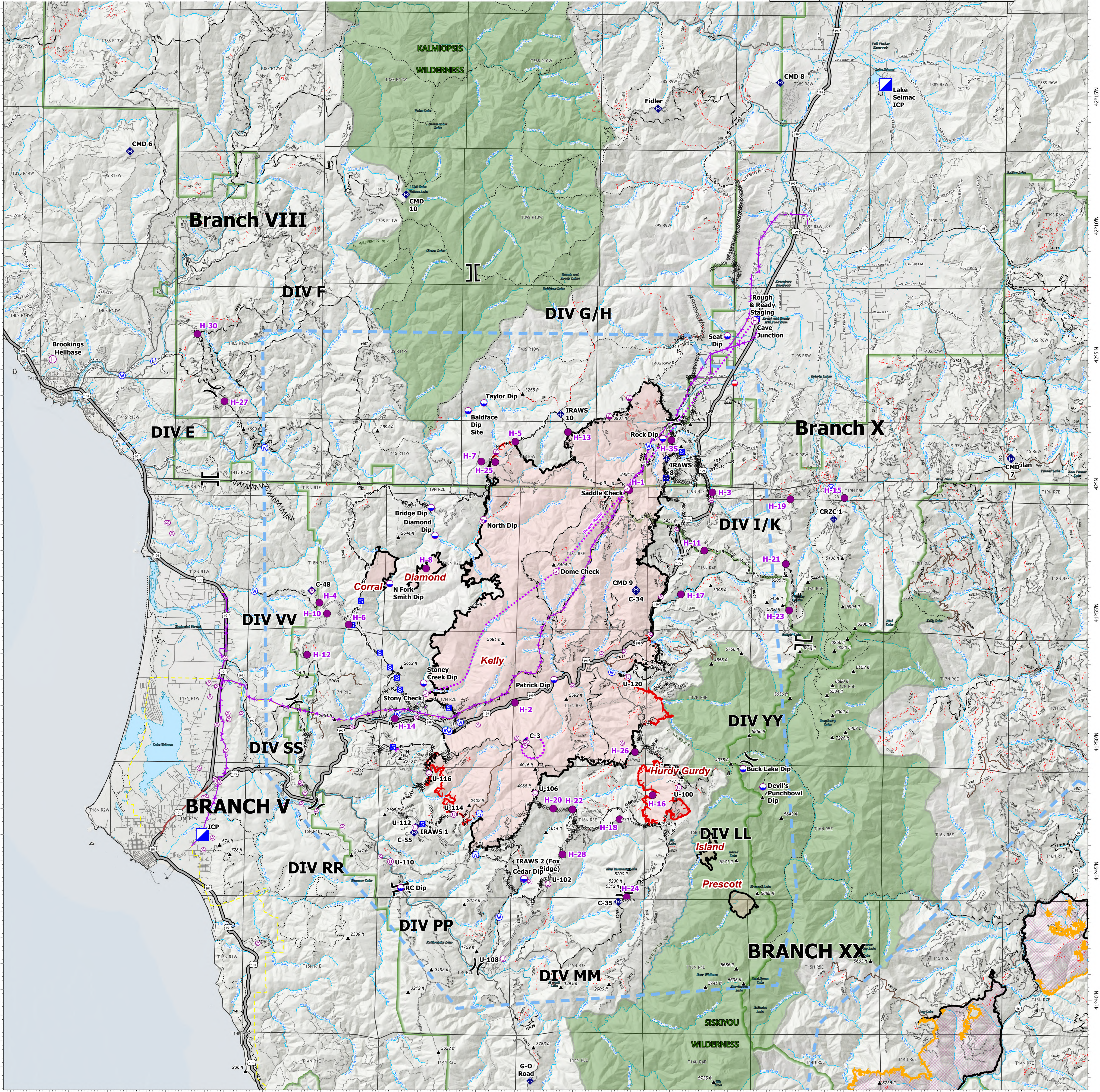


Point Type	Label	Comments	Elevation	Latitude	Longitude	Point Type	Label	Comments	Elevation	Latitude	Longitude	Point Type	Label	Comments	Elevation	Latitude	Longitude	Point Type	Label	Comments	Elevation	Latitude	Longitude					
Aviation Check Point	Dome Check			41° 56.462' N	123° 51.114' W	Helispot	H-12	Large open gravel pit. Type 2&3. HOGE	1920	41° 53.130' N	124° 03.504' W	Helispot	H-4	Good Type 1 & 3 Gravel but not too dusty. HOGE	2120	41° 55.140' N	124° 03.379' W	Repeater	CMD 7	Round Peak KIR4312-FCK-C211 RFR ID: C43	6222	42° 00.954' N	123° 27.535' W					
Aviation Check Point	Saddle Check			41° 59.693' N	123° 47.478' W	Helispot	H-13	Type 2-3 approved. Dust abate.	4000	42° 01.867' N	123° 50.567' W	Helispot	H-5		3291	42° 01.470' N	123° 53.289' W	Repeater	CMD 8	8 Dollar Mt. KIR 4312-FCK-C211 RFR ID: C43	4000	42° 15.475' N	123° 39.686' W					
Aviation Check Point	Stony Check			41° 51.680' N	123° 57.796' W	Helispot	H-14	Type 1 or Type 2	252	41° 56.699' N	123° 59.395' W	Helispot	H-6	Potential dust abatement needed. Type 3 only. HOGE	1612	41° 54.312' N	124° 01.841' W	Repeater	CMD 9	Monkey Ridge KIR4312-FCK-C203 RFR ID: C51	3627	41° 55.789' N	123° 46.959' W					
Dip Site	Baldface Dip Site	Large pool with large bedrock outcropping on SW side of pool (River left)	1449	42° 02.651' N	123° 55.764' W	Helispot	H-15	Approved. Type 2 or Type 3	2200	41° 59.400' N	123° 38.180' W	Helispot	H-7		3310	42° 00.692' N	123° 55.056' W	Repeater	Fidler		4927	42° 14.422' N	123° 46.037' W					
Dip Site	Bridge Dip	Possible Dip Site up stream of bridge	900	41° 58.884' N	123° 57.630' W	Helispot	H-16	ARCH cleared by ARCH SULLIVAN 9/07/2023	3715	41° 47.832' N	123° 46.004' W	Helispot	H-8	Type 2 and 3 approved. Dust abate. Initial improvements needed 6-8 small trees. No other hazards identified. Type 2 or 3. No Dust abatement needed	3000	41° 56.525' N	123° 57.858' W	Repeater	Unimproved Landing Area	U-100	Approved ULA per Helios	4850	41° 48.137' N	123° 44.656' W				
Dip Site	Buck Lake Dip	Approved by READS. Has not been utilized.	4292	41° 48.879' N	123° 41.335' W	Helispot	H-17	Type2/Type3	1501	41° 56.627' N	123° 44.629' W	Mobile Retardant Base		from fire retardant	1400	42° 03.812' N	123° 41.931' W	Unimproved Landing Area	U-102	Needs approved SS. Private land & owner has approved single use	2432	41° 44.355' N	123° 51.568' W					
Dip Site	Cedar Dip			41° 44.550' N	123° 52.600' W	Helispot	H-18	Approved, type 2 helicopter per Helibase.	4685	41° 46.889' N	123° 47.702' W	Mobile Weather Unit	CRZC 1	coords and elev from IMET	3970	41° 58.983' N	123° 36.732' W	Unimproved Landing Area	U-106	Type 3 only. Needs Dust Abatement	4107	41° 47.597' N	123° 52.097' W					
Dip Site	Devil's Punchbowl Dip	READS approved	4760	41° 48.185' N	123° 40.299' W	Helispot	H-19	Type2/Type3	3616	41° 59.338' N	123° 38.994' W	Mobile Weather Unit	G-O Road		3780	41° 36.715' N	123° 52.190' W	Unimproved Landing Area	U-108	On private land & owner has approved single use; approved per Helios (5/11)	4827	41° 41.443' N	123° 53.650' W					
Dip Site	Diamond Dip	Diamond Dip	700	41° 57.811' N	123° 57.412' W	Helispot	H-20	Needs Improvement-DIV WW is aware/ ARCH cleared by ARCH SULLIVAN 9/07/2023	1000	41° 51.360' N	123° 53.178' W	Mobile Weather Unit	IRAWS 1	coords and elev from IMET	4626	42° 02.561' N	124° 00.969' W	Unimproved Landing Area	U-110	Known LZ according to local resident across the street. Can land a type 2 or 3 helicopter. Can be used for medevac site.	453	41° 45.150' N	123° 59.533' W					
Dip Site	N Fork Smith Dip	clutter edit	1200	41° 53.440' N	123° 54.900' W	Helispot	H-21	Type2/Type3 - Must have dust abatement.	4629	41° 56.831' N	123° 39.203' W	Mobile Weather Unit	IRAWS 10	coords and elev from IMET	3448	41° 45.902' N	123° 50.638' W	Unimproved Landing Area	U-112	Approved by HELCO 1/30/9/2.	2676	41° 46.487' N	123° 58.289' W					
Dip Site	North Dip			41° 52.268' N	123° 51.169' W	Helispot	H-22	Approved for Type 2	3000	42° 00.678' N	123° 54.330' W	Repeater	Bolan	for use on the South side	3271	42° 00.992' N	123° 27.555' W	Unimproved Landing Area	U-114	clutter edit	2166	41° 47.000' N	123° 56.286' W					
Dip Site	Patrick Dip	Potential Dip Site	345	41° 44.143' N	123° 58.995' W	Helispot	H-23	Type2/Type3	5480	41° 55.027' N	123° 39.011' W	Repeater	C-3		3708	41° 59.845' N	123° 52.604' W	Unimproved Landing Area	U-116	Approved 5/4 by helicopter	1929	41° 48.588' N	123° 57.584' W					
Dip Site	RC Dip			41° 44.143' N	123° 58.995' W	Helispot	H-24		4982	41° 43.875' N	123° 47.298' W	Repeater	C-34		4231	41° 59.845' N	123° 52.604' W	Unimproved Landing Area	U-120	Approved Type 3 and Type 2. HOGE. This really should be listed as a Helispot but for some reason it is not approved. This needs to be discussed at our OPS AAR. ARCH in review.	1142	41° 52.397' N	123° 47.345' W					
Dip Site	Rock Dip			42° 01.650' N	123° 45.641' W	Helispot	H-25	Approved for Type 2	3000	42° 00.678' N	123° 54.330' W	Repeater	C-35		5310	41° 43.689' N	123° 47.732' W											
Dip Site	Seat Dip			42° 03.550' N	123° 42.329' W	Helispot	H-26		2005	41° 46.499' N	123° 48.939' W	Repeater	C-48	High Divide	2293	41° 55.617' N	124° 00.789' W											
Dip Site	Stoney Creek Dip			41° 52.268' N	123° 51.169' W	Helispot	H-27	Type III Helicopter	1359	42° 02.907' N	124° 08.434' W	Repeater	C-55		2791	41° 46.298' N	123° 58.317' W											
Dip Site	Taylor Dip			42° 02.960' N	123° 54.950' W	Helispot	H-28		3538	41° 59.504' N	123° 50.640' W	Repeater	C-55		4526	42° 11.000' N	123° 59.118' W											
Helibase	Brookings Helibase			42° 04.433' N	124° 17.390' W	Helispot	H-29		1700	41° 59.570' N	124° 43.053' W	Repeater	CMD 5		4526	42° 11.000' N	123° 59.118' W											
Helibase	Cave Junction	HIGE needs dust abatement.		41° 59.630' N	123° 47.298' W	Helispot	H-30	Type 1-2-3 approved. No dust abatement.	1700	41° 59.570' N	124° 43.053' W	Repeater	CMD 6		3438	42° 15.5454' N	124° 13.5172' W											
Helispot	H-10	Good gravel. Type 3 Only. 2-way approach. HOGE		41° 57.323' N	124° 02.973' W	Helispot	H-31	Approved type 2 helicopter	1906	42° 01.599' N	123° 45.210' W																	
Helispot	H-11	Type2/Type3 90x60		41° 57.323' N	123° 43.438' W	Helispot	H-35	Approved type 2 helicopter	1906	42° 01.599' N	123° 45.210' W																	



Smith River Complex North

CA-SRF-000968
9/21/2023

92,914 acres at 9/19/2023 @
2126 PDT



0 0.5 1 2 3 4
Nautical Miles

Datum: North American 1983
PNW Updated: 9/20/2023 2:10