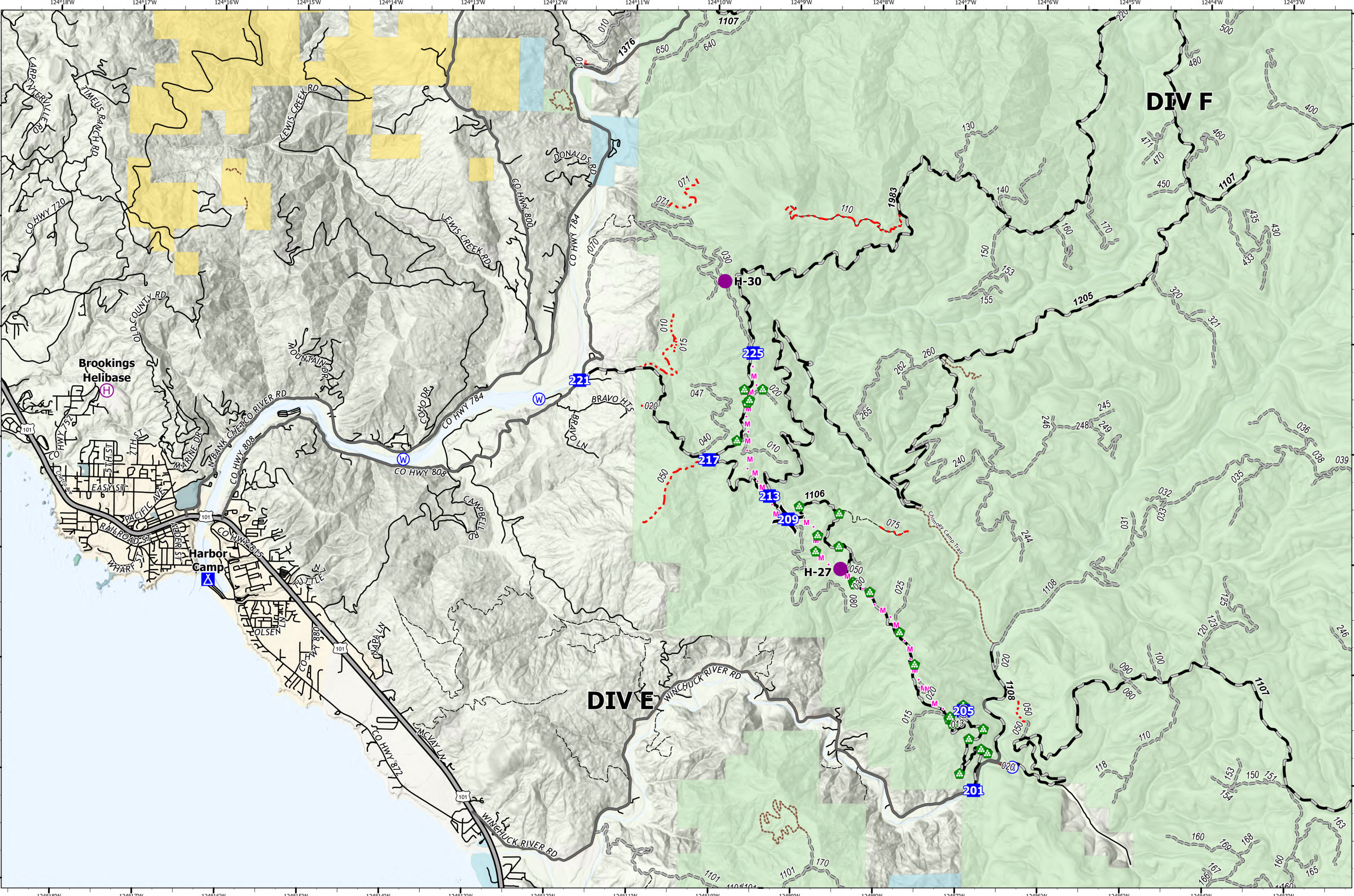


# Transportation - DIV E/F



**Smith River Complex**  
**CA-SRF-000968**  
**9/21/2023**  
*92,914 acres at 9/19/2023 @ 2126 PDT*

- Helispot
- ⊕ Helibase
- ⌋ Division Break
- Drop Point
- ⊠ Camp
- ⊕ Landing or Log Deck
- ⊕ Water Source
- M · M Planned Mixed Construction Line
- USGS Roads**
- Secondary Hwy
- Local Road
- - - 4WD
- Forest Service Roads**
- Paved Road
- Gravel Road
- - - Unimproved Roads
- · - · - Closed Roads
- · - · - Trail
- Jurisdictional Agency**
- City, County, Other
- State
- BLM
- USFS
- USFWS



PNW8  
 9/20/2023 2128  
 Acres from NIPROPS  
 North American 1983 Datum, Lat/Long  
 Grid

