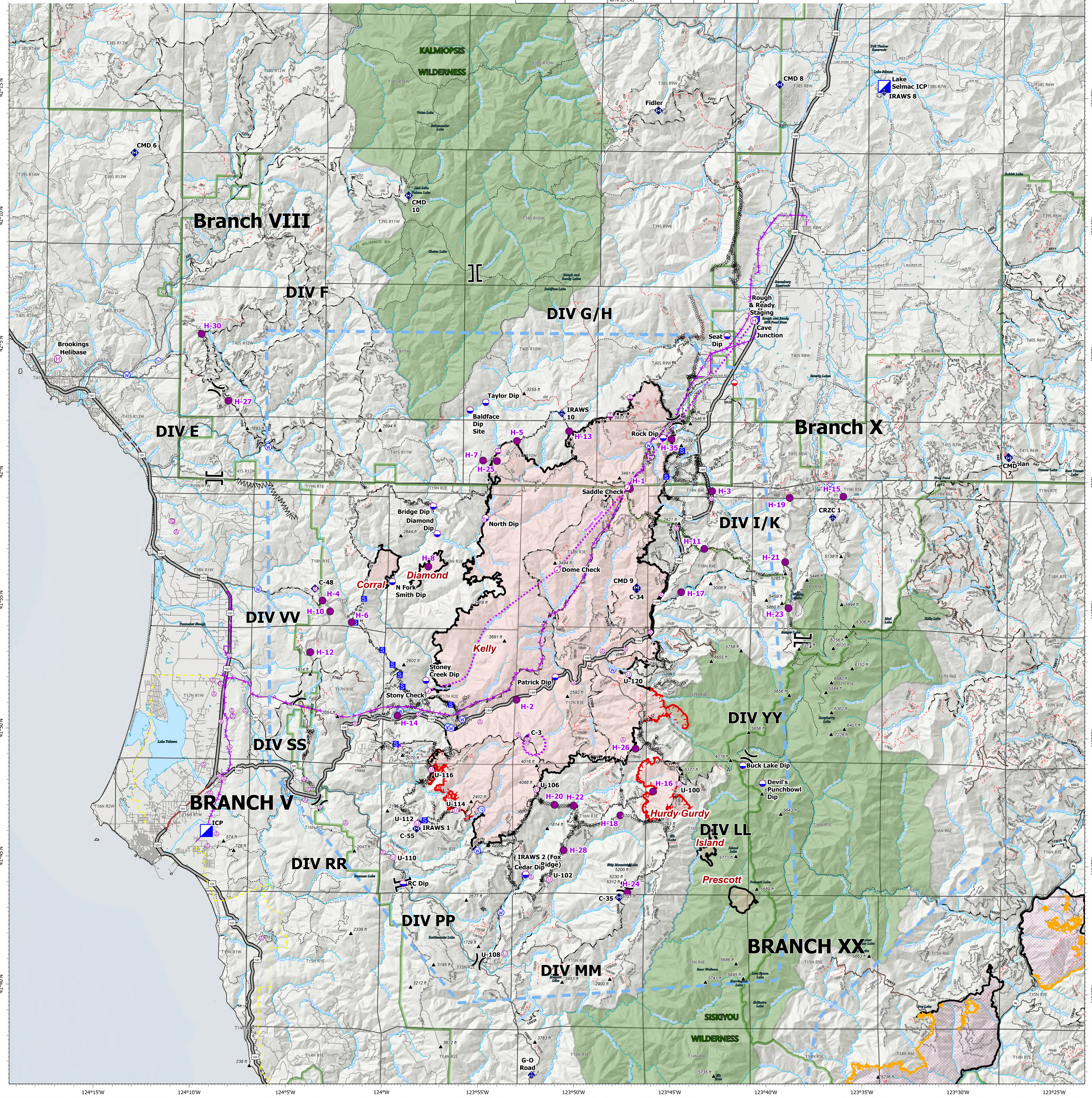


# AIR OPERATIONS NORTH

9/22/2023

| Point Type           | Label                 | Comments  | Elevation | Latitude      | Longitude      | Point Type | Label | Comments   | Elevation | Latitude      | Longitude      | Point Type            | Label               | Comments   | Elevation | Latitude      | Longitude      | Point Type | Label       | Comments                                      | Elevation | Latitude      | Longitude      |  |
|----------------------|-----------------------|---|-----------|---------------|----------------|------------|-------|--|-----------|---------------|----------------|-----------------------|---------------------|--|-----------|---------------|----------------|------------|-------------|---|-----------|---------------|----------------|--|
| Aviation Check Point | Dome Check            |   |           | 41° 56.462' N | 123° 51.114' W | Helispot   | H-12  | Large open gravel pit. Type 2&3. HOGE                                      | 1920      | 41° 53.120' N | 124° 03.944' W | Helispot              | H-4                 | Good Type 1 & 3 Gravel but not too dusty. HOGE   | 2120      | 41° 55.140' N | 123° 03.379' W | Repeater   | CMD 8       | 8 Colter Hex. KR# 4312-FCK-C163 RFRTR ID: C53 | 4900      | 42° 15.475' N | 123° 39.086' W |  |
| Aviation Check Point | Saddle Check          |   |           | 41° 51.680' N | 123° 47.796' W | Helispot   | H-13  | Type 2-3 approved. Dust abate.   | 4000      | 42° 01.867' N | 123° 50.567' W | Helispot              | H-5                 |  | 3291      | 42° 01.470' N | 123° 53.299' W | Repeater   | CMD 9       | Monkey Ridge KR#4312-FCK-C203 RFRTR ID: C53   | 3627      | 42° 14.422' N | 123° 46.959' W |  |
| Dip Site             | Baldface Dip Site     | Large pool with large bedrock outcropping on SW side of pool (River left) | 1449      | 42° 02.651' N | 123° 55.764' W | Helispot   | H-14  | Approved. Type 2 or Type 3   | 252       | 41° 56.699' N | 123° 59.395' W | Helispot              | H-6                 | Potential dust abatement needed. Type 3 only. HOGE   | 1612      | 41° 54.312' N | 124° 01.841' W | Repeater   | Fidler      |   | 4927      | 42° 14.422' N | 123° 46.037' W |  |
| Dip Site             | Bridge Dip            | Possible Dip Site up stream of bridge                                     | 900       | 41° 58.884' N | 123° 57.630' W | Helispot   | H-15  | Approved. Type 2 or Type 3   | 2000      | 41° 59.400' N | 123° 38.180' W | Helispot              | H-7                 | Type 2 and 3 approved. Dust abate. Minimal improvements needed 6-8 small trees. No other hazards identified. Type 2 or 3. No Dust abatement needed | 3310      | 42° 00.692' N | 123° 55.056' W | Repeater   | Stony Creek |   | 3810      | 42° 03.206' N | 123° 47.396' W |  |
| Dip Site             | Buck Lake Dip         | Approved by READS. Has not been utilized.                                 | 4292      | 41° 48.879' N | 123° 41.335' W | Helispot   | H-16  | ARCI cleared by ARCH SULLIVAN 9/07/2023                                    | 3715      | 41° 47.832' N | 123° 46.004' W | Helispot              | H-8                 |  | 3000      | 41° 56.525' N | 123° 57.858' W | Repeater   | Stony Creek |   | 3926      | 42° 02.499' N | 123° 48.429' W |  |
| Dip Site             | Cedar Dip             |   |           | 41° 44.550' N | 123° 52.600' W | Helispot   | H-17  | Type2/Type3  | 1501      | 41° 56.627' N | 123° 44.629' W | Helispot              | H-18                | Approved, type 2 helicopter per Helibase.  | 4685      | 41° 46.889' N | 123° 47.702' W | Repeater   | Stony Creek |   | 427       | 42° 03.065' N | 123° 54.811' W |  |
| Dip Site             | Devil's Punchbowl Dip | READS approved  | 4760      | 41° 48.185' N | 123° 40.299' W | Helispot   | H-18  | Type2/Type3  | 3616      | 41° 59.338' N | 123° 38.994' W | Mobile Retardant Base | CRZC 1              | coords and elev from IMET  | 1400      | 42° 03.812' N | 123° 41.931' W | Repeater   | Stony Creek |   | 4850      | 41° 48.137' N | 123° 44.656' W |  |
| Dip Site             | Diamond Dip           | Diamond Dip   | 700       | 41° 57.811' N | 123° 57.412' W | Helispot   | H-19  | Needs Improvement-DIV VV is aware/ ARCI cleared by ARCH SULLIVAN 9/07/2023 | 1000      | 41° 51.360' N | 123° 53.178' W | Mobile Weather Unit   | G-O Road            |  | 3790      | 41° 58.583' N | 123° 38.732' W | Repeater   | Stony Creek |   | 4107      | 41° 47.907' N | 123° 52.007' W |  |
| Dip Site             | N Fork Smith Dip      | clutter edit  | 1200      | 41° 55.522' N | 123° 59.741' W | Helispot   | H-20  | Approved for Type 2  | 3144      | 41° 47.275' N | 123° 51.144' W | Mobile Weather Unit   | IRAWS 1             | Coon Mtn.  | 4026      | 42° 02.561' N | 123° 50.969' W | Repeater   | Stony Creek |   | 827       | 41° 41.443' N | 123° 53.650' W |  |
| Dip Site             | North Dip             |   |           | 41° 52.440' N | 123° 54.900' W | Helispot   | H-21  | Type2/Type3 - Must have dust abatement.                                    | 4629      | 41° 56.831' N | 123° 39.203' W | Mobile Weather Unit   | IRAWS 10            | coords and elev from IMET  | 4026      | 42° 02.561' N | 123° 50.969' W | Repeater   | Stony Creek |   | 2432      | 41° 44.355' N | 123° 51.368' W |  |
| Dip Site             | Patrick Dip           |   |           | 41° 52.266' N | 123° 51.160' W | Helispot   | H-22  | Type2/Type3  | 1876      | 41° 47.252' N | 123° 50.140' W | Mobile Weather Unit   | IRAWS 2 (Fox Ridge) | coords and elev from IMET  | 3448      | 41° 45.502' N | 123° 50.638' W | Repeater   | Stony Creek |   | 453       | 41° 45.150' N | 123° 59.533' W |  |
| Dip Site             | RC Dip                | Potential Dip Site  | 345       | 41° 44.143' N | 123° 58.995' W | Helispot   | H-23  | Approved for Type 2  | 4982      | 41° 43.875' N | 123° 47.298' W | Repeater              | Bolan               |  | 6221      | 42° 00.992' N | 123° 27.555' W | Repeater   | Stony Creek |   | 2676      | 41° 46.467' N | 123° 58.289' W |  |
| Dip Site             | Rock Dip              |   |           | 42° 01.650' N | 123° 45.641' W | Helispot   | H-24  | Type2/Type3  | 5480      | 41° 55.027' N | 123° 50.140' W | Repeater              | C-3                 |  | 3708      | 41° 48.945' N | 123° 52.604' W | Repeater   | Stony Creek |   | 2166      | 41° 47.006' N | 123° 56.286' W |  |
| Dip Site             | Seat Dip              |   |           | 42° 03.650' N | 123° 42.320' W | Helispot   | H-25  | Approved for Type 2  | 3000      | 42° 00.678' N | 123° 54.330' W | Repeater              | C-34                | For use on the South side  | 3696      | 41° 55.726' N | 123° 46.958' W | Repeater   | Stony Creek |   | 1929      | 41° 48.598' N | 123° 57.584' W |  |
| Dip Site             | Stony Creek Dip       | clutter edit  | 1457      | 42° 03.650' N | 123° 42.320' W | Helispot   | H-26  | Type III Helicopter  | 2005      | 41° 46.492' N | 123° 48.539' W | Repeater              | C-35                |  | 5310      | 41° 43.686' N | 123° 47.732' W | Repeater   | Stony Creek |   | 1142      | 41° 52.397' N | 123° 47.345' W |  |
| Dip Site             | Taylor Dip            |   |           | 41° 52.266' N | 123° 51.160' W | Helispot   | H-27  | Approved for Type 2  | 1359      | 42° 02.907' N | 124° 08.434' W | Repeater              | C-48                | High Divide  | 2293      | 41° 55.617' N | 124° 03.787' W | Repeater   | Stony Creek |   |           |               |                |  |
| Helibase             | Brookings Helibase    |   | 466       | 42° 04.433' N | 124° 17.390' W | Helispot   | H-28  | Type 1-2-3 approved. No dust abatement.                                    | 1700      | 41° 59.571' N | 124° 03.053' W | Repeater              | CMD 10              |  | 4526      | 42° 11.006' N | 123° 59.116' W | Repeater   | Stony Creek |   |           |               |                |  |
| Helibase             | Cave Junction         |   | 1378      | 42° 06.250' N | 123° 40.917' W | Helispot   | H-3   | Type 1-2-3 approved. No dust abatement.                                    | 1700      | 41° 59.571' N | 124° 03.053' W | Repeater              | CMD 6               |  | 3438      | 42° 15.545' N | 124° 13.512' W | Repeater   | Stony Creek |   |           |               |                |  |
| Helispot             | H-1                   | HIGE needs dust abatement.  | 3500      | 41° 59.630' N | 123° 41.390' W | Helispot   | H-30  | Approved type 2 helicopter   | 1906      | 42° 01.599' N | 123° 45.210' W | Repeater              | CMD 7               | Boland Rock KR#4312-FCK-C221 RFRTR ID: C53   | 6222      | 42° 00.954' N | 123° 27.535' W | Repeater   | Stony Creek |   |           |               |                |  |
| Helispot             | H-10                  | Good gravel. Type 3 Only. 2-way approach. HOGE                            | 2400      | 41° 54.727' N | 124° 02.973' W | Helispot   | H-35  | Approved type 2 helicopter   | 1906      | 42° 01.599' N | 123° 45.210' W | Repeater              | CMD 7               | Boland Rock KR#4312-FCK-C221 RFRTR ID: C53   | 6222      | 42° 00.954' N | 123° 27.535' W | Repeater   | Stony Creek |   |           |               |                |  |
| Helispot             | H-11                  | Type2/Type3/SHADE   | 2905      | 41° 57.323' N | 123° 43.438' W | Helispot   | H-35  | Approved type 2 helicopter   | 1906      | 42° 01.599' N | 123° 45.210' W | Repeater              | CMD 7               | Boland Rock KR#4312-FCK-C221 RFRTR ID: C53   | 6222      | 42° 00.954' N | 123° 27.535' W | Repeater   | Stony Creek |   |           |               |                |  |



## Smith River Complex North

CA-SRF-000968  
9/22/2023  
93,559 acres at 9/20/2023 @ 2036 PDT

|  |  |  |
|--|--|--|
| <ul style="list-style-type: none"> <li>Aviation Check Point</li> <li>Helibase</li> <li>Mobile Retardant Base</li> <li>Helispot</li> <li>Dip Site</li> <li>Sling Site</li> <li>Unimproved Landing Area</li> <li>Aerial Hazard</li> <li>Branch Hazard</li> <li>Division Break</li> </ul> | <ul style="list-style-type: none"> <li>Incident Command Post</li> <li>Staging Area</li> <li>Mobile Weather Unit</li> <li>Water Source</li> <li>Contained</li> <li>Uncontained</li> <li>Contained (OTHER)</li> <li>Completed Burnout</li> <li>Completed Dozer Line</li> <li>Completed Fuel Break</li> <li>Completed Hand Line</li> <li>Completed Mixed Construction Line</li> <li>Completed Road as Line</li> <li>Access or Improved Road</li> <li>Aerial Hazard</li> <li>Aviation Route</li> <li>UAS Launch and Recovery Zone</li> </ul> | <ul style="list-style-type: none"> <li>Temporary Flight Restriction</li> <li>Wildfire Daily Perimeter (OTHER)</li> <li>Federal Wilderness Boundary</li> <li>National Forest Boundary</li> <li>Transmission Lines</li> <li>Paved Road</li> <li>Gravel Road</li> <li>Dirt Roads</li> <li>Unimproved Roads</li> <li>Closed Roads</li> <li>Expressway</li> <li>Secondary Hwy</li> <li>Local Connector</li> <li>Local Road</li> <li>Ramp</li> <li>4WD</li> <li>Tunnel</li> <li>Trail</li> </ul> |
|--|--|--|



Datum: North American 1983  
PNW Updated: 9/21/2023 2:43