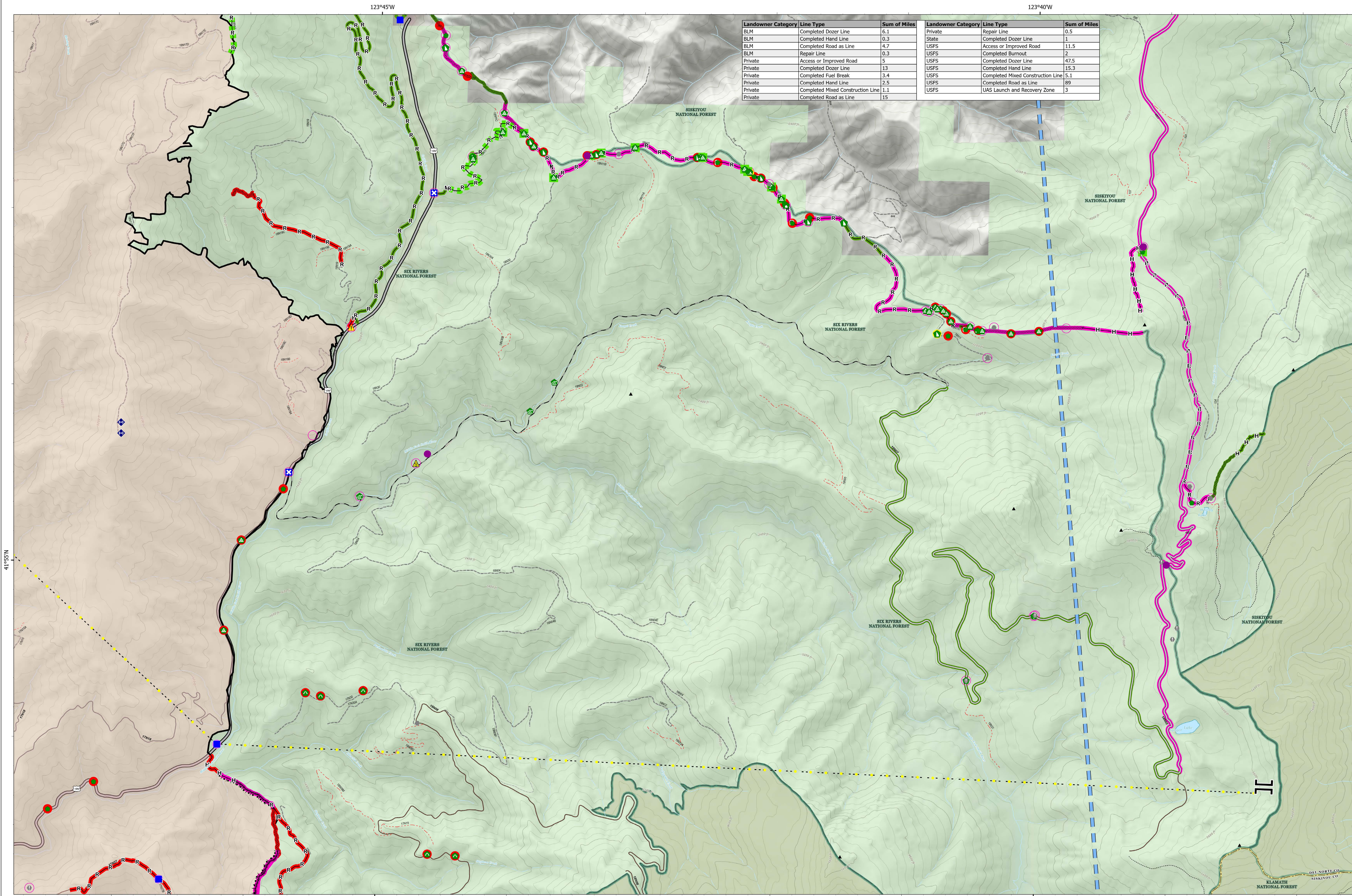



Suppression Repair Div K



Landowner Category	Line Type	Sum of Miles	Landowner Category	Line Type	Sum of Miles
BLM	Completed Dozer Line	6.1	Private	Repair Line	0.5
BLM	Completed Hand Line	0.3	State	Completed Dozer Line	1
BLM	Completed Road as Line	4.7	USFS	Access or Improved Road	11.5
BLM	Repair Line	0.3	USFS	Completed Burnout	2
Private	Access or Improved Road	5	USFS	Completed Dozer Line	47.5
Private	Completed Dozer Line	13	USFS	Completed Hand Line	15.3
Private	Completed Fuel Break	3.4	USFS	Completed Mixed Construction Line	5.1
Private	Completed Hand Line	2.5	USFS	Completed Road as Line	89
Private	Completed Mixed Construction Line	1.1	USFS	UAS Launch and Recovery Zone	3
Private	Completed Road as Line	15			

Smith River Complex North
CA-SRF-000968
9/22/2023
 93,559 acres at 9/20/2023 @ 2036 PDT
 9/22/2023 0019
 Acres from NIROPS
 North American 1983 Datum, Lat/Long Grid

- ▲ Peaks
- Helispot
- II Branch Break
- Drop Point
- ⊠ Closure
- Value at Risk
- Other
- Water
- Development or Draft Site
- Resource Location
- Repair Point
- Landing or Log Deck
- Dozer Push
- Culvert
- Repeater
- Safety Zone
- ▲ Hazard
- In Use - Fire Management
- Needs Assessment
- Repair Needed
- In Progress
- Completed - Ready for Inspection
- Completed - Inspected
- No Repair Needed
- Other - See Comments
- L- Completed Burnout
- - - Completed Dozer Line
- H- Completed Hand Line
- M- Completed Mixed Construction Line
- R- Completed Road as Line
- - - Access or Improved Road
- - - Highlighted Feature
- - - Temporary Flight Restriction
- - - In Use - Fire Management
- - - Needs Assessment
- - - Repair Needed
- - - In Progress
- - - Completed - Ready for Inspection
- - - Completed - Inspected
- - - No Repair Needed
- - - Other - See Comments
- - - Contained
- - - Uncontained
- - - Trail
- - - State or Territory
- - - Forest Service
- - - National Wilderness Areas
- - - City, County, Other
- - - State
- - - BLM
- - - ANCSA/Private
- - - USFS
- - - USFWS
- - - BIA, Tribal
- - - DOE, Other Federal
- - - DOD
- - - NPS
- - - BOR
- - - No Agency



0 0.13 0.25 0.5 0.75 1 Miles

