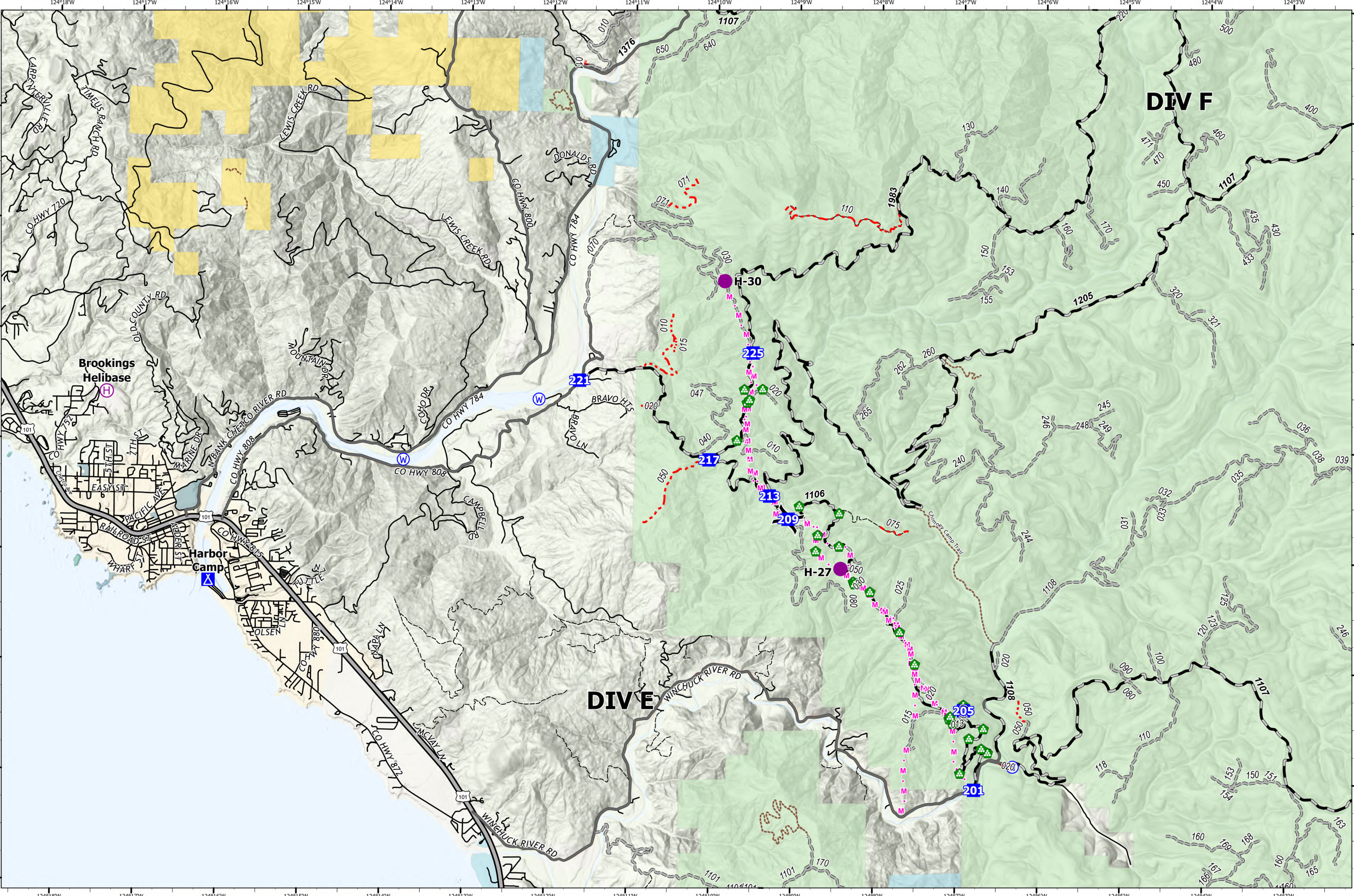


Transportation - DIV E/F



Smith River Complex
CA-SRF-000968
9/22/2023
93,559 acres at 9/20/2023 @ 2036 PDT

- Helispot
- ⊕ Helibase
- ⌋ Division Break
- Drop Point
- ⊠ Camp
- ⊕ Landing or Log Deck
- ⊕ Water Source
- · - Planned Mixed Construction Line
- USGS Roads**
- Secondary Hwy
- Local Road
- 4WD
- Forest Service Roads**
- Paved Road
- Gravel Road
- Unimproved Roads
- Closed Roads
- Trail
- Jurisdictional Agency**
- City, County, Other
- State
- BLM
- USFS
- USFWS



PNW8
 9/21/2023 2106
 Acres from NIPOPS
 North American 1983 Datum, Lat/Long
 Grid

