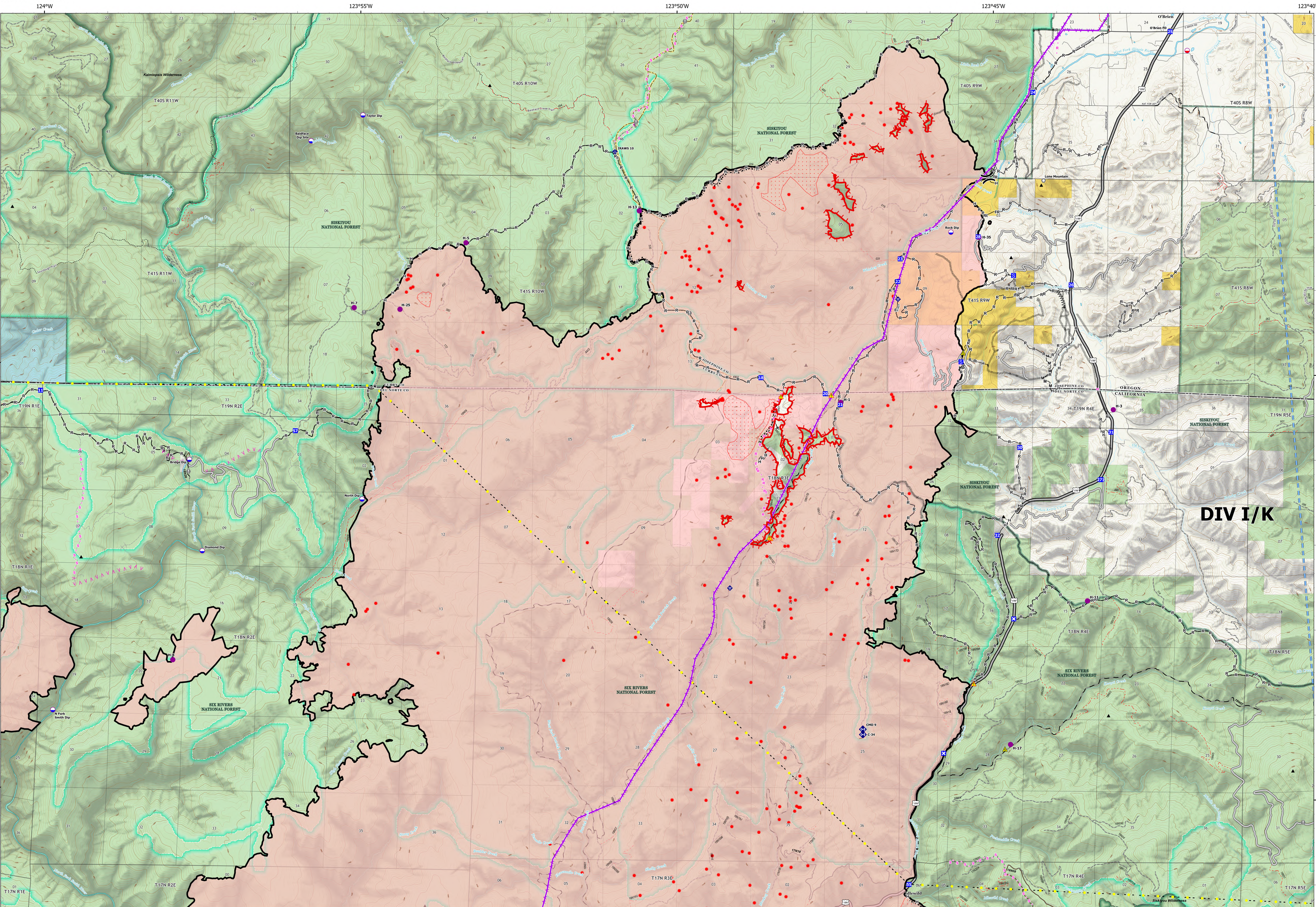


# IR North



## DIV I/K

### Smith River Complex North CA-SRF-000968

9/23/2023  
94,508 acres at 9/22/2023 @ 2004 PDT

- |                         |                     |                      |                                   |                              |                  |                           |                      |
|-------------------------|---------------------|----------------------|-----------------------------------|------------------------------|------------------|---------------------------|----------------------|
| IR Heat Perimeter       | Drop Point          | Internet Access      | Completed Hand Line               | Access or Improved Road      | Gravel Road      | Tunnel                    | State or Territory   |
| IR Scattered Heat       | Closure             | Repeater             | Completed Mixed Construction Line | Highlighted Feature          | Dirt Roads       | Trail                     | County or Equivalent |
| IR Isolated Heat Source | Staging Area        | Safety Zone          | Completed Road as Line            | Aerial Hazard                | Unimproved Roads | State                     | Forest Service       |
| Dip Site                | Value at Risk       | Hazard               | Planned Fuel Break                | Temporary Flight Restriction | Closed Roads     | BLM                       |                      |
| Mobile Retardant Base   | Landmark            | Completed Burnout    | Planned Hand Line                 | Fire Edge (Field Collection) | Secondary Hwy    | USFS                      |                      |
| Fire Station            | Helispot            | Completed Dozer Line | Planned Road as Line              | Contained                    | Local Road       | National Wilderness Areas |                      |
| Division Break          | Mobile Weather Unit | Completed Fuel Break | Planned Secondary Line            | Paved Road                   | 4WD              | Peaks                     |                      |

0 0.42 0.85 1.7 2.55 3.4 Miles

PNW8  
9/23/2023 0605  
Acres from NIROPS  
North American 1983 Datum. LatLong Grid