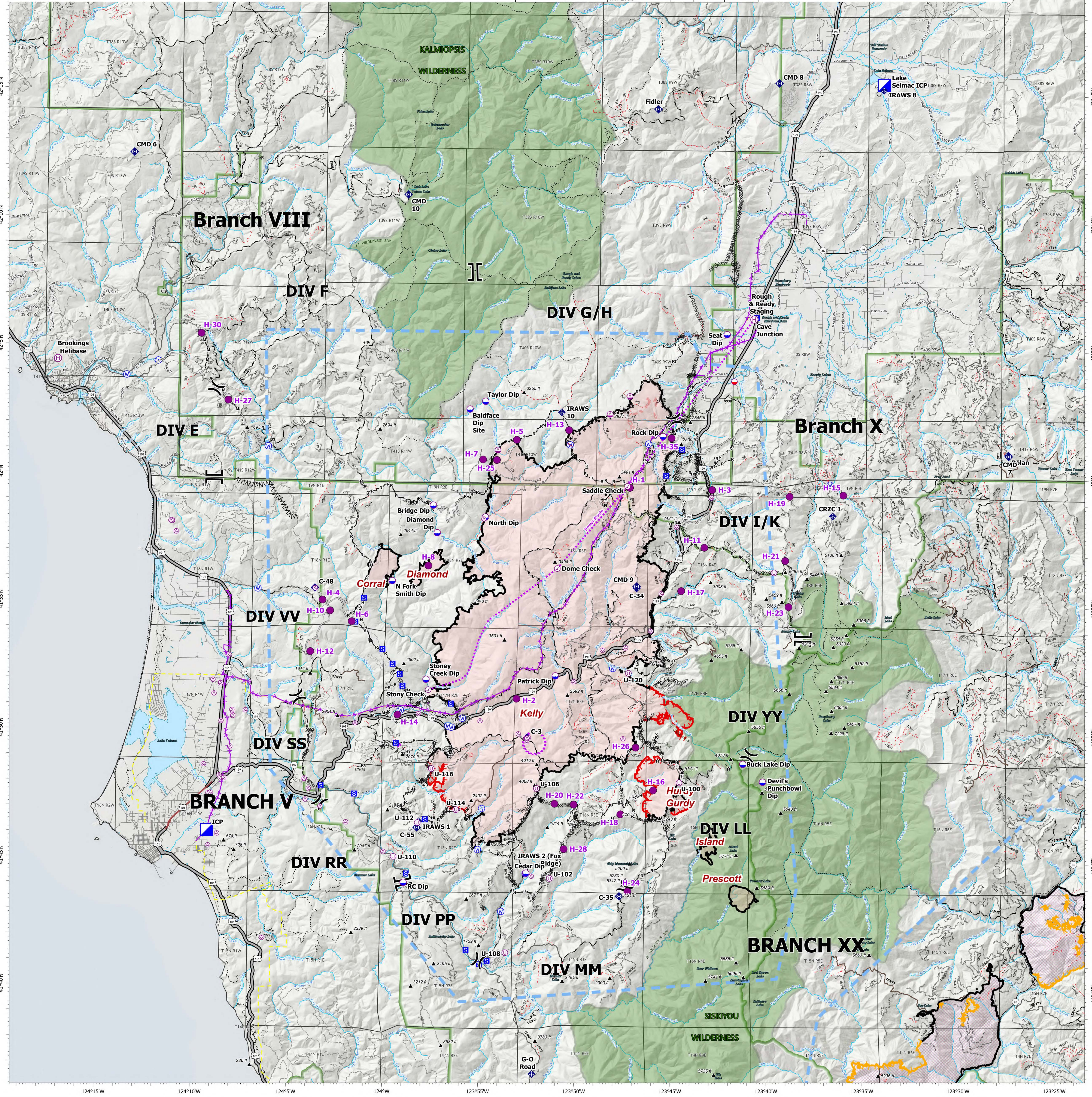


Point Type	Label	Comments	Elevation	Latitude	Longitude	Point Type	Label	Comments	Elevation	Latitude	Longitude	Point Type	Label	Comments	Elevation	Latitude	Longitude	
Aviation Check Point	Dome Check			41° 56.462' N	123° 51.114' W	Helispot	H-12	Large open gravel pit. Type 2&3. HOGE	1920	41° 53.120' N	124° 03.944' W	Helispot	H-4	Good Type 1 & 3 gravel but not too dusty. HOGE	2120	41° 55.140' N	123° 03.379' W	
Aviation Check Point	Saddle Check			41° 59.693' N	123° 47.476' W	Helispot	H-13	Type 2-3 approved. Dust abate.	4000	42° 01.867' N	123° 50.567' W	Helispot	H-5		3291	42° 01.470' N	123° 53.299' W	
Aviation Check Point	Stony Check			41° 51.680' N	123° 57.796' W	Helispot	H-14	Type 1 or Type 2	252	41° 56.699' N	123° 59.395' W	Helispot	H-6	Potential dust abatement needed. Type 3 only. HOGE	1612	41° 54.312' N	124° 01.841' W	
Dip Site	Baldface Dip Site	Large pool with large bedrock outcropping on SW side of pool (River left)	1449	42° 02.651' N	123° 55.764' W	Helispot	H-15	Approved. Type 2 or Type 3	2000	41° 59.400' N	123° 36.180' W	Helispot	H-7		3310	42° 00.692' N	123° 55.056' W	
Dip Site	Bridge Dip	Possible Dip Site up stream of bridge	900	41° 58.884' N	123° 57.630' W	Helispot	H-16	ARCH cleared by ARCH SULLIVAN 9/07/2023	3715	41° 47.822' N	123° 46.004' W	Helispot	H-8	Type 2 and 3 approved. Dust abate. Minimal improvements needed 6-8 small trees. No other hazards identified. Type 2 or 3. No Dust abatement needed	3000	41° 56.525' N	123° 57.858' W	
Dip Site	Buck Lake Dip	Approved by READS. Has not been utilized.	4292	41° 48.879' N	123° 41.335' W	Helispot	H-17	Type2/Type3	1501	41° 55.627' N	123° 44.629' W	Mobile Retardant Base	CRZC 1	coords and elev from IMET	1400	42° 03.812' N	123° 41.931' W	
Dip Site	Cedar Dip			41° 44.550' N	123° 52.600' W	Helispot	H-18	Approved. type 2 helicopter per Helibase.	4685	41° 46.889' N	123° 47.702' W	Mobile Weather Unit	G-O Road	3790	41° 58.583' N	123° 36.732' W		
Dip Site	Devil's Punchbowl Dip	READS approved	4760	41° 48.185' N	123° 40.299' W	Helispot	H-19	Type2/Type3	3616	41° 59.338' N	123° 38.994' W	Mobile Weather Unit	IRAWS 1	Coon Mtn.	41° 46.530' N	123° 58.218' W		
Dip Site	Diamond Dip	Diamond Dip	700	41° 57.811' N	123° 57.412' W	Helispot	H-20	Needs Improvement-DIV VV is aware/ ARCH cleared by ARCH SULLIVAN 9/07/2023	1000	41° 51.360' N	123° 53.176' W	Mobile Weather Unit	IRAWS 10	coords and elev from IMET	4026	42° 02.561' N	123° 50.969' W	
Dip Site	N Fork Smith Dip	clutter edit	1200	41° 55.522' N	123° 59.741' W	Helispot	H-21	Type2/Type3 - Must have dust abatement.	4629	41° 56.831' N	123° 39.203' W	Mobile Weather Unit	IRAWS 2 (Fox Ridge)	coords and elev from IMET	3448	41° 45.502' N	123° 50.638' W	
Dip Site	North Dip			41° 58.440' N	123° 54.900' W	Helispot	H-22	Type2/Type3	5480	41° 47.275' N	123° 51.144' W	Mobile Weather Unit	IRAWS 6	coords and elev from IMET; functional but burned over	3096	42° 15.218' N	123° 34.182' W	
Dip Site	Patrick Dip			41° 52.266' N	123° 51.160' W	Helispot	H-23		4962	41° 43.875' N	123° 47.298' W	Repeater	Bolan		6221	42° 00.992' N	123° 27.555' W	
Dip Site	RC Dip	Potential Dip Site	345	41° 44.143' N	123° 58.995' W	Helispot	H-24	Approved for Type 2	3000	42° 00.678' N	123° 54.330' W	Repeater	C-3		3708	41° 48.945' N	123° 52.604' W	
Dip Site	Rock Dip			42° 01.650' N	123° 45.641' W	Helispot	H-25	Type2/Type3	5480	41° 55.027' N	123° 39.011' W	Repeater	C-34	For use on the South side	3696	41° 53.726' N	123° 56.958' W	
Dip Site	Seat Dip			42° 03.550' N	123° 42.320' W	Helispot	H-26		2805	41° 46.492' N	123° 46.539' W	Repeater	C-35		5310	41° 43.686' N	123° 47.732' W	
Dip Site	Stony Creek Dip	clutter edit	1457	41° 52.080' N	123° 57.910' W	Helispot	H-27	Type III Helicopter	1359	42° 05.907' N	124° 08.434' W	Repeater	C-48	High Divide	2293	41° 55.617' N	124° 03.789' W	
Dip Site	Taylor Dip			41° 52.266' N	123° 51.160' W	Helispot	H-28		3538	41° 46.492' N	123° 46.539' W	Repeater	C-55		4526	42° 11.006' N	123° 59.116' W	
Helibase	Brookings Helibase			42° 04.433' N	124° 12.390' W	Helispot	H-30	Type 1-2-3 approved. No dust abatement.	1700	41° 59.571' N	124° 43.053' W	Repeater	CMD 6		3438	42° 15.545' N	124° 13.517' W	
Helibase	Cave Junction			42° 06.250' N	123° 40.917' W	Helispot	H-33	Approved type 2 helicopter	1906	42° 05.599' N	123° 45.210' W	Repeater	CMD 7	Boland Peak KR#4312-FCK-C21 RPT# ID: C33	6222	42° 00.954' N	123° 27.535' W	
Helispot	H-10	Good gravel. Type 3 Only. 2-way approach. HOGE	2400	41° 54.727' N	124° 02.973' W	Helispot	H-30						Repeater	CMD 8				
Helispot	H-11	Type2/Type3/9040	2905	41° 57.323' N	123° 43.438' W	Helispot	H-35						Repeater	CMD 9	8 Collier Mtn. KR# 4312-FCK-C163 RPT# ID: C33	4900	42° 15.475' N	123° 39.086' W
													Repeater	Fidler	Monkey Ridge KR#4312-FCK-C203 RPT# ID: C33	3627	42° 14.422' N	123° 46.959' W
													Sling Site			3810	42° 03.286' N	123° 47.396' W
													Sling Site			3926	42° 02.499' N	123° 48.429' W
													Sling Site			423	42° 03.065' N	123° 54.811' W
													Unimproved Landing Area	U-100	Approved ULA per Helico.	4850	41° 48.137' N	123° 39.783' W
													Unimproved Landing Area	U-102	Needs approved SG. Private land & owner has approved single use	2432	41° 44.355' N	123° 51.368' W
													Unimproved Landing Area	U-106	Type 3 only. Needs Dust Abatement	4107	41° 47.907' N	123° 52.097' W
													Unimproved Landing Area	U-108	On private land & owner has approved single use; approved per RCZC (SITL)	827	41° 41.443' N	123° 53.650' W
													Unimproved Landing Area	U-110	Known IZ crossing to local resident across the street. Can land a type 1 or 3 helicopter. Can be used for medevac site.	453	41° 45.150' N	123° 59.533' W
													Unimproved Landing Area	U-112	Approved by HCO 1530 9/2.	2676	41° 46.487' N	123° 58.289' W
													Unimproved Landing Area	U-114	clutter edit.	2106	41° 47.006' N	123° 56.286' W
													Unimproved Landing Area	U-116	Approved 9/4 by helicopter	1929	41° 48.986' N	123° 57.984' W
													Unimproved Landing Area	U-120	Approved Type 3 and Type 2. HOGE. This really should be listed as a helispot but for some reason its listed as unimproved. This needs to be discussed at our GPS AAR. ARCH in review.	1142	41° 52.397' N	123° 47.345' W

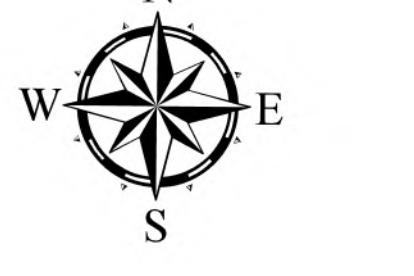


Smith River Complex North

CA-SRF-000968
9/23/2023

94,168 acres at 9/21/2023 @ 2106 PDT

<ul style="list-style-type: none"> Aviation Check Point Helibase Mobile Retardant Base Helispot Dip Site Sling Site Unimproved Landing Area Aerial Hazard Branch Break Division Break 	<ul style="list-style-type: none"> Incident Command Post Staging Area Repeater Mobile Weather Unit Restricted Water Source Water Source Contained Uncontained Contained (OTHER) Uncontained (OTHER) 	<ul style="list-style-type: none"> Completed Burnout Completed Dozer Line Completed Fuel Break Completed Hand Line Completed Mixed Construction Line Completed Road as Line Access or Improved Road Aerial Hazard Aviation Route UAS Launch and Recovery Zone 	<ul style="list-style-type: none"> Temporary Flight Restriction Wildfire Daily Perimeter (OTHER) Federal Wilderness Boundary National Forest Boundary Transmission Lines Paved Road Gravel Road Dirt Roads Unimproved Roads Closed Roads Expressway Secondary Hwy Local Connector Local Road Ramp 4WD Tunnel Trail
---	---	---	--



Datum: North American 1983
PNW Updated: 9/22/2023 2212