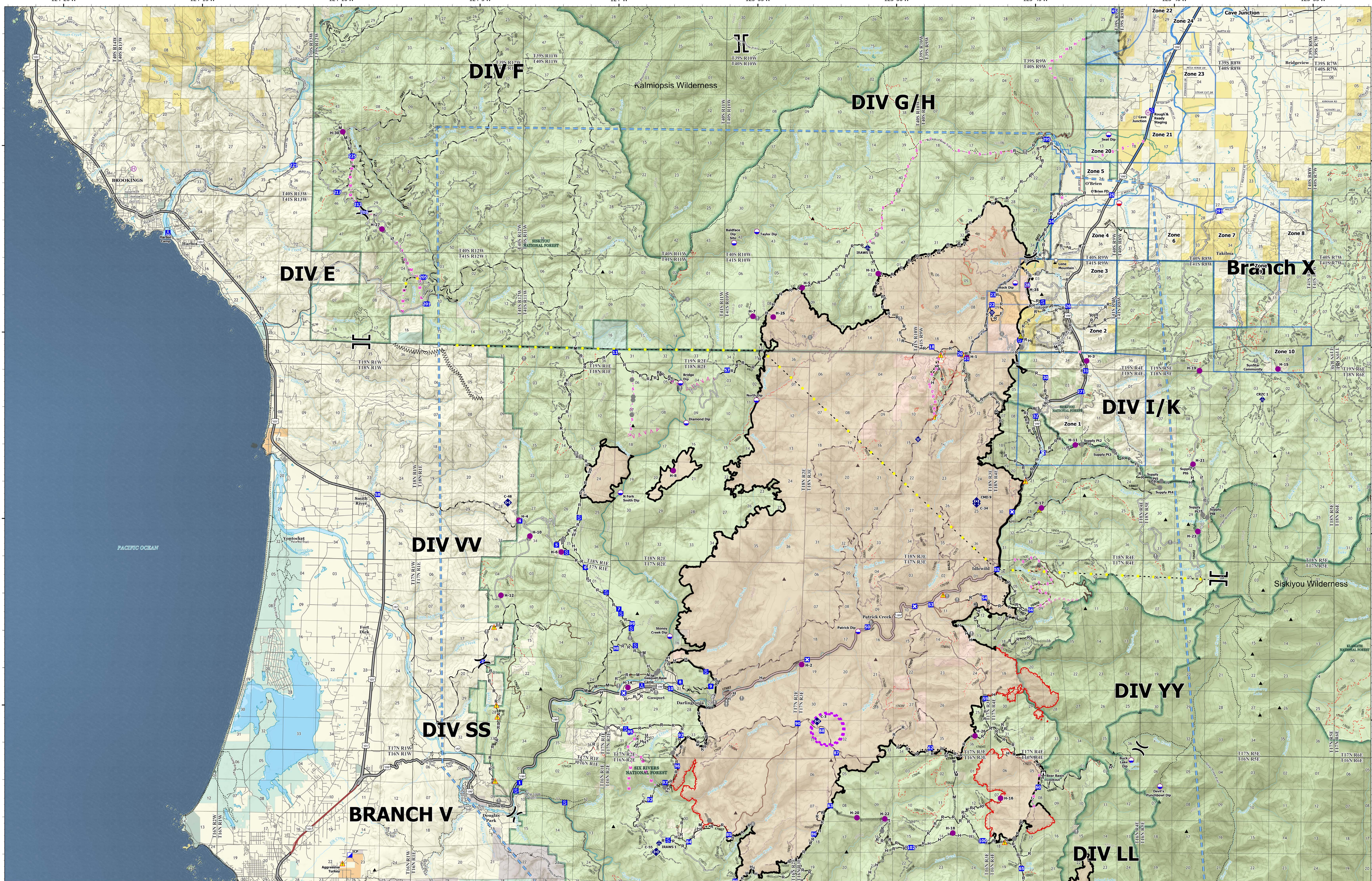


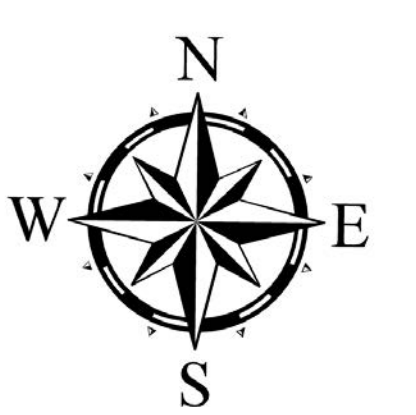
Operations



**Smith River
Complex North
CA-SRF-000968
9/23/2023**

94,168 acres at 9/21/2023 @ 2106 PDT
9/22/2023 2224
Acres from NIROPS
North American 1983 Datum, Lat/Long Grid

- Dip Site
- Mobile Retardant Base
- Helispot
- Helibase
- ✕ Division Break
- ✕ Branch Break
- Incident Command Post
- Drop Zone
- Closure
- Camp
- Staging Area
- ▲ Lookout
- ▲ Value at Risk
- Other
- Landmark
- Fire Station
- Bridge
- Mobile Weather Unit
- Internet Access
- Repeater
- ▲ Safety Zone
- ▲ Hazard
- ▲ Peak
- Completed Burnout
- Completed Dozer Line
- Completed Fuel Break
- Completed Hand Line
- Completed Mixed Construction Line
- Completed Road as Line
- Planned Dozer Line
- Planned Fuel Break
- Planned Hand Line
- Planned Mixed Construction Line
- Planned Road as Line
- Planned Secondary Line
- Access or Improved Road
- Highlighted Feature
- UIC Launch and Recovery Zone
- Temporary Flight Restriction
- Confined
- Unincorporated
- Paved Road
- Gravel Road
- Dirt Roads
- Unimproved Roads
- Closed Roads
- Expressway
- Secondary Hwy
- Local Connector
- Local Road
- Ramp
- RWD
- Tunnel
- Structure Zones
- City, County, Other
- State
- BLM
- ANCSA/Private
- USFS
- USFWS
- BIA, Tribal
- BPS
- National Wilderness Areas
- Forest Service



0 0.5 1 2 3 4 Miles
Contours are 200 feet