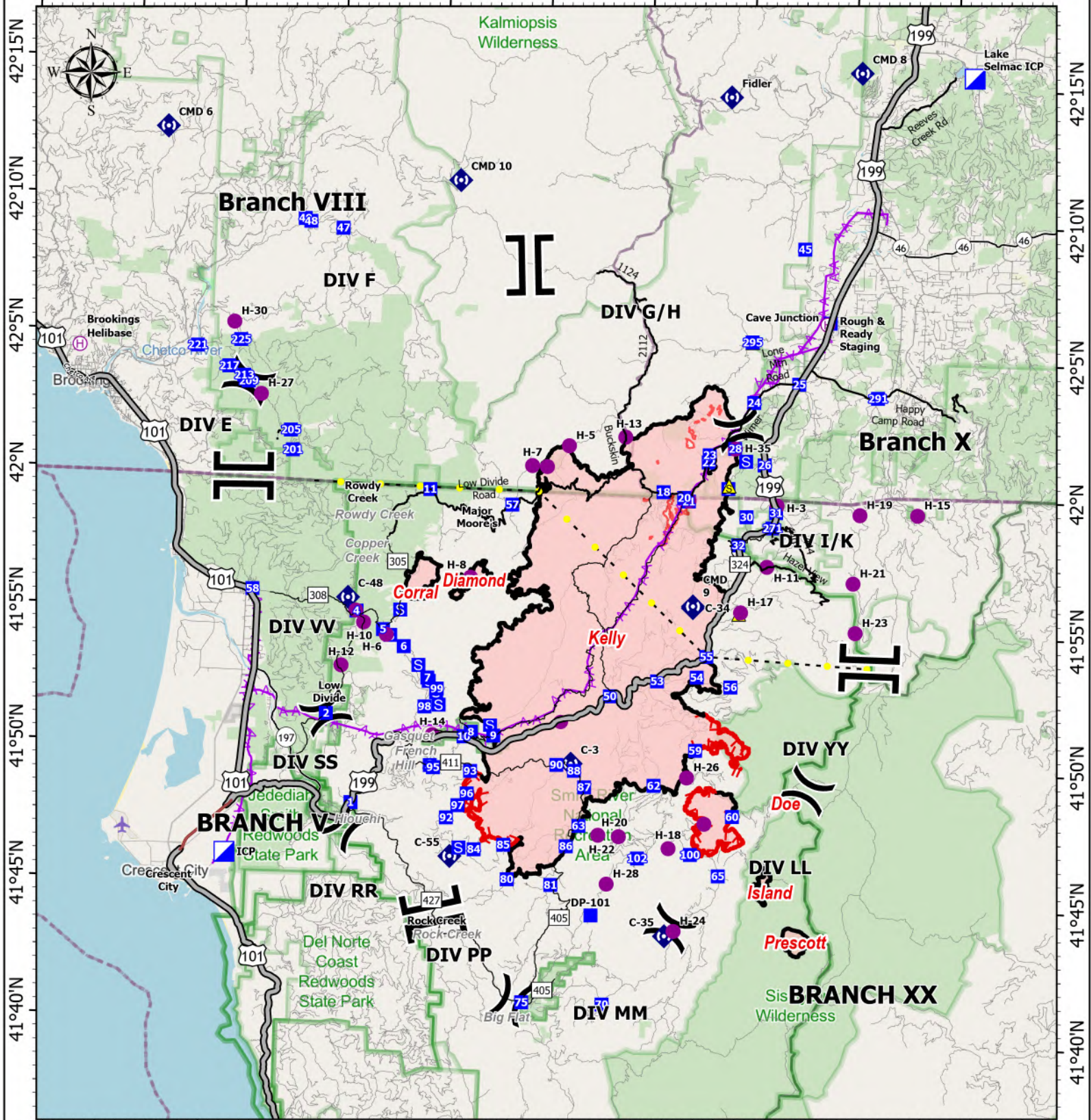


TRANSPORTATION

124°20'W 124°15'W 124°10'W 124°5'W 124°W 123°55'W 123°50'W 123°45'W 123°40'W 123°35'W

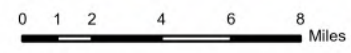


124°15'W 124°10'W 124°5'W 124°W 123°55'W 123°50'W 123°45'W 123°40'W 123°35'W 123°30'W

Smith River Complex
CA-SRF-000968
9/23/2023

94,168 acres at 9/21/2023 @ 2106 PDT
 9/22/2023 0858
 Acres from NIROPS

- Helispot
- ⊕ Helibase
- ⌘ Division Break
- ⌚ Branch Break
- ▣ Incident Command Post
- Drop Point
- Ⓜ Staging Area
- ⚡ Repeater
- ⚠ Safety Zone
- ⋯ Highlighted Feature
- ✈ Aerial Hazard
- ▬ Contained
- ▬ Uncontained
- ▬ Expressway
- ▬ Secondary Hwy
- ▬ Local Connector
- ▬ Major Roads
- ▬ County Road



North American 1983 Datum. Lat/Long Grid