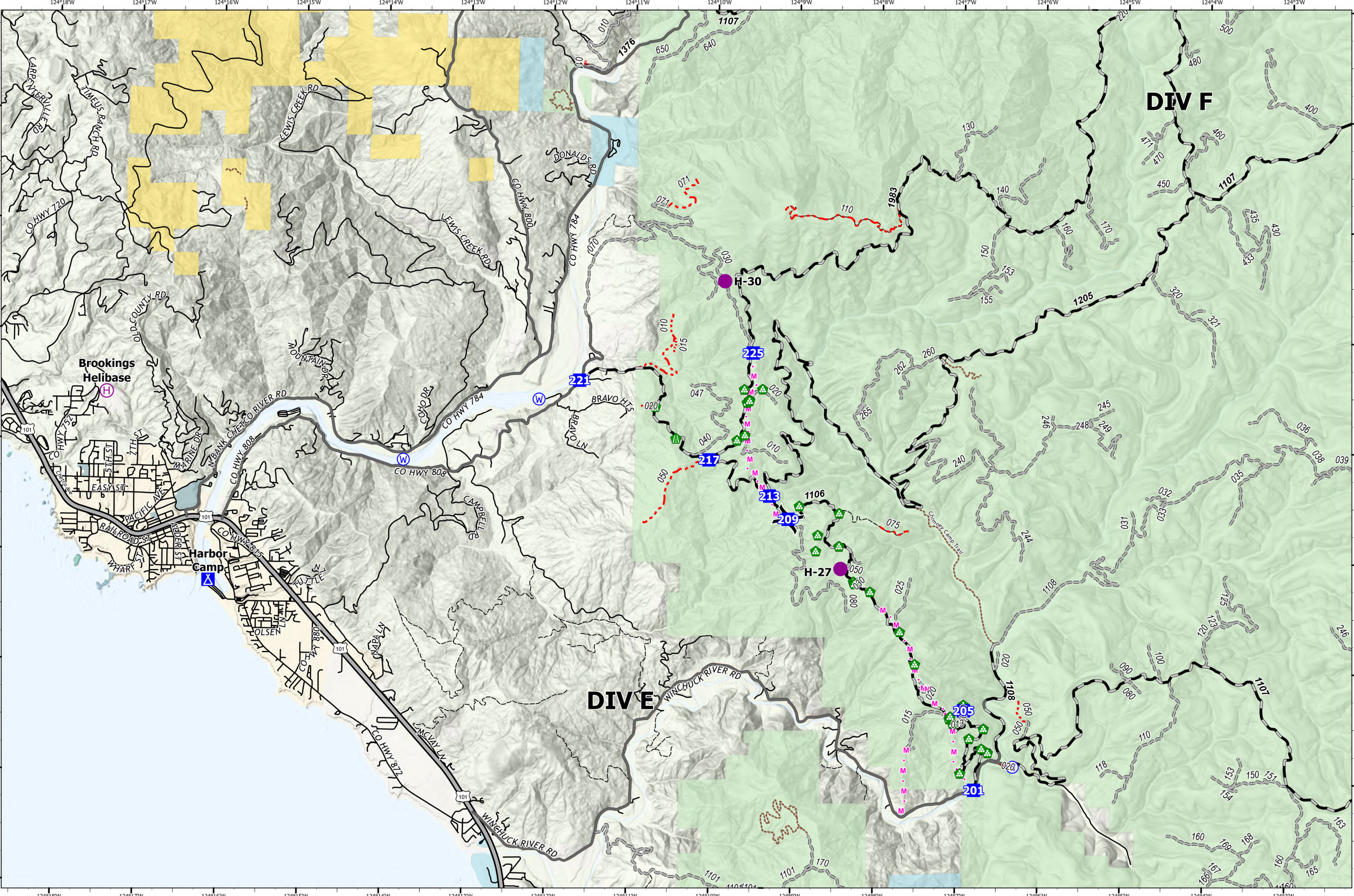


Transportation - DIV E/F



Smith River Complex
CA-SRF-000968
9/23/2023
94,168 acres at 9/21/2023 @ 2106 PDT

- Helispot
- Ⓜ Helibase
- ⌋ Division Break
- Drop Point
- ⓧ Camp
- 🏠 Road Repair
- 🌲 Landing or Log Deck
- Ⓜ Water Source
- M · M Planned Mixed Construction Line
- USGS Roads**
- Secondary Hwy
- Local Road
- - - 4WD
- Paved Road
- Forest Service Roads**
- Gravel Road
- - - Unimproved Roads
- · - · - Closed Roads
- · - · - Trail
- Jurisdictional Agency**
- City, County, Other
- State
- BLM
- USFS
- USFWS



PNW8
 9/22/2023 2222
 Acres from NIPOPS
 North American 1983 Datum, Lat/Long
 Grid

