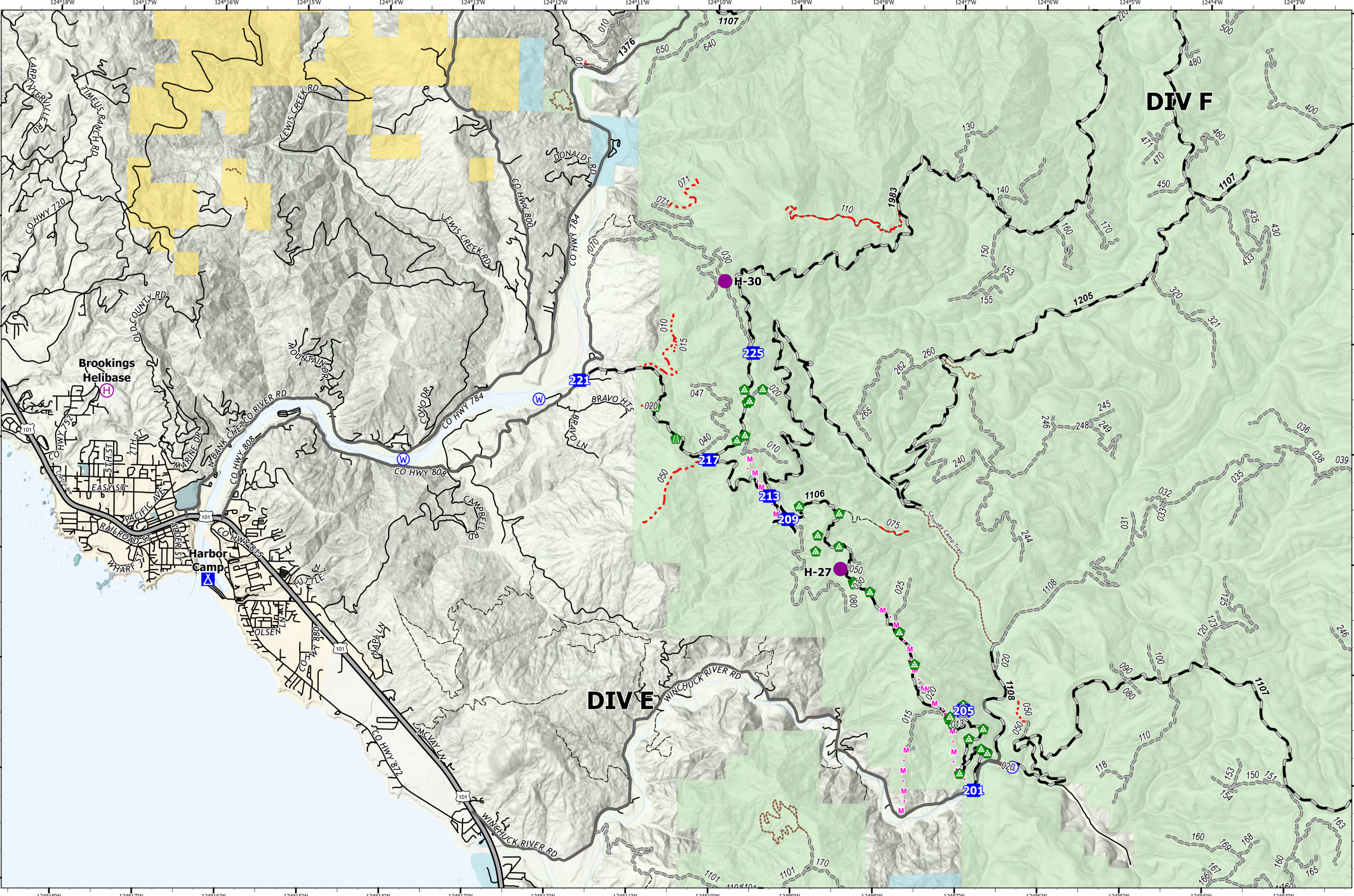


# Transportation - DIV E/F



**Smith River Complex**  
**CA-SRF-000968**  
**9/24/2023**  
*94,508 acres at 9/22/2023 @ 2004 PDT*

- Helispot
- Ⓜ Helibase
- ⌋ Division Break
- Drop Point
- Ⓜ Camp
- Ⓜ Road Repair
- Ⓜ Landing or Log Deck
- Ⓜ Water Source
- Ⓜ Planned Mixed Construction Line
- USGS Roads**
- Secondary Hwy
- Local Road
- - - 4WD
- Paved Road
- Forest Service Roads**
- Gravel Road
- - - Unimproved Roads
- - - Closed Roads
- - - Trail
- Jurisdictional Agency**
- City, County, Other
- State
- BLM
- USFS
- USFWS



PNW8  
 9/23/2023 2050  
 Acres from NIPOPS  
 North American 1983 Datum, Lat/Long  
 Grid

