

PUBLIC OPERATIONAL BRIEFING

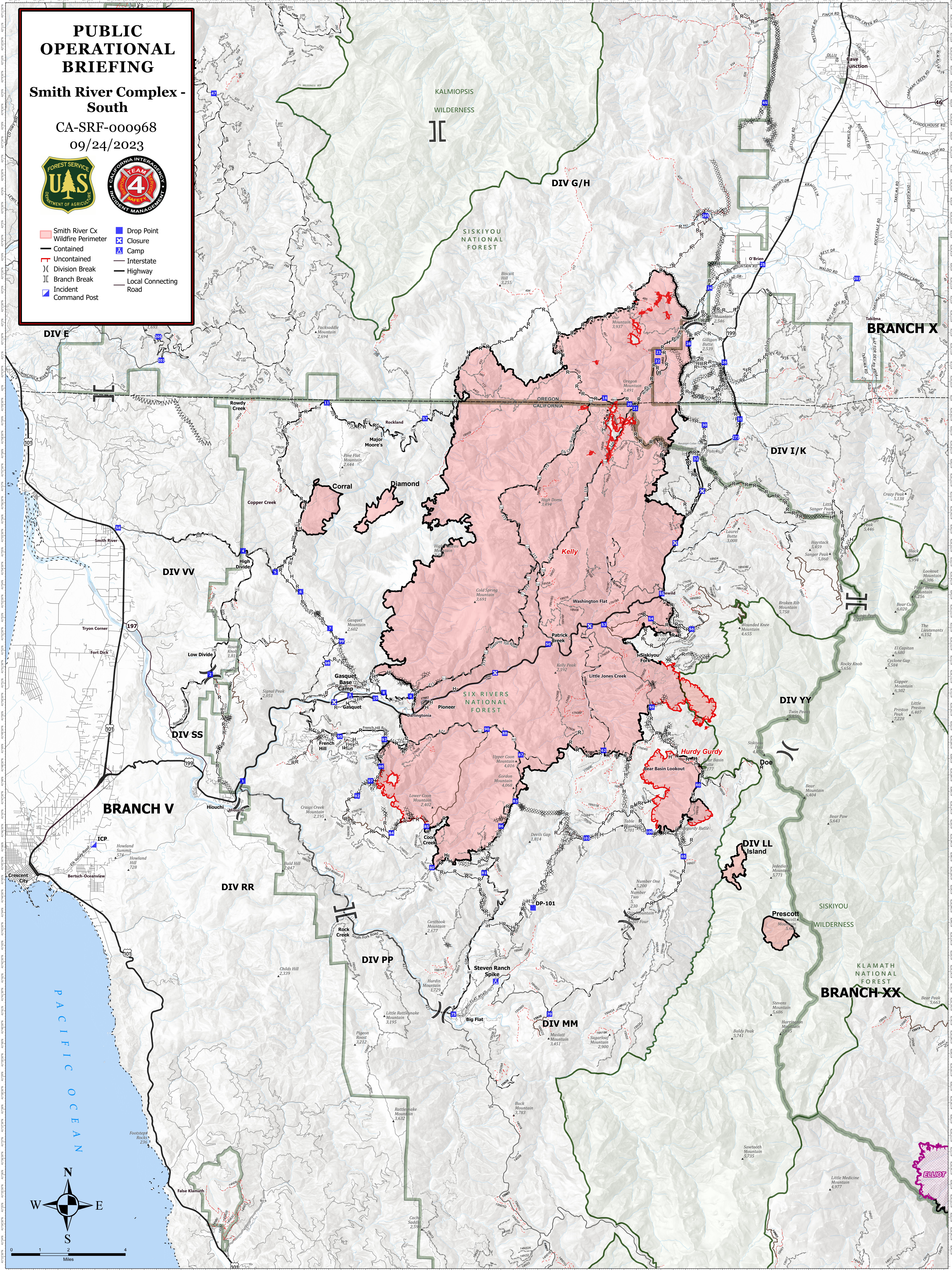
Smith River Complex - South

CA-SRF-000968

09/24/2023



- Smith River Cx
- Wildfire Perimeter
- Contained
- Uncontained
- Division Break
- Branch Break
- Incident Command Post
- Drop Point
- Closure
- Camp
- Interstate
- Highway
- Local Connecting Road



DIV E

KALMIOPSIS
WILDERNESS

DIV G/H

SISKIYOU
NATIONAL
FOREST

BRANCH X

DIV VV

DIV I/K

BRANCH V

DIV SS

SIX RIVERS
NATIONAL
FOREST

DIV YY

DIV RR

DIV LL
Island

DIV PP

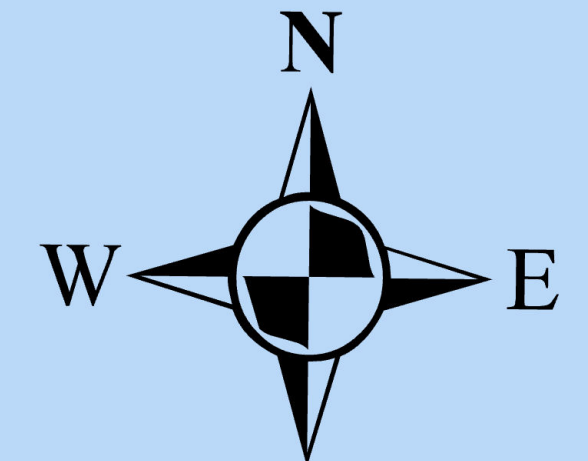
DIV MM

BRANCH-XX

SISKIYOU
WILDERNESS

KLAMATH
NATIONAL
FOREST

PACIFIC OCEAN



0 1 2 4
Miles

ELLIOT