

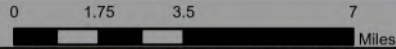


Information

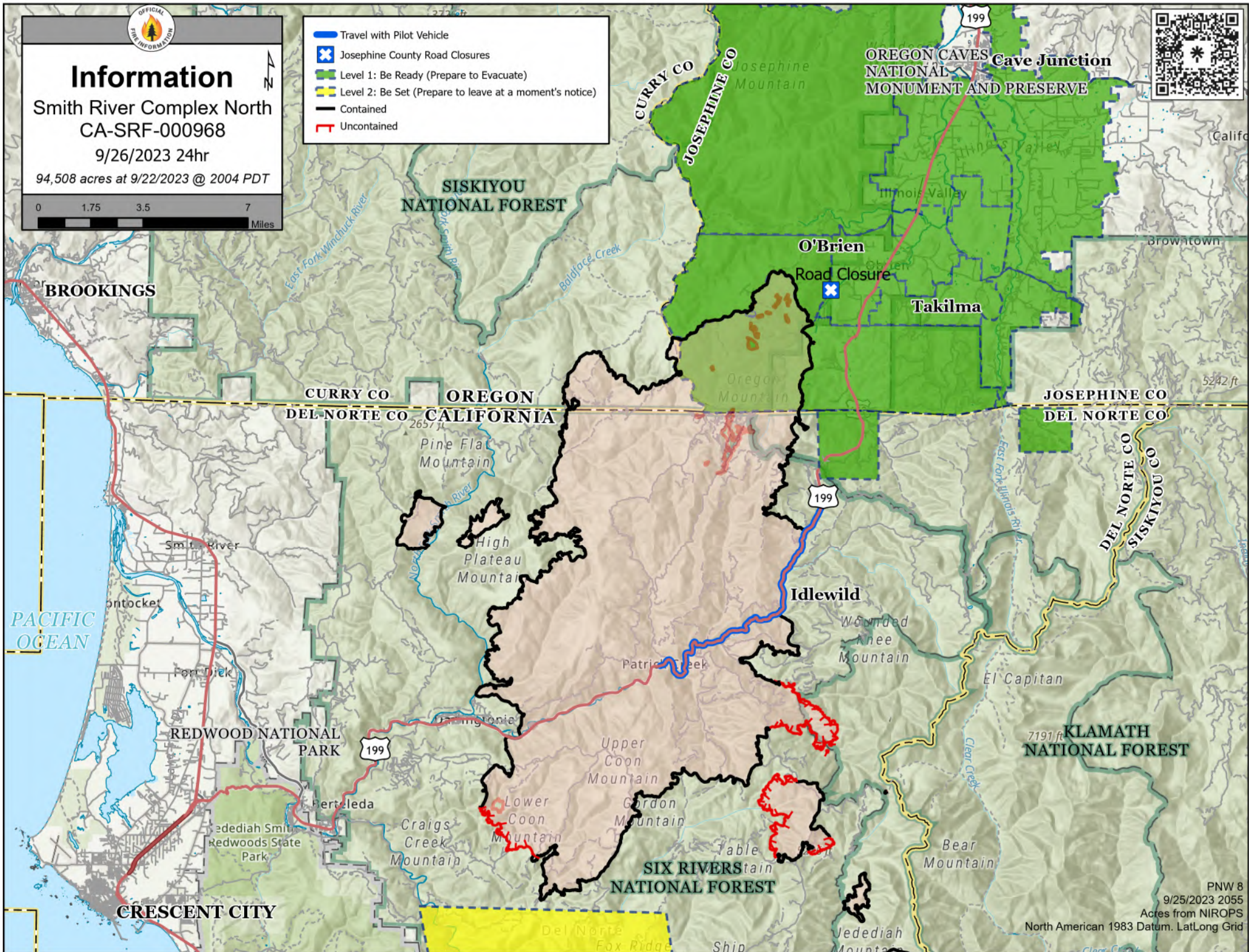
Smith River Complex North
CA-SRF-000968

9/26/2023 24hr

94,508 acres at 9/22/2023 @ 2004 PDT



- Travel with Pilot Vehicle
- Josephine County Road Closures
- Level 1: Be Ready (Prepare to Evacuate)
- Level 2: Be Set (Prepare to leave at a moment's notice)
- Contained
- Uncontained



PNW 8

9/25/2023 2055

Acres from NIROPS

North American 1983 Datum. Lat/Long Grid