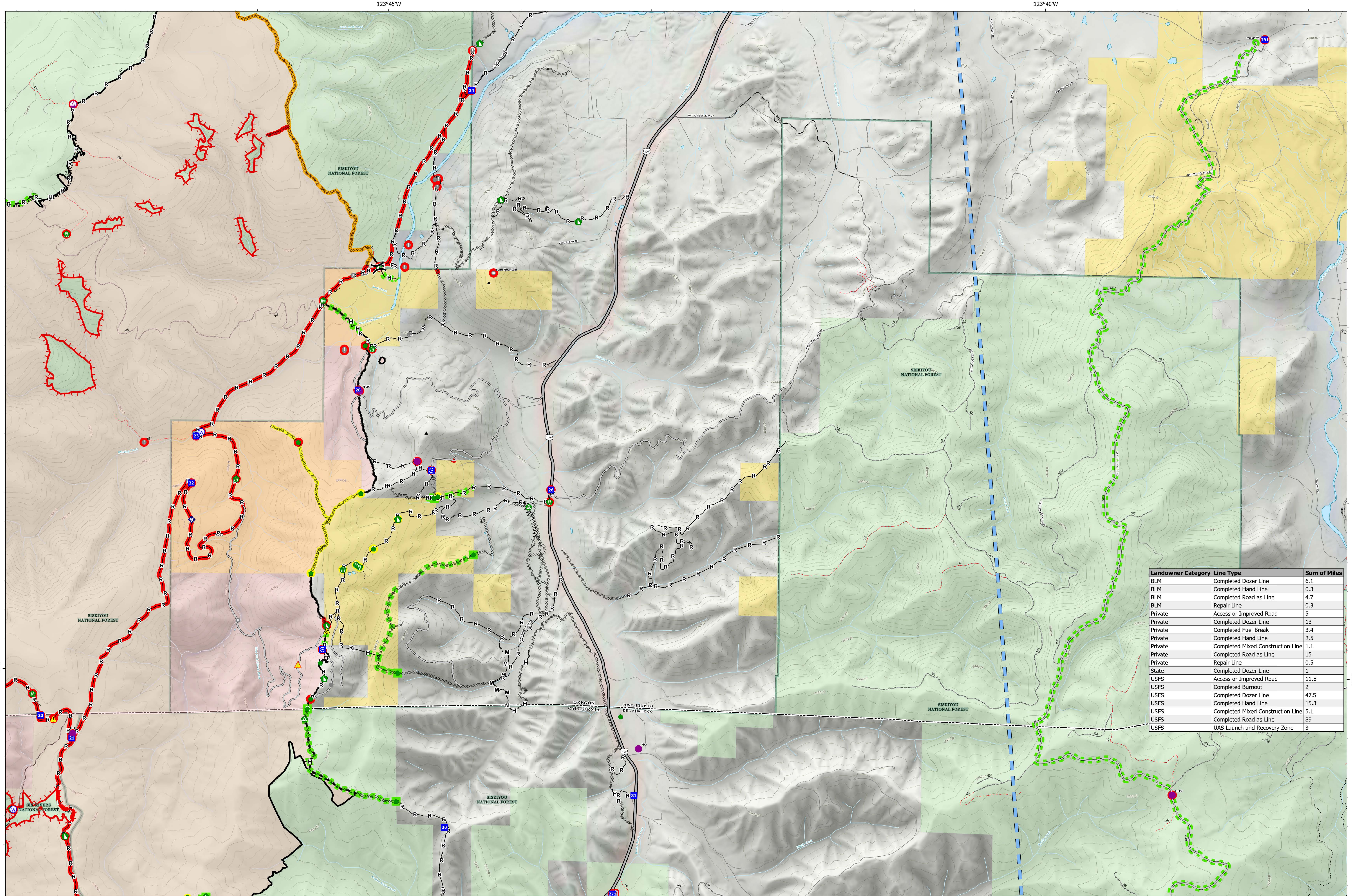


Suppression Repair Div I



Landowner Category	Line Type	Sum of Miles
BLM	Completed Dozer Line	6.1
BLM	Completed Hand Line	0.3
BLM	Completed Road as Line	4.7
BLM	Repair Line	0.3
Private	Access or Improved Road	5
Private	Completed Dozer Line	13
Private	Completed Fuel Break	3.4
Private	Completed Hand Line	2.5
Private	Completed Mixed Construction Line	1.1
Private	Completed Road as Line	15
Private	Repair Line	0.5
State	Completed Dozer Line	1
USFS	Access or Improved Road	11.5
USFS	Completed Burnout	2
USFS	Completed Dozer Line	47.5
USFS	Completed Hand Line	15.3
USFS	Completed Mixed Construction Line	5.1
USFS	Completed Road as Line	89
USFS	UAS Launch and Recovery Zone	3

Smith River Complex North
CA-SRF-000968
 9/26/2023
 94,508 acres at 9/22/2023 @ 2004 PDT
 9/25/2023 2058
 Acres from NIROPS
 North American 1983 Datum, Lat,Long Grid

- ▲ Peaks
- Helispot
- Slingshot
- ✕ Division Break
- Drop Point
- Staging Area
- Value at Risk
- Other
- Landmark
- Bridge
- Water
- Development or Draft Site
- Road Repair
- Repair Point
- Other
- Landing or Log Deck
- Fence - Cut/ Damaged
- Dozer Push
- Internet Access
- Safety Zone
- Hazard
- Water Source
- In Use - Fire Management
- Needs Assessment
- Repair Needed
- In Progress
- Other - See Comments
- Completed - Ready for Inspection
- Completed - Inspected
- No Repair Needed
- Other - See Comments
- Completed Burnout
- Completed Dozer Line
- Completed Fuel Break
- Completed Hand Line
- Completed Mixed Construction Line
- Completed Road as Line
- Access or Improved Road
- Temporary Flight Restriction
- Fire Edge (Field Collection)
- In Use - Fire Management
- Needs Assessment
- Repair Needed
- In Progress
- Completed - Ready for Inspection
- Completed - Inspected
- No Repair Needed
- Other - See Comments
- Contained
- Uncontained
- Trail
- State or Territory
- 40th Forest Service
- National Wilderness Areas
- City, County, State
- BLM
- ANCSA/Private
- BOB
- USFS
- USFWS
- BIA, Tribal
- DOE, Other
- Federal
- NPS
- DOD
- No Agency

0 0.13 0.25 0.5 0.75 1 Miles