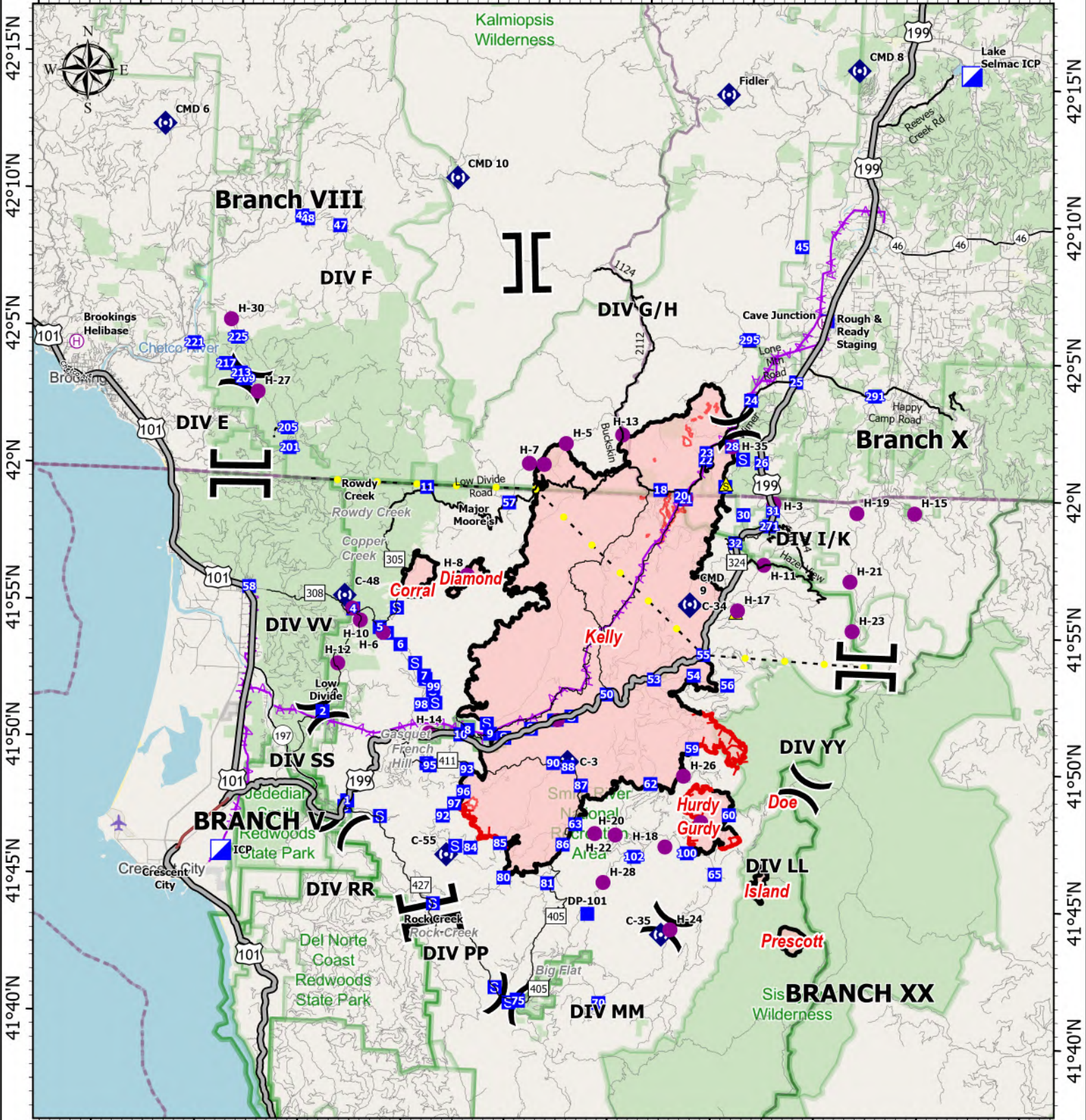


# TRANSPORTATION



124°20'W 124°15'W 124°10'W 124°5'W 124°W 123°55'W 123°50'W 123°45'W 123°40'W 123°35'W

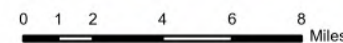


**Smith River Complex**  
**CA-SRF-000968**  
**9/26/2023**

94,508 acres at 9/22/2023 @ 2004 PDT  
 9/25/2023 1134  
 Acres from NIROPS

● Helispot	■ Staging Area	▭ Uncontained
⊕ Helibase	◆ Repeater	▬ Expressway
⌘ Division Break	▲ Safety Zone	▬ Secondary Hwy
⌚ Branch Break	— Highlighted Feature	▬ Local Connector
■ Incident Command Post	★ Aerial Hazard	▬ Major Roads
■ Drop Point	▬ Contained	▬ County Road



North American 1983 Datum. LatLong Grid