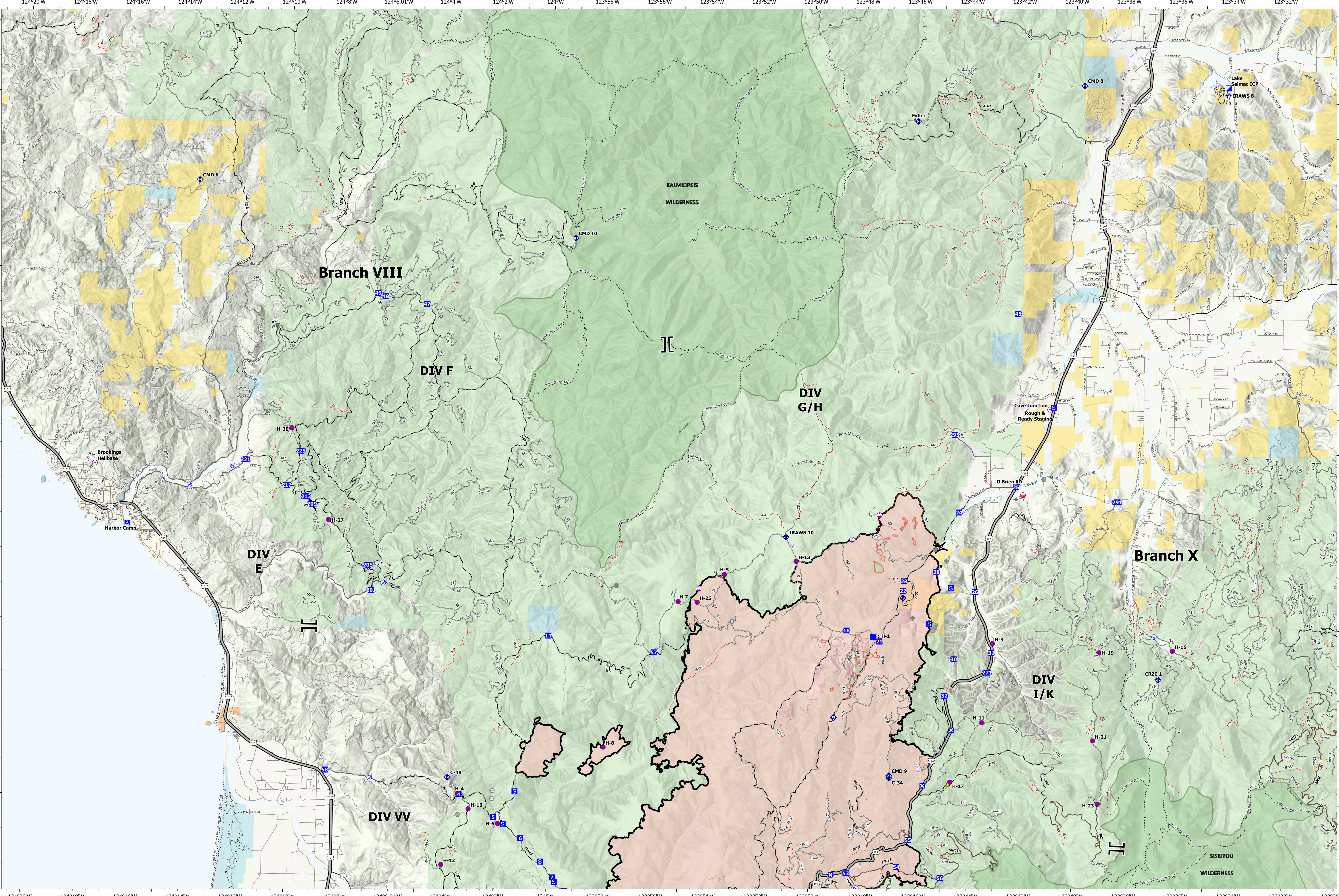



Transportation - North







Smith River Complex
 CA-SRF-000968
 9/26/2023
 94,508 acres at 9/22/2023 @ 2004 PDT

- | | |
|---|---|
| <ul style="list-style-type: none"> — Contained Area ● Mobile Retardant Base ● Helipoint ● Helibase ● Sling Site ✕ Division Break ✕ Branch Break ● Incident Command Post ● Drop Point ● Closure ● Camp ● Staging Area ● Gate ● Fire Station ● Bridge ● Mobile Weather Unit ● Internet Access ● Repeater ● Safety Zone ● Water Source — USGS Roads — Secondary Hwy — Local Connector — Local Road — 4WD — Tunnel — Forest Service Roads — Paved Road — Gravel Road — Dirt Road — Unimproved Roads — Closed Roads — Trail | <ul style="list-style-type: none"> — Jurisdictional Agency — City, County, Other — State — BLM — ANCSA/Private — USFS — USFWS — BIA, Tribal — NPS — Federal Wilderness Boundary |
|---|---|



PNW8
9/25/2023 2049
Acres from NIROPS
North American 1983 Datum, LatLong Grid



0 1 2 4 6 Miles