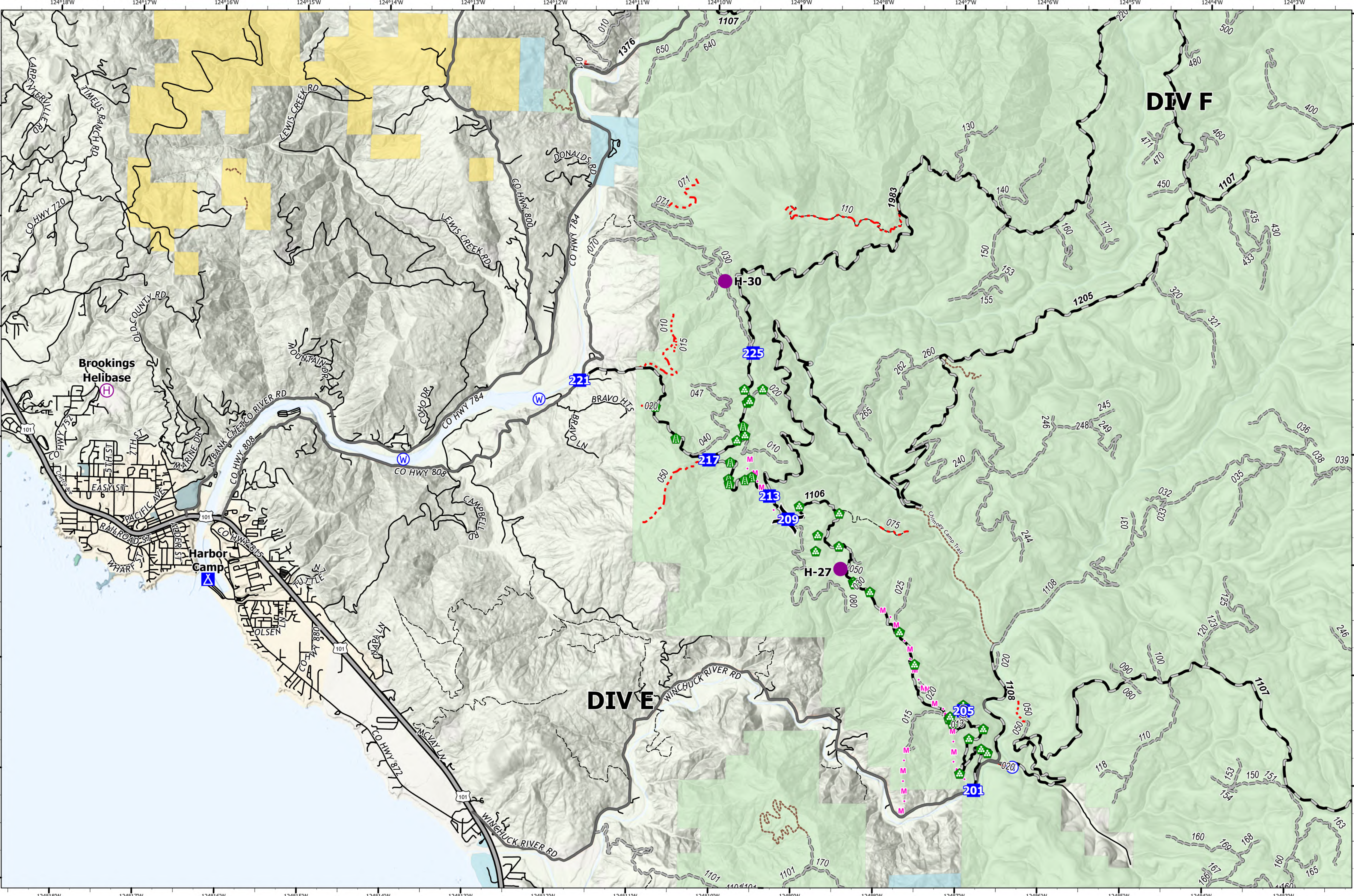


Transportation - DIV E/F



Smith River Complex
CA-SRF-000968
9/26/2023
94,508 acres at 9/22/2023 @ 2004 PDT

- | | | | | | |
|------------------|-----------------------|-----------------------------------|------------------------|----------------------|------------------------------|
| ● Helipote | ⓧ Camp | — Planned Mixed Construction Line | — Local Road | — Gravel Road | Jurisdictional Agency |
| Ⓜ Helibase | Ⓜ Road Repair | — USGS Roads | --- 4WD | --- Unimproved Roads | |
| ⓧ Division Break | Ⓜ Landing or Log Deck | — Secondary Hwy | — Forest Service Roads | --- Closed Roads | |
| ■ Drop Point | Ⓜ Water Source | | — Paved Road | --- Trail | |
| | | | | | City, County, Other |
| | | | | | State |
| | | | | | BLM |
| | | | | | USFS |
| | | | | | USFWS |

PNW8
9/25/2023 2049
Acres from NIROPS
North American 1983 Datum, Lat/Long Grid

0 0.5 1 2 Miles