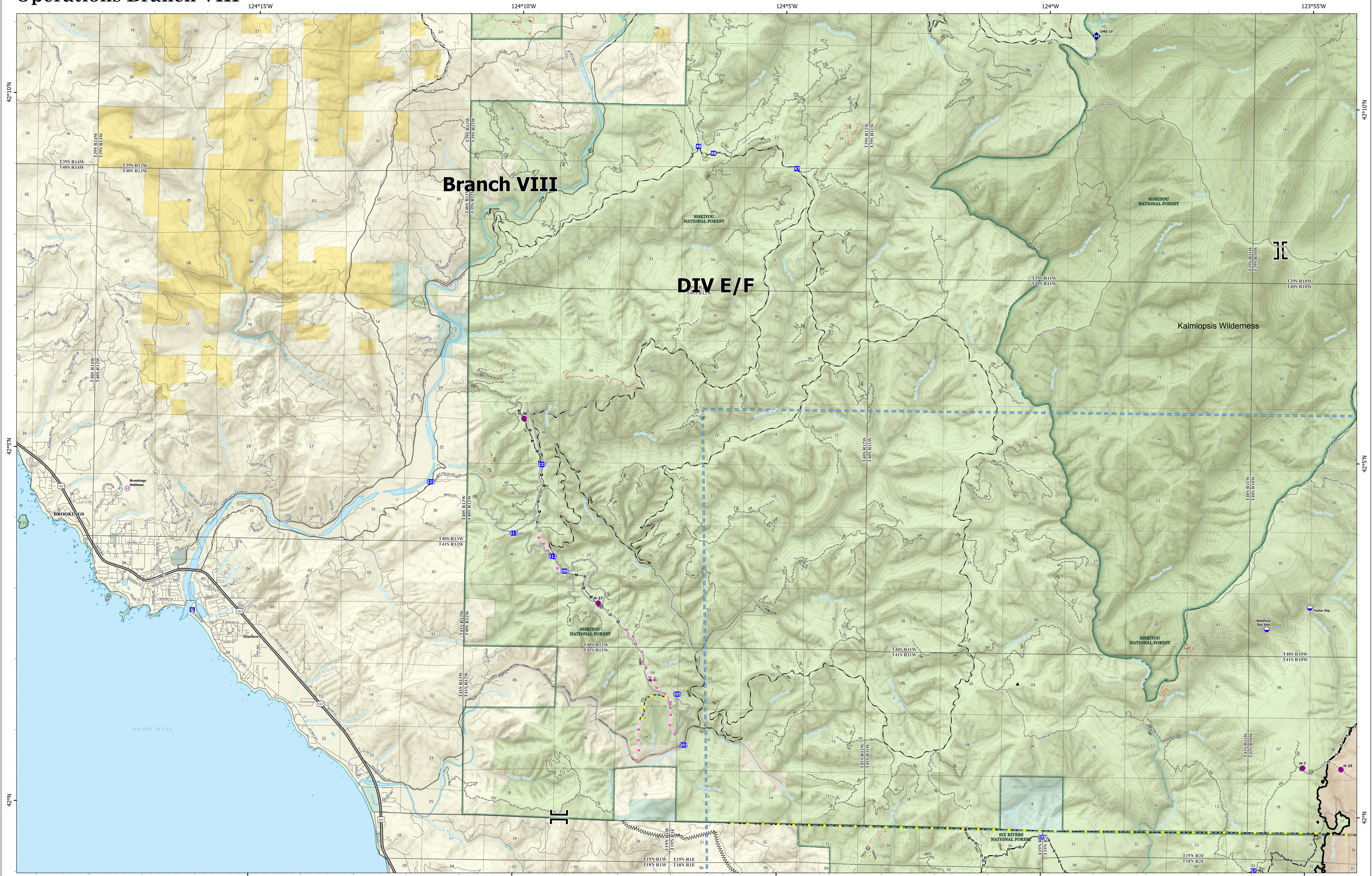


# Operations Branch VIII



**Smith River Complex**  
**North**  
**CA-SRF-000968**  
**9/27/2023**

94,508 acres at 9/22/2023 @ 2004 PDT

9/26/2023 2229  
 Acres from NIROPS  
 North American 1983 Datum, Lat/Long Grid

- |                 |                        |                                      |                                |                  |                             |
|-----------------|------------------------|--------------------------------------|--------------------------------|------------------|-----------------------------|
| ● Dip Site      | ● Value at Risk        | MM Completed Fuel Break              | — Highlighted Feature          | — Closed Roads   | — National Wilderness Areas |
| ● Helibase      | ● Other                | — Completed Hand Line                | — Temporary Flight Restriction | — Secondary Hwy  | — City, County, Other       |
| II Branch Break | ● Bridge               | M— Completed Mixed Construction Line | — Contained                    | — Local Road     | — BLM                       |
| ■ Drop Point    | ◆ Repeater             | R— Completed Road as Line            | — Paved Road                   | — 4WD            | — USFS                      |
| ■ Staging Area  | ▲ Peaks                | — Planned Mixed Construction Line    | — Gravel Road                  | — Trail          | — USFS                      |
|                 | — Completed Dozer Line | — Access or Improved Road            | — Unimproved Roads             | — Forest Service |                             |

