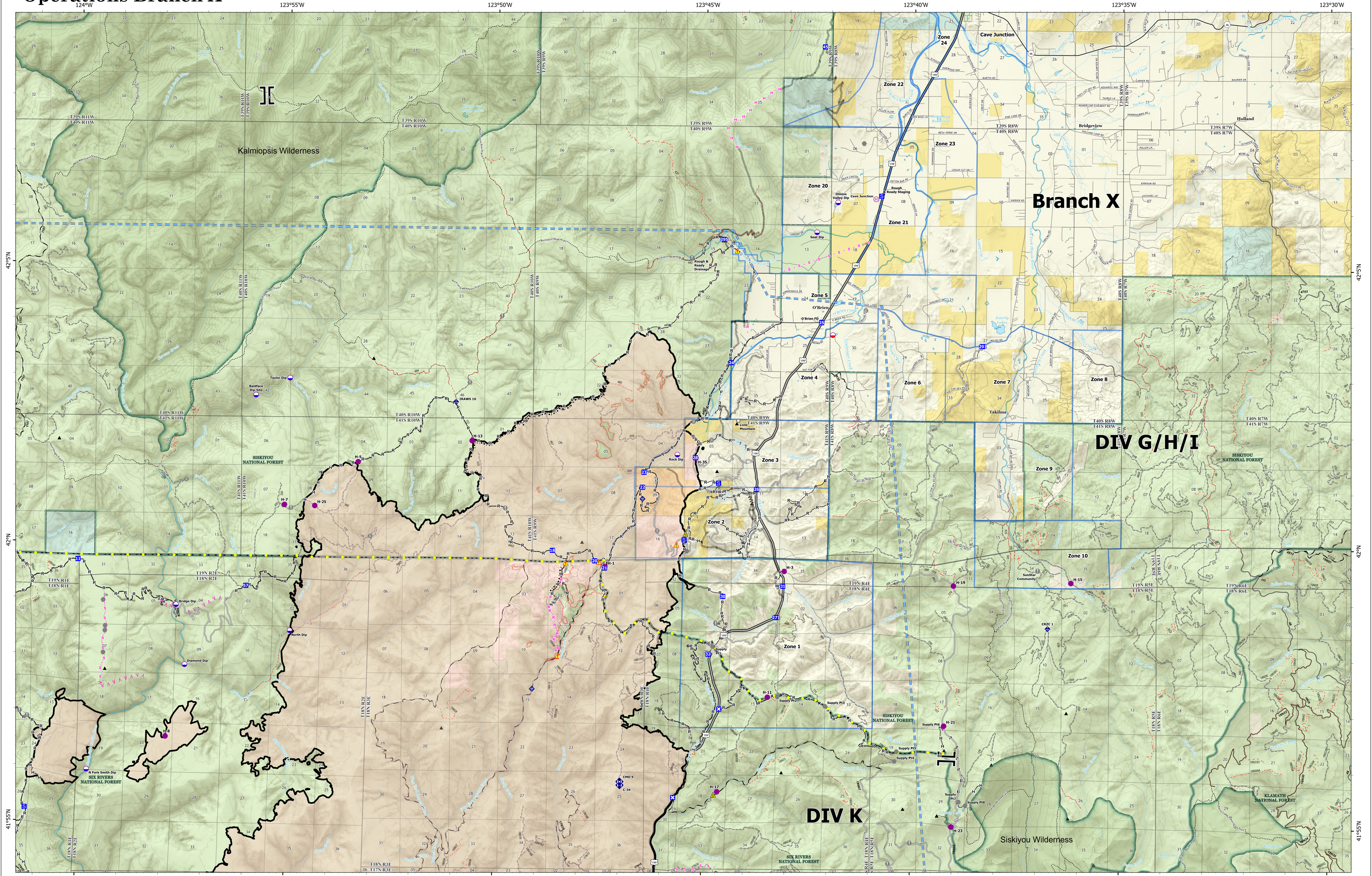


# Operations Branch X



**Smith River  
Complex North  
CA-SRF-000968  
9/27/2023**

94,508 acres at 9/22/2023 @ 2004 PDT  
9/26/2023 2227  
Acres from NIROPS  
North American 1983 Datum, Lat/Long Grid

- |  |   |  |  |   |   |
|--|---|--|--|---|---|
| <ul style="list-style-type: none"> <li>● Dip Site</li> <li>● Mobile Retardant Base</li> <li>● Helispot</li> <li>● Helibase</li> <li>   Branch Break</li> <li>● Drop Point</li> <li>■ Closure</li> <li>■ Staging Area</li> <li>● Value at Risk</li> </ul> | <ul style="list-style-type: none"> <li>● Other</li> <li>● Landmark</li> <li>● Fire Station</li> <li>● Bridge</li> <li>● Mobile Weather Unit</li> <li>● Internet Access</li> <li>● Repeater</li> <li>▲ Staging Zone</li> <li>▲ Hazard</li> </ul> | <ul style="list-style-type: none"> <li>— Completed Burnout</li> <li>— Completed Dozer Line</li> <li>— Completed Fuel Break</li> <li>— Completed Hand Line</li> <li>— Completed Mixed Construction Line</li> <li>— Completed Road as Line</li> <li>— Planned Fuel Break</li> <li>— Planned Hand Line</li> <li>— Planned Road as Line</li> </ul> | <ul style="list-style-type: none"> <li>— Planned Secondary Line</li> <li>— Access or Improved Road</li> <li>— Highlighted Feature</li> <li>— Temporary Flight Restriction</li> <li>— Contained</li> <li>— Paved Road</li> <li>— Gravel Road</li> <li>— Dirt Roads</li> <li>— Unimproved Roads</li> </ul> | <ul style="list-style-type: none"> <li>— Closed Roads</li> <li>— Secondary Hwy</li> <li>— Local Connector</li> <li>— Local Road</li> <li>— 4WD</li> <li>— Tunnel</li> <li>— Structure Zones</li> <li>— Forest Service</li> <li>— National Wilderness Areas</li> </ul> | <ul style="list-style-type: none"> <li>State</li> <li>BLM</li> <li>ANCSA/Private</li> <li>USFS</li> </ul> |
|--|---|--|--|---|---|

