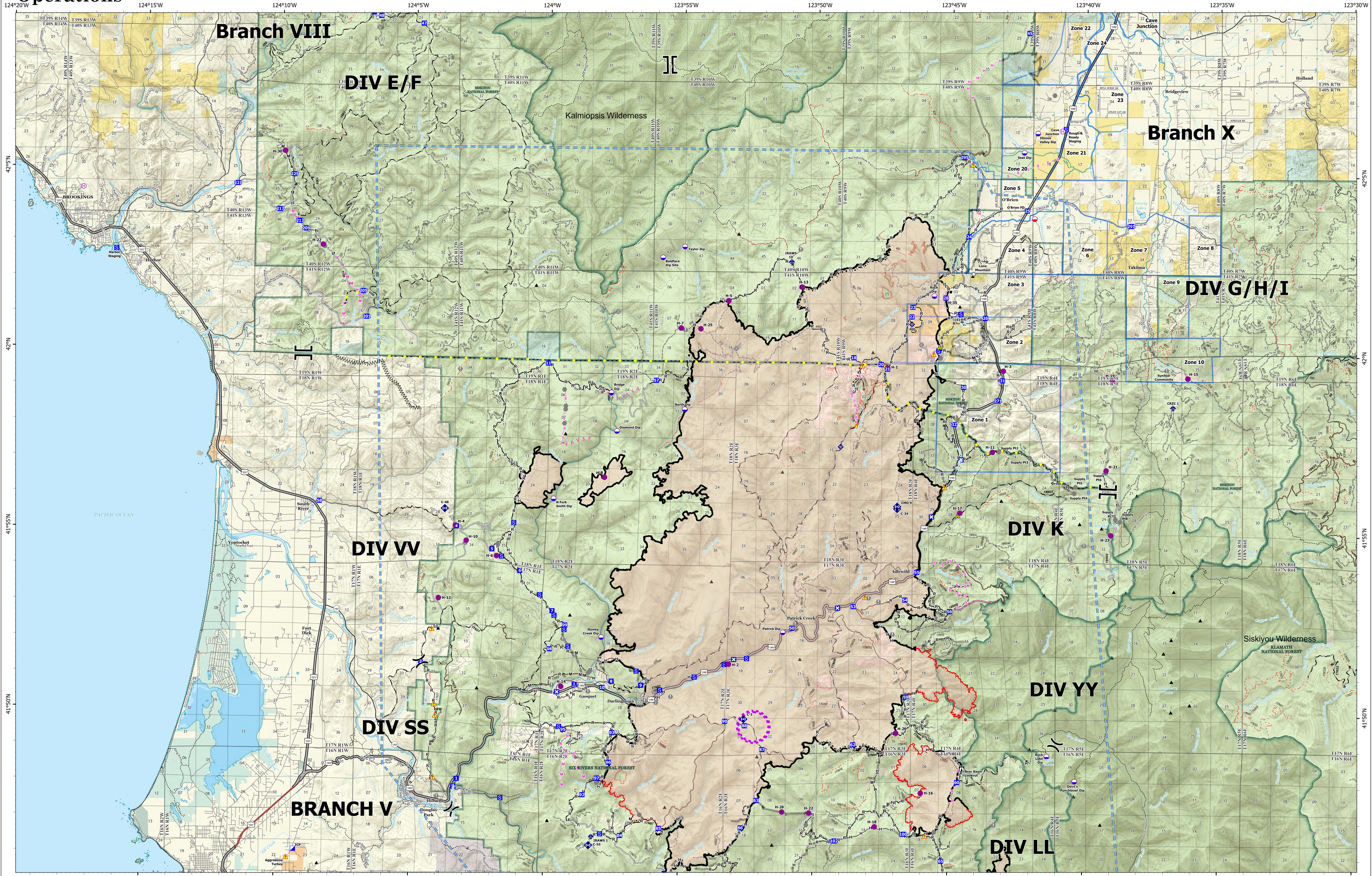


Operations



**Smith River
Complex North
CA-SRF-000968
9/27/2023**

94,508 acres at 9/22/2023 @ 2004 PDT
9/26/2023 2225
Acres from NIROPS
North American 1983 Datum, Lat/Long Grid

- | | | | | | | |
|-------------------------|-----------------------|-------------------------------------|-----------------------------------|--------------------|-----------------------|-----------------------------|
| ● Dip Site | ■ Staging Area | ▲ Safety Zone | ▲ Planned Fuel Break | — Uncontained | — Ramp | — USFWS |
| ● Mobile Retardant Base | ■ Lookout | ▲ Hazard | — Planned Hand Line | — Paved Road | — 4WD | — BIA, Tribal |
| ● Value at Risk | ■ Value at Risk | ▲ Peaks | — Planned Mixed Construction Line | — Gravel Road | — Tunnel | — NPS |
| ● Helibase | ○ Other | ■ Completed Burnout | — Planned Road as Line | — Dirt Roads | — Trail | — National Wilderness Areas |
| ○ Landmark | ○ Fire Station | — Completed Dozer Line | — Planned Secondary Line | — Unimproved Roads | — Structure Zones | — Forest Service |
| ■ Division Break | ○ Bridge | — Branch Break | — Access or Improved Road | — Closed Roads | — City, County, Other | |
| ■ Incident Command Post | ● Mobile Weather Unit | — Incident Hand Line | — Highlighted Feature | — Expressway | — State | |
| ■ Drop Point | ● Internet Access | — Completed Mixed Construction Line | — UAS Launch and Recovery Zone | — Secondary Hwy | — BLM | |
| ■ Closure | ● Repeater | — Completed Road as Line | — Temporary Flight Restriction | — Local Connector | — ANCSA/Private | |
| ■ Camp | | — Planned Dozer Line | — Contained | — Local Road | — USFS | |



200 foot contours