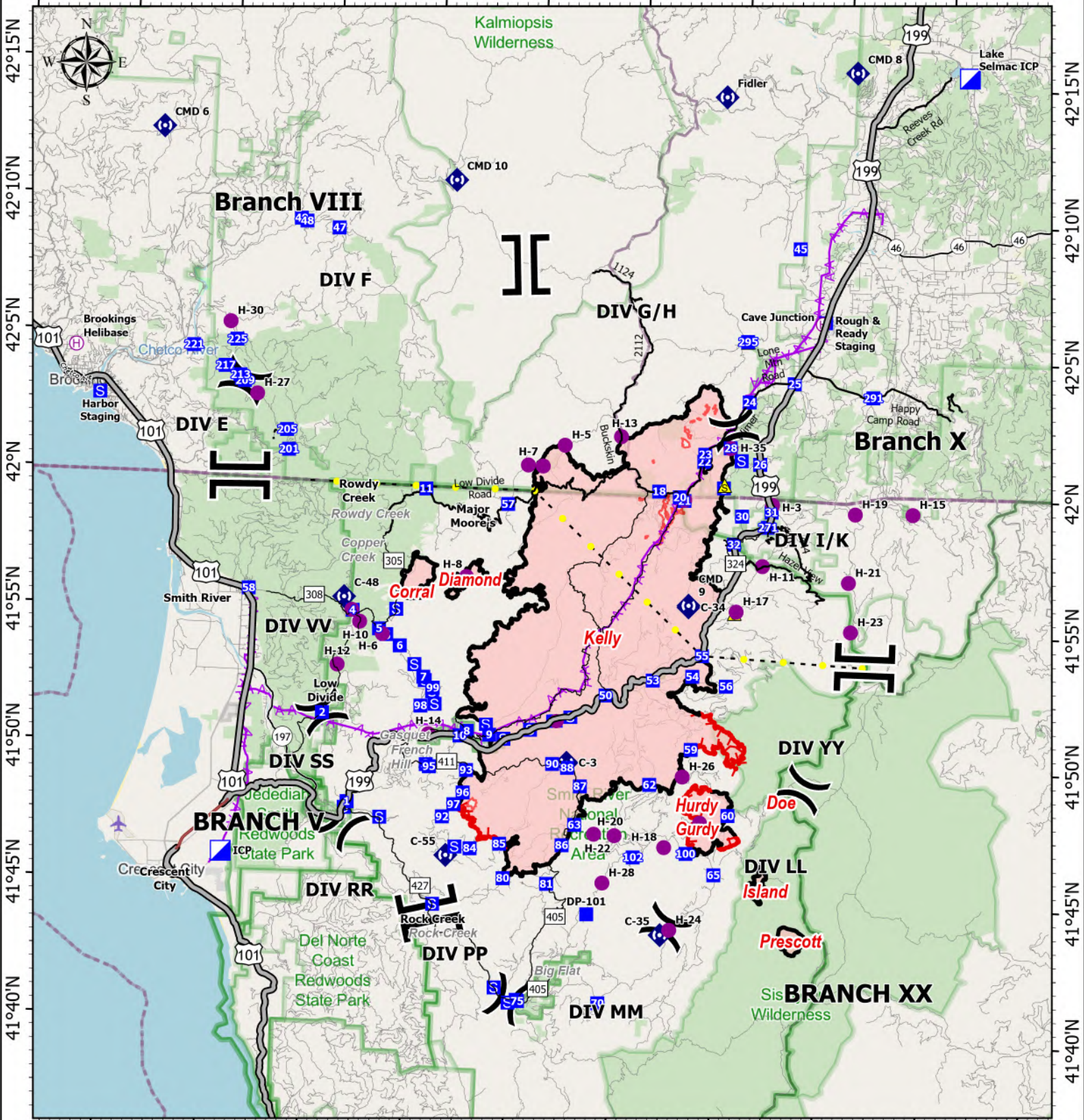


TRANSPORTATION

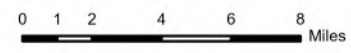
124°20'W 124°15'W 124°10'W 124°5'W 124°W 123°55'W 123°50'W 123°45'W 123°40'W 123°35'W



Smith River Complex
CA-SRF-000968
9/27/2023

94,508 acres at 9/22/2023 @ 2004 PDT
 9/26/2023 1516
 Acres from NIROPS

- Helispot
- ⊕ Helibase
- ⌘ Division Break
- ⌚ Branch Break
- ⚡ Incident
- ⚡ Command Post
- Drop Point
- Ⓜ Staging Area
- Ⓜ Repeater
- ⚠ Safety Zone
- Highlighted Feature
- ⚡ Aerial Hazard
- Contained
- Uncontained
- Expressway
- Secondary Hwy
- Local Connector
- Major Roads
- County Road
- Cities



North American 1983 Datum. Lat/Long Grid