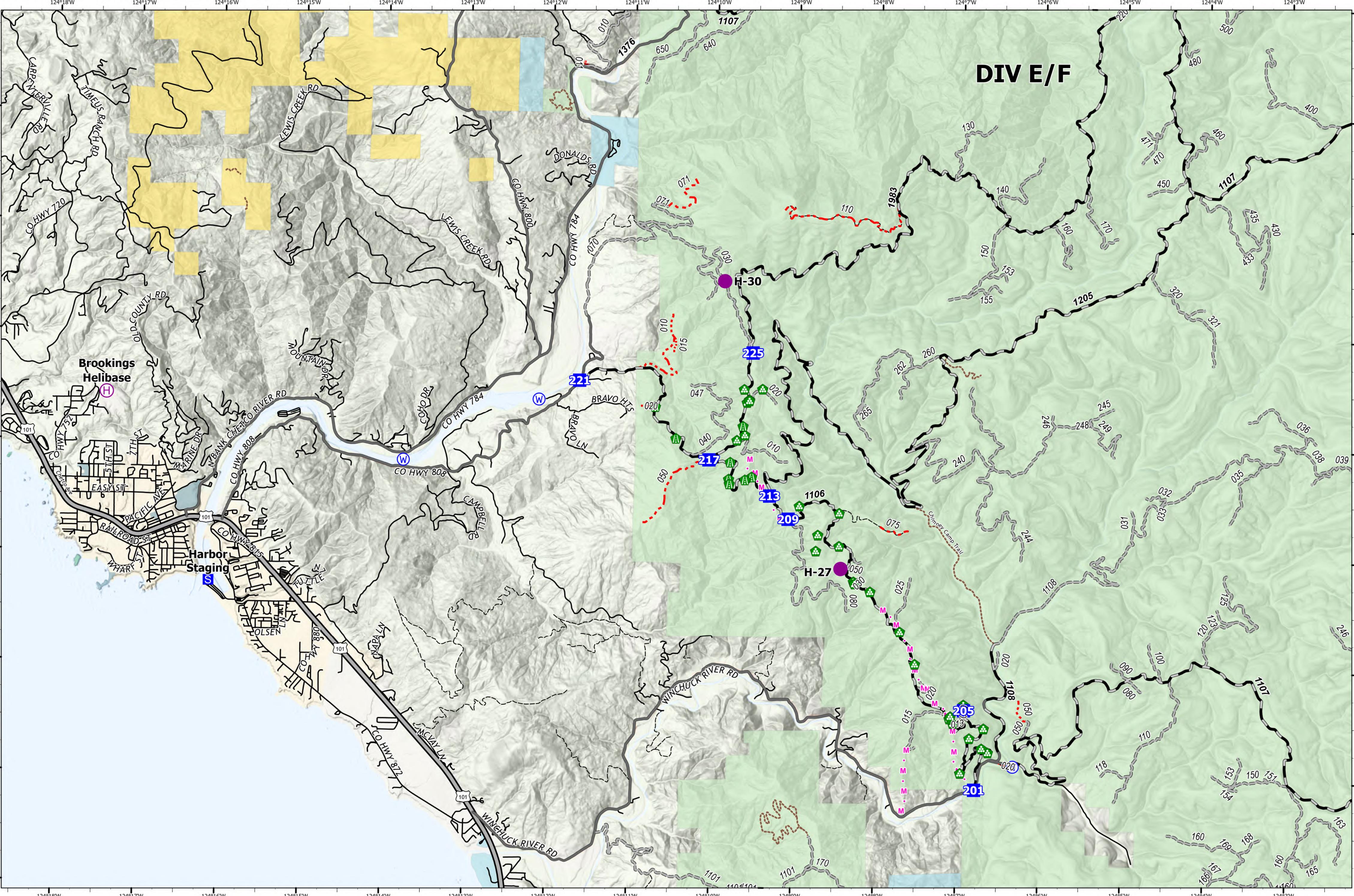


Transportation - DIV E/F



Smith River Complex
CA-SRF-000968
9/27/2023
94,508 acres at 9/22/2023 @ 2004 PDT

- | | | | | | |
|--------------|---------------------|---------------------------------|----------------------|------------------|------------------------------|
| Helispot | Road Repair | Planned Mixed Construction Line | Local Road | Gravel Road | Jurisdictional Agency |
| Helibase | Landing or Log Deck | Water Source | 4WD | Unimproved Roads | |
| Drop Point | Water Source | USGS Roads | Forest Service Roads | Closed Roads | BLM |
| Staging Area | | Secondary Hwy | Paved Road | Trail | USFS |
| | | | | | USFWS |

PNW8
9/26/2023 2232
Acres from NIROPS
North American 1983 Datum, Lat/Long Grid

0 0.5 1 2 Miles