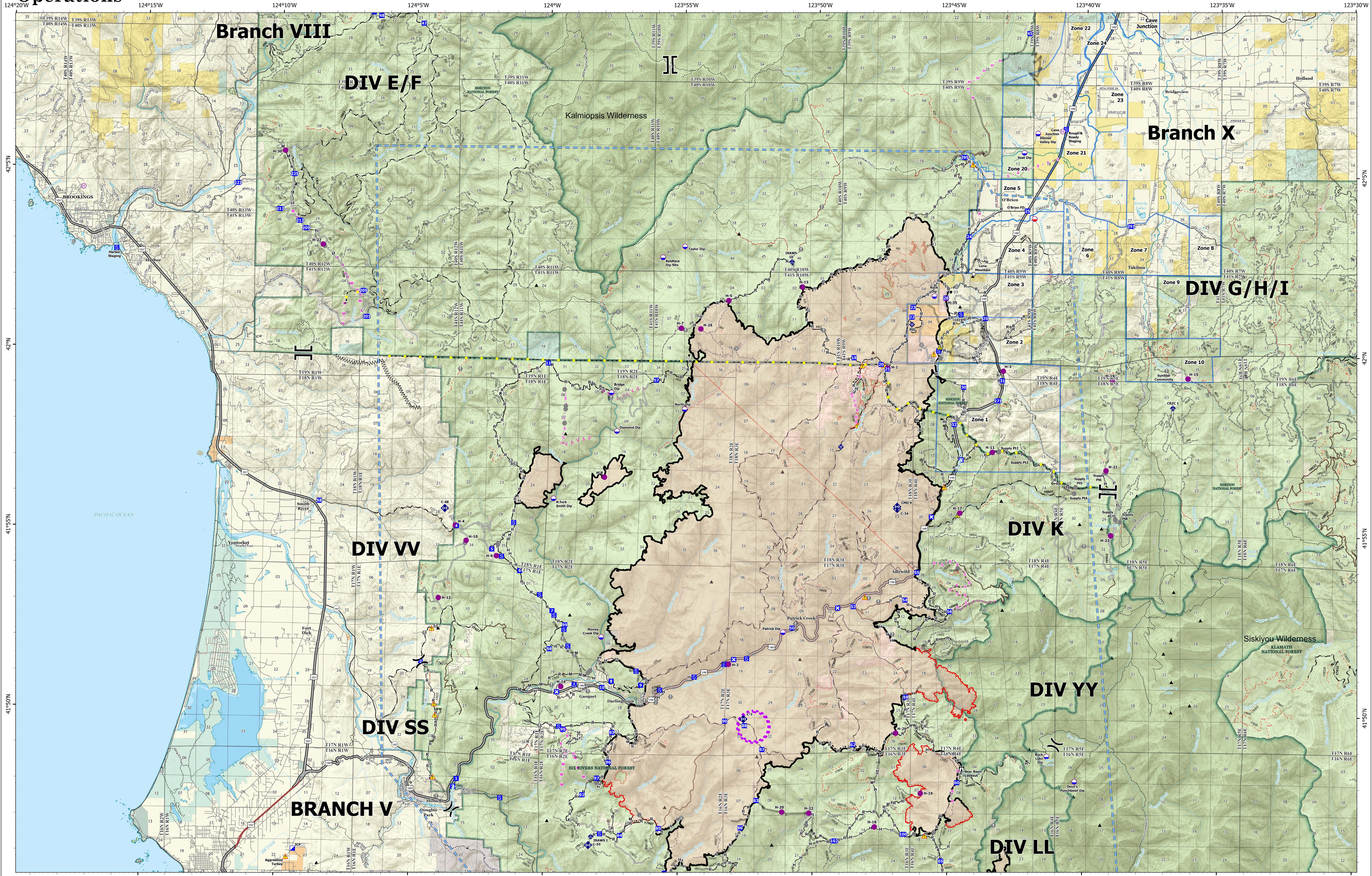


Operations



**Smith River
Complex North
CA-SRF-000968
9/28/2023**

94,568 acres at 9/26/2023 @ 1940 PDT
9/27/2023 2210
Acres from NIROPS
North American 1983 Datum, Lat/Long Grid

- | | | | | | | |
|--|---|---|---|--|---|--|
| <ul style="list-style-type: none"> ○ Dip Site ● Mobile Retardant Base ● Helispot ● Helibase ○ Other ○ Landmark ○ Fire Station ○ Incident Command Post ■ Drop Point ■ Closure ■ Repeater | <ul style="list-style-type: none"> ■ Staging Area ■ Lookout ■ Value at Risk ○ Other ○ Landmark ○ Fire Station ○ Incident Command Post ■ Drop Point ■ Closure ■ Repeater | <ul style="list-style-type: none"> ▲ Safety Zone ▲ Hazard ▲ Peaks ■ Completed Burnout ■ Completed Dozer Line ■ Completed Fuel Break ■ Completed Hand Line ■ Completed Mixed Construction Line ■ Completed Road as Line ■ Planned Dozer Line | <ul style="list-style-type: none"> ■ Planned Fuel Break ■ Planned Hand Line ■ Planned Mixed Construction Line ■ Planned Road as Line ■ Planned Secondary Line ■ Access or Improved Road ■ Highlighted Feature ■ UAS Launch and Recovery Zone ■ Temporary Flight Restriction ■ Contained | <ul style="list-style-type: none"> — Uncontained — Paved Road — Gravel Road — Dirt Roads — Unimproved Roads — Closed Roads — Expressway — Secondary Hwy — Local Connector — Local Road | <ul style="list-style-type: none"> — Ramp — 4WD — Tunnel — Trail — Structure Zones — City, County, Other — State — BLM — ANCSA/Private — USFS | <ul style="list-style-type: none"> — USFWS — BIA, Tribal — NPS — National Wilderness Areas — Forest Service |
|--|---|---|---|--|---|--|

