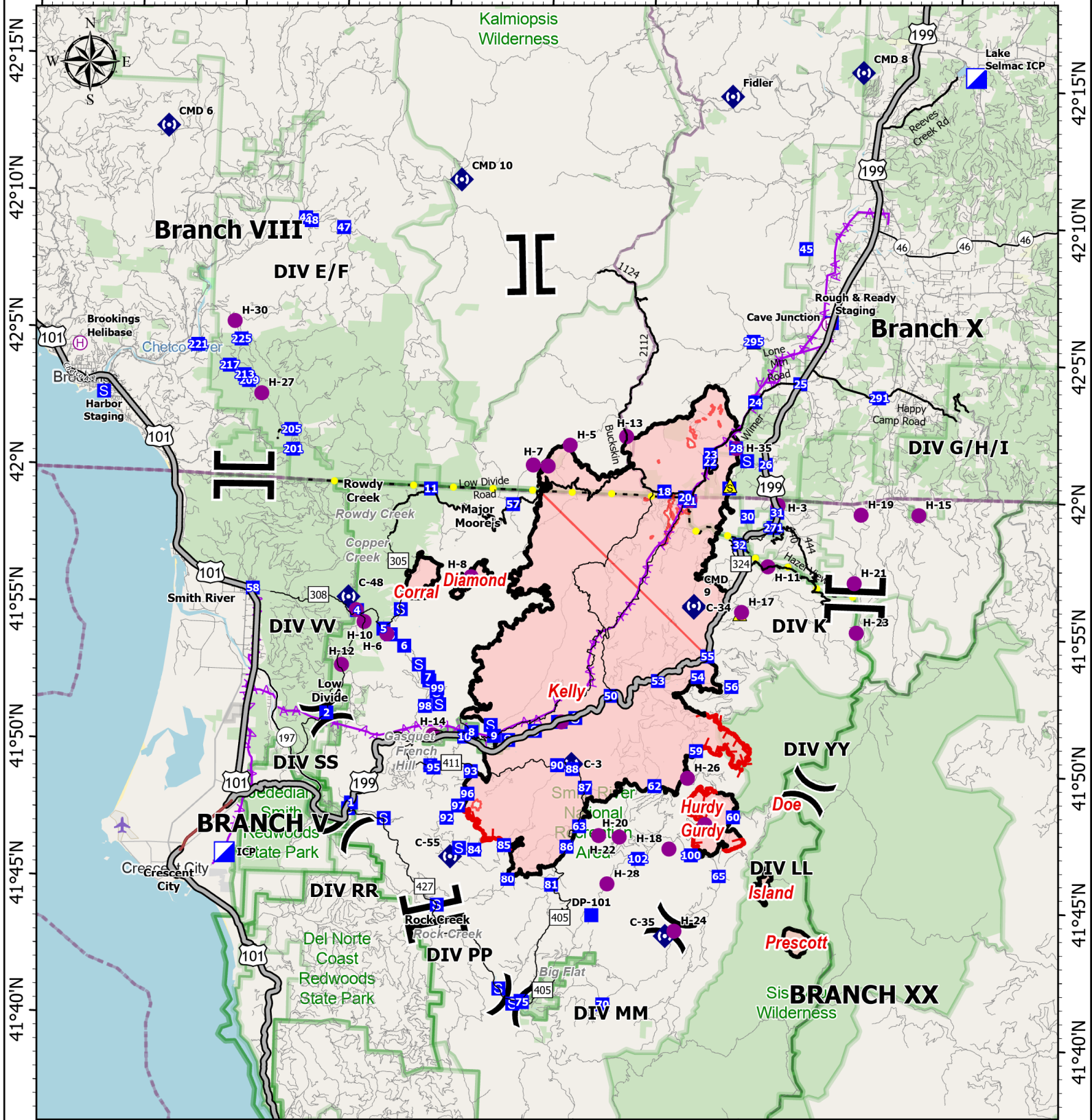


TRANSPORTATION

124°20'W 124°15'W 124°10'W 124°5'W 124°W 123°55'W 123°50'W 123°45'W 123°40'W 123°35'W



124°15'W 124°10'W 124°5'W 124°W 123°55'W 123°50'W 123°45'W 123°40'W 123°35'W 123°30'W

Smith River Complex
CA-SRF-000968
9/28/2023

94,568 acres at 9/26/2023 @ 1940 PDT
 9/27/2023 2214
 Acres from NIROPS

- Helispot
- Ⓜ Helibase
- ⌋ Division Break
- ⌌ Branch Break
- Ⓧ Incident
- Ⓩ Command Post
- Drop Point
- Ⓢ Staging Area
- Ⓛ Repeater
- ⚠ Safety Zone
- Highlighted Feature
- ⚡ Aerial Hazard
- Contained
- Uncontained
- Expressway
- Secondary Hwy
- Local Connector
- Major Roads
- County Road
- Cities

0 1 2 4 6 8 Miles

North American 1983 Datum. LatLong Grid