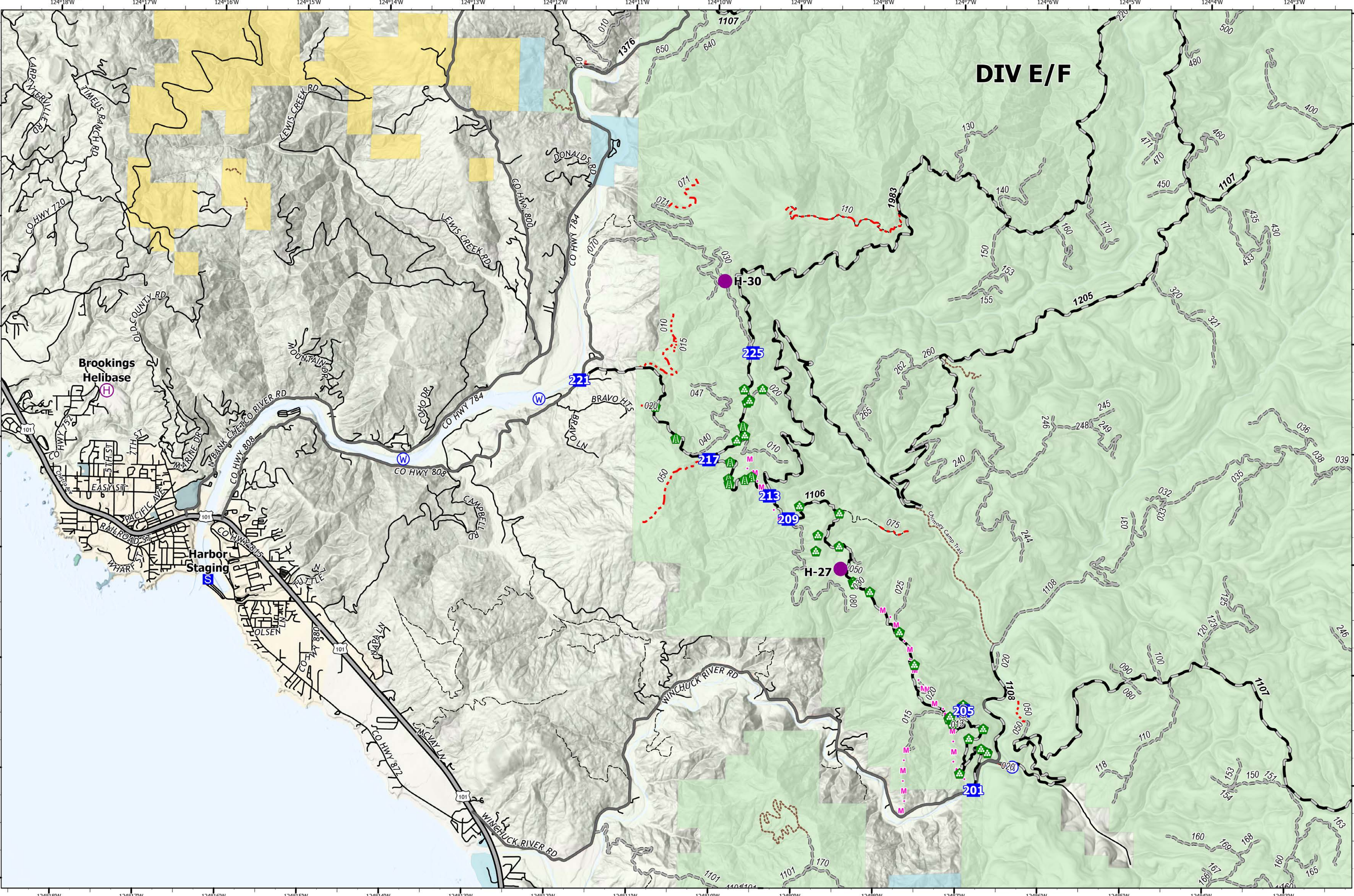



Transportation - DIV E/F



Smith River Complex
CA-SRF-000968
9/28/2023
94,568 acres at 9/26/2023 @ 1940 PDT

- | | | | | | |
|---|--|---|--|---|---|
| <ul style="list-style-type: none"> ● Helispot H Helibase D Drop Point S Staging Area | <ul style="list-style-type: none"> ■ Road Repair ■ Landing or Log Deck W Water Source | <ul style="list-style-type: none"> M · M Planned Mixed Construction Line <p>USGS Roads</p> <ul style="list-style-type: none"> Secondary Hwy | <ul style="list-style-type: none"> Local Road 4WD <p>Forest Service Roads</p> <ul style="list-style-type: none"> Paved Road | <ul style="list-style-type: none"> Gravel Road Unimproved Roads Closed Roads Trail | <p>Jurisdictional Agency</p> <ul style="list-style-type: none"> City, County, Other State BLM USFS USFWS |
|---|--|---|--|---|---|



PNW8
9/27/2023 2216
Acres from NIROPS
North American 1983 Datum, LatLong Grid

