

# Branch VIII Repair

T40S R13W

T40S R12W

T40S R13W

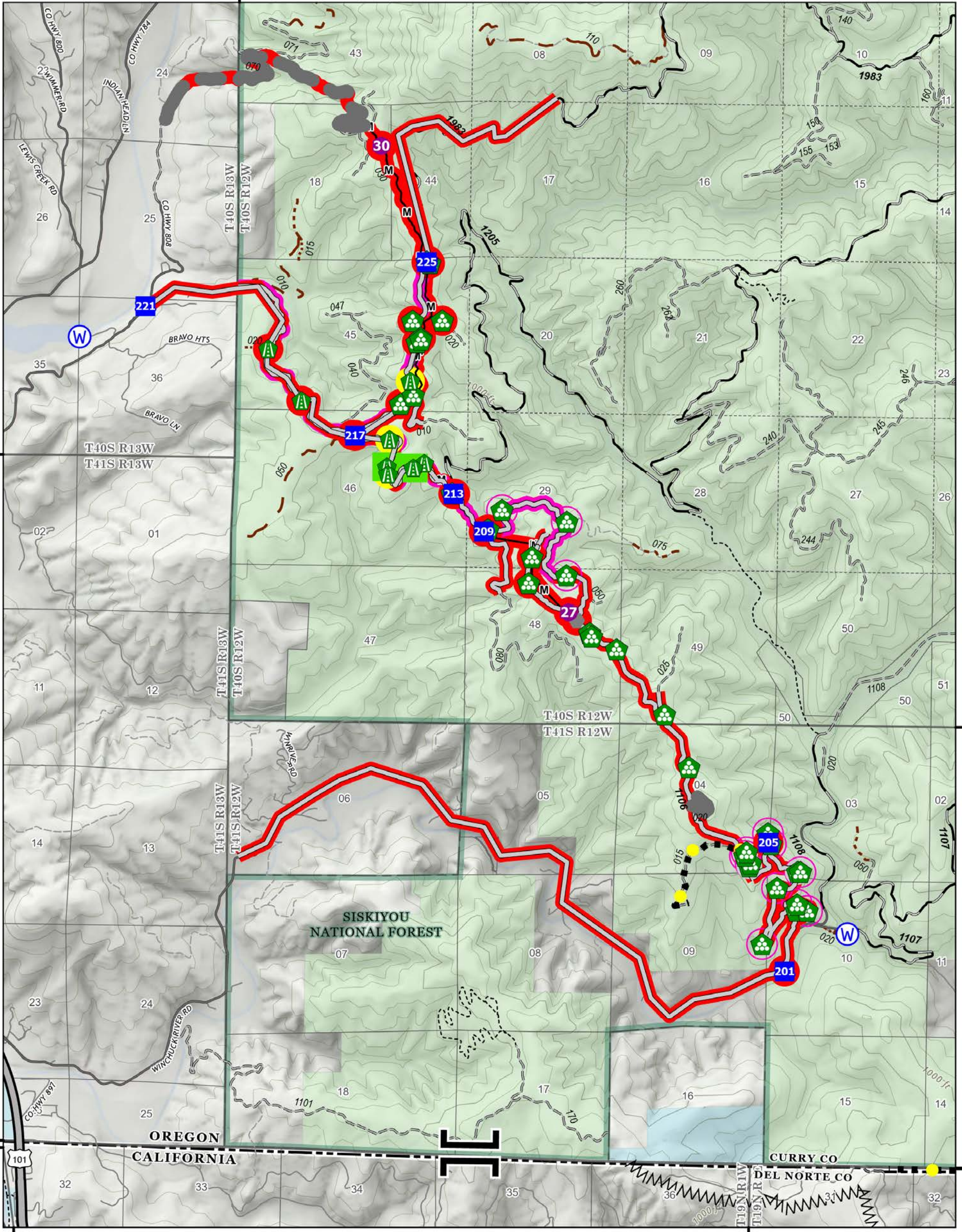
T40S R12W

T41S R13W

T41S R12W

T19N R1W

T19N R1E



## Smith River Complex CA-SRF-000968

10/02/2023

94,606 acres  
at 9/28/2023  
@ 1940 PDT

North American 1983 Datum

- |   |  |  |   |  |
|---|--|--|---|--|
| <ul style="list-style-type: none"> <li>● Helispot</li> <li>II Branch Break</li> <li>■ Drop Point</li> <li>● Other</li> <li>▲ Road Repair</li> <li>▲ Landing or Log Deck</li> <li>▲ Culvert</li> </ul> | <ul style="list-style-type: none"> <li>⊙ Water Source</li> <li>○ In Use - Fire Management</li> <li>● Repair Needed</li> <li>● Completed - Ready for Inspection</li> <li>■ Completed - Inspected</li> </ul> | <ul style="list-style-type: none"> <li>● Other - See Comments</li> <li>⊗ Completed Dozer Line</li> <li>M Completed Fuel Break</li> <li>M- Completed Mixed Construction Line</li> </ul> | <ul style="list-style-type: none"> <li>— Access or Improved Road</li> <li>● Highlighted Feature</li> <li>● Other</li> <li>■ In Use - Fire Management</li> <li>■ Needs Assessment</li> <li>■ Repair Needed</li> <li>--- Trail</li> </ul> | <ul style="list-style-type: none"> <li>● State or Territory</li> <li>● ACEC - Primary</li> <li>■ Area of Environmental Concern</li> <li>■ ACEC - Research Natural Area</li> <li>■ Botanical Areas</li> <li>■ Forest Service</li> </ul> |
|---|--|--|---|--|

