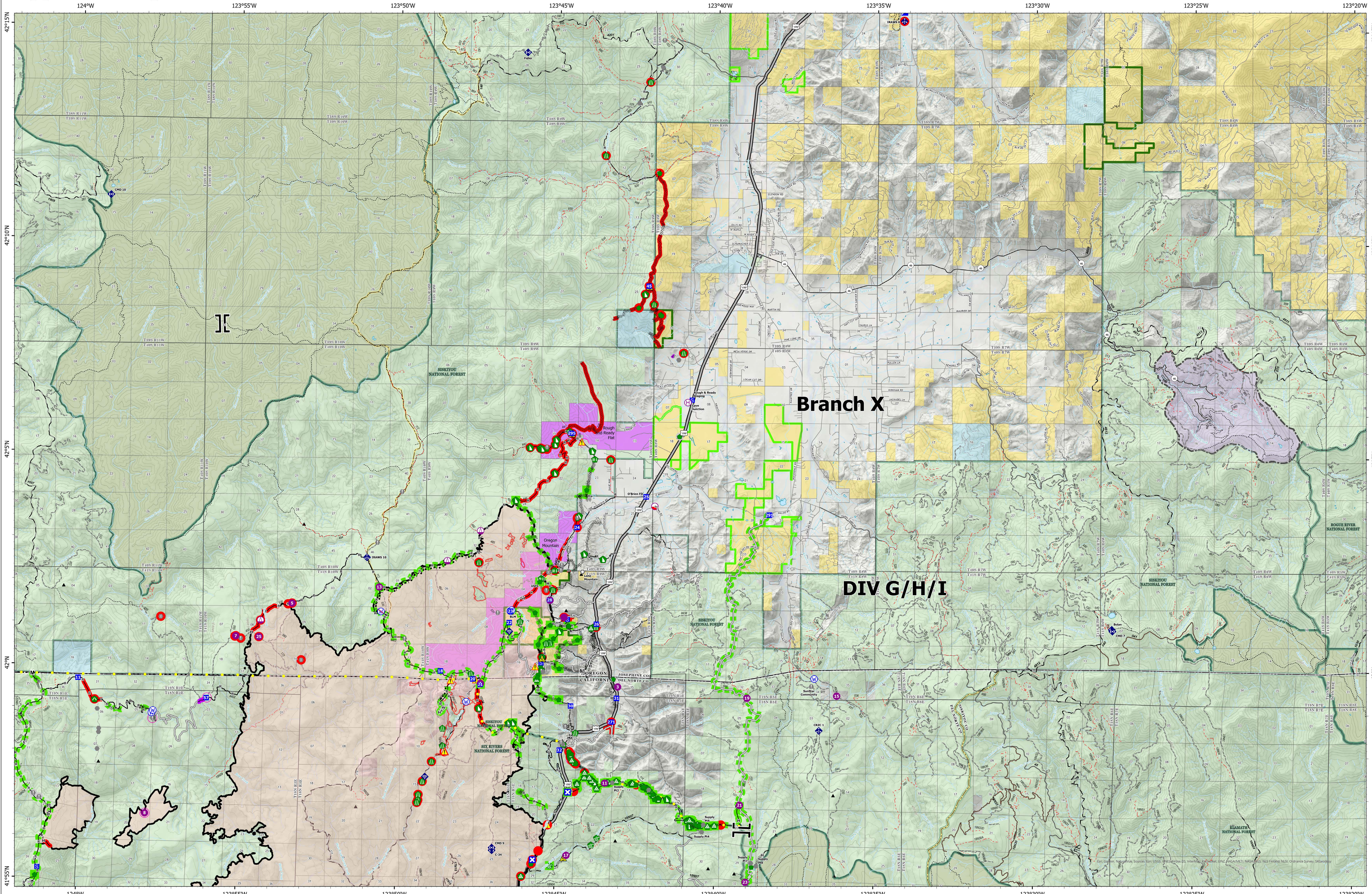


Suppression Repair Branch X



Smith River Complex North
CA-SRF-000968

10/02/2023
94,606 acres at 9/28/2023 @ 1940 PDT

North American 1983 Datum. Lat/Long Grid

- | | | | | | | | | | | | |
|-------------------------|-----------------|---------------------------------|-----------------------|----------------------------|------------------------------------|-------------------------------------|---------------------------------------|------------------------|--|-----------------------------|---------------|
| ▲ Peaks | ■ Drop Point | Water Development or Draft Site | ● Dozer Push | ● Restricted Water Source | ■ Completed - Ready for Inspection | ■ Completed Burnout | ■ Completed Road as Line | ■ Repair Needed | ■ Uncontained | ■ NPS | ■ USFS |
| ● Mobile Retardant Base | ■ Closure | ● Stream Crossing | ● Culvert | ● In Use - Fire Management | ■ Completed - Inspected | ■ Completed Dozer Line | ■ Access or Improved Road | ■ In Progress | ■ Trail | ■ Forest Service | ■ USFSW |
| ● Helibase | ● Value at Risk | ● Road Repair | ● Mobile Weather Unit | ● Needs Assessment | ■ No Repair Needed | ■ Completed Fuel Break | ■ Highlighted Feature | ■ Ready for Inspection | ■ ACEC - Primary Area of Environmental Concern | ■ National Wilderness Areas | ■ BIA, Tribal |
| ● Sling Site | ● Landmark | ● Repair Point | ● Internet Access | ● In Progress | ■ Other - See Comments | ■ Completed Hand Line | ■ In Use - Fire Management Assessment | ■ Inspected | ■ ACEC - Research Natural Area | ■ City, County, Other | ■ DOE, Other |
| ■ Branch Break | ● Fire Station | ● Landing or Log Deck | ● Repeater | ● In Progress | | ■ Completed Mixed Construction Line | ■ Needs Assessment | ■ Other - See Comments | ■ Botanical Areas | ■ State | ■ Federal |
| ■ Incident Command Post | ● Bridge | ● Fence - Cut/ Damaged | ● Safety Zone | ● Hazard | | | | ■ Contained | ■ State or Territory | ■ BLM | ■ BOR |
| | | | ● Water Source | | | | | | | ■ ANCSA/Private | ■ No Agency |