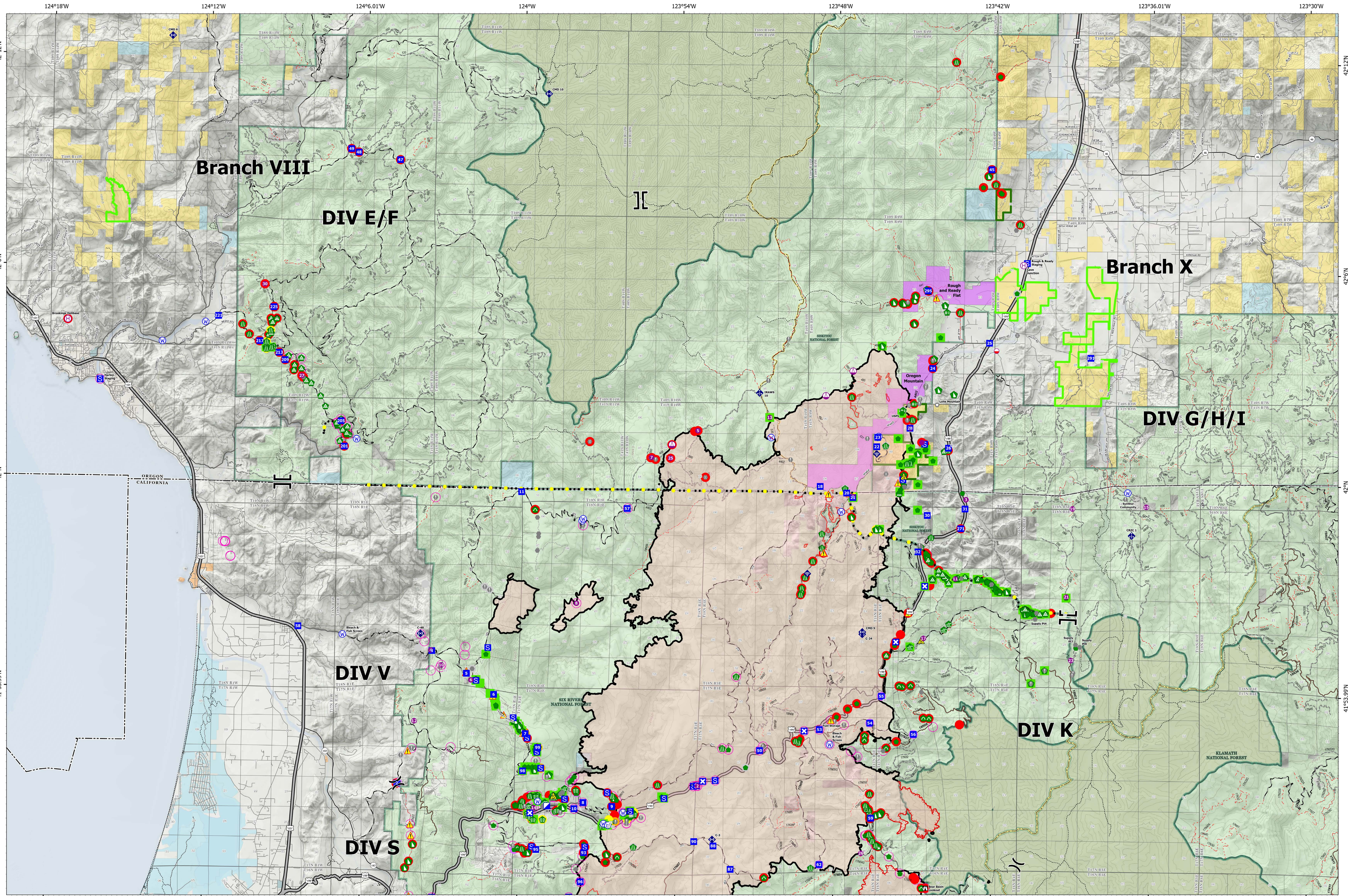





# Point Suppression Repair



- ▲ Peaks
- Mobile Retardant Base
- Helispot
- Helibase
- Sling Site
- ⌘ Division Break
- ⌘ Branch Break
- Landmark
- Fire Station
- Bridge
- Water
- Development or Draft Site
- Stream Crossing
- Road Repair
- Resource Location
- Repair Point
- Landing or Log Deck
- Fence - Cut/ Damaged
- Dozer Push
- Culvert
- Clean Up Area
- Mobile Weather Unit
- Internet Access
- Repeater
- ▲ Safety Zone
- ▲ Hazard
- Repair Needed
- In Progress
- Restricted Water Source
- In Use - Fire Management
- Needs Assessment
- Value at Risk
- Other
- Completed - Ready for Inspection
- Completed - Inspected
- No Repair Needed
- Other - See Comments
- Highlighted Feature
- Contained
- Uncontained
- Trail
- ACEC - Primary
- Area of Environmental Concern
- ACEC - Research Natural Area
- Botanical Areas
- State or Territory
- Forest Service
- National Wilderness Areas
- City, County, Other
- State
- ANCSA, Private
- USFS
- USFWS
- BIA, Tribal
- NPS

0 1 2 4 6 8 Miles