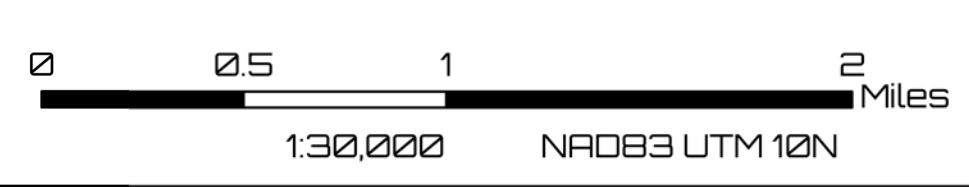


<ul style="list-style-type: none"> Dip Site Helispot Unimproved Landing Area Division Break Branch Break Incident Command Post Drop Point Closure Staging Area Value at Risk Gate Bridge Mobile Weather Unit Repeater Hazard 	<ul style="list-style-type: none"> Water Source Vertical Mine Openings Historic Dozer Line Completed Burnout Completed Dozer Line Completed Fuel Break Completed Hand Line Completed Mixed Construction Line Planned Road as Line Planned Fuel Break Planned Mixed Construction Line Planned Secondary Line Highlighted Feature (Zone Break) Aviation Route 	<ul style="list-style-type: none"> USFS Launch and Recovery Zone Fire Edge (Field Collection) Contained Uncontained Smith River Co. Wildfire Perimeter Interstate Highway Local Connecting Road Local Road Controlled-access Highway Secondary Highway or Major Connecting Road Local Connecting Road Local Road 	<ul style="list-style-type: none"> 4WD Closed Road Paved Road Gravel Road Primitive Road Cleared Road Trail National Designated Trail Water Trail National Designated Water Trail Tunnel Administrative FS Boundary Ranger District Boundary Other Designated Boundary Smith River NRA (IA-Responsibility)
---	---	---	---

OPERATIONS
BRANCH V
 Smith River Complex
 CA-SRF-000968
 10/02/2023



Smith River Complex
 CA-SRF-000968
OPS
BRANCH V
 10/02/2023