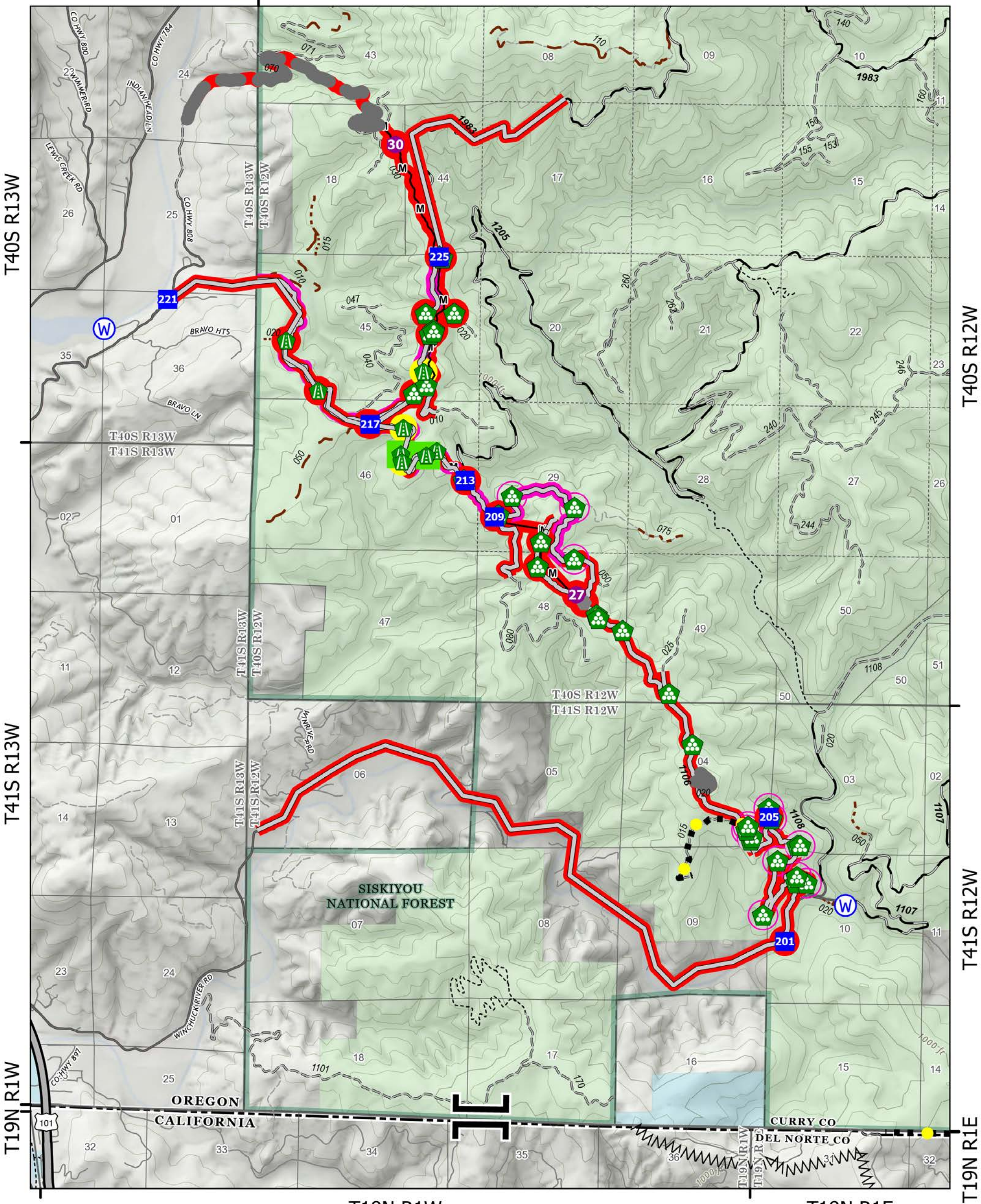


# Branch VIII Repair

T40S R13W

T40S R12W



## Smith River Complex

CA-SRF-000968

10/03/2023

94,606 acres  
at 9/28/2023  
@ 1940 PDT

North American 1983 Datum

- |                       |                                    |                                     |                                   |                            |
|-----------------------|------------------------------------|-------------------------------------|-----------------------------------|----------------------------|
| ● Helispot            | ⊕ Water Source                     | ● Other - See Comments              | M Planned Mixed Construction Line | ■ In Use - Fire Management |
| ⌈ Branch Break        | ○ In Use - Fire Management         | XXXX Completed Dozer Line           | — Access or Improved Road         | ■ Needs Assessment         |
| ■ Drop Point          | ● Repair Needed                    | AAAA Completed Fuel Break           | ● Highlighted Feature             | ■ Repair Needed            |
| ● Other               | ● Completed - Ready for Inspection | — Completed Mixed Construction Line | ■ Other                           | --- Trail                  |
| ▲ Road Repair         | ■ Completed - Inspected            |                                     | ■ Temporary Flight Restriction    | ● State or Territory       |
| ▲ Landing or Log Deck |                                    |                                     |                                   | ■ Botanical Areas          |
| ▲ Culvert             |                                    |                                     |                                   | ■ Forest Service           |

