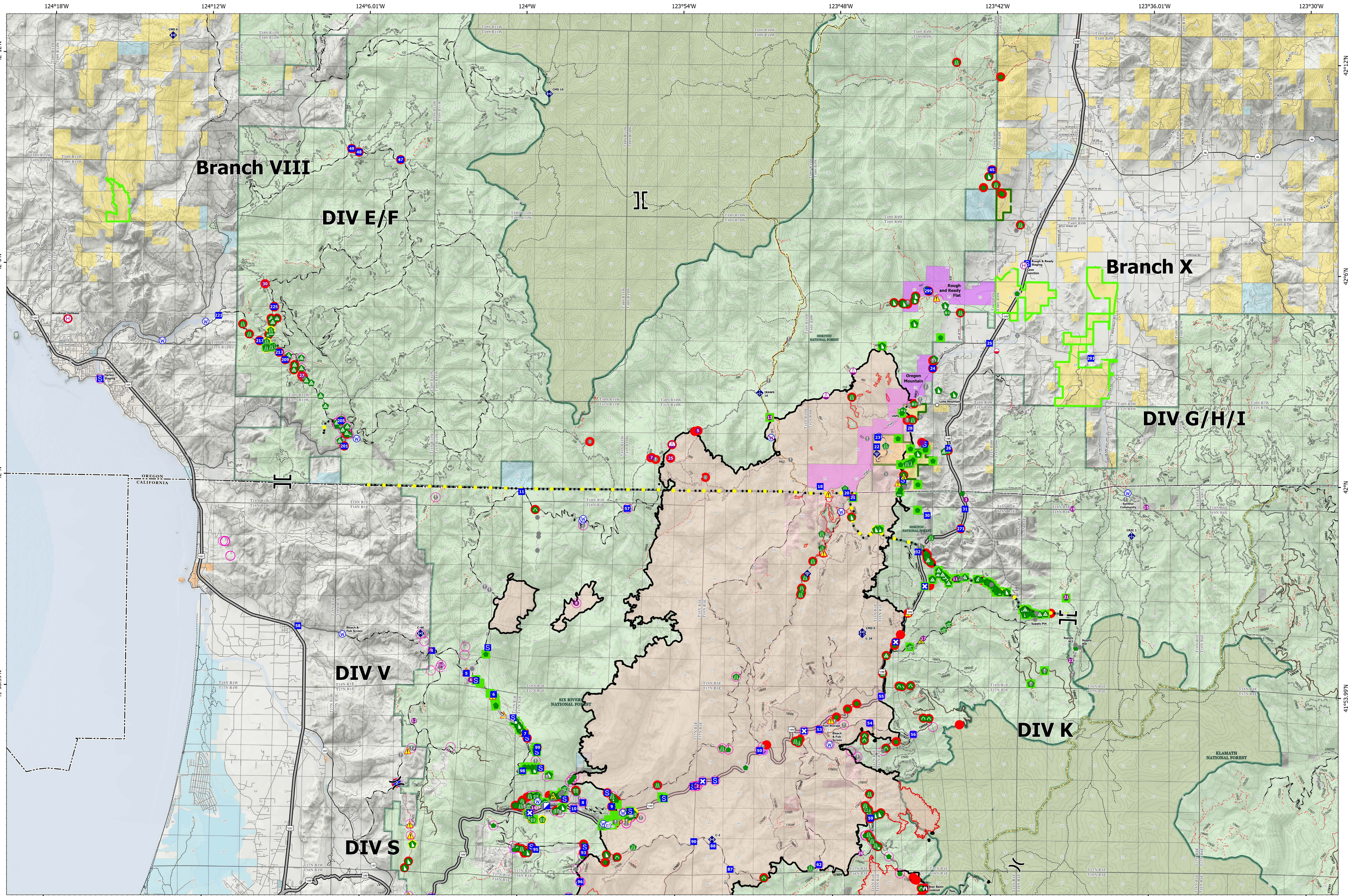


Point Suppression Repair



- | | | | | | | | | | |
|-------------------------|-------------------------|-----------------------------|------------------------|-------------------|----------------------------|------------------------------------|--|--------------------------------|------------------|
| ▲ Peaks | ■ Incident Command Post | ○ Landmark | ● Resource Location | ● Clean Up Area | ○ Restricted Water Source | ● Completed - Ready for Inspection | ● Highlighted Feature | ● ACEC - Research Natural Area | ● State |
| ● Mobile Retardant Base | ■ Drop Point | ● Fire Station | ● Repair Point | ● Bridge | ● In Use - Fire Management | ● Completed - Inspected | ● Contained | ● Botanical Areas | ● ANCSA, Private |
| ● Helispot | ■ Closure | ● Water | ● Landing or Log Deck | ● Internet Access | ● Needs Assessment | ● No Repair Needed | ● Uncontained | ● State or Territory | ● USFS |
| ● Helibase | ■ Staging Area | ● Development or Draft Site | ● Fence - Cut/ Damaged | ● Repeater | ● Hazard | ● Other - See Comments | ● Trail | ● Forest Service | ● USFSWS |
| ● Sling Site | ■ Lookout | ● Stream Crossing | ● Dozer Push | ● Safety Zone | ● Value at Risk | | ● ACEC - Primary Area of Environmental Concern | ● National Wilderness Areas | ● BIA, Tribal |
| ● Division Break | ● Other | ● Road Repair | ● Culvert | ● Hazard | ● Other | | | ● City, County, Other | ● NPS |

0 1 2 4 6 8 Miles