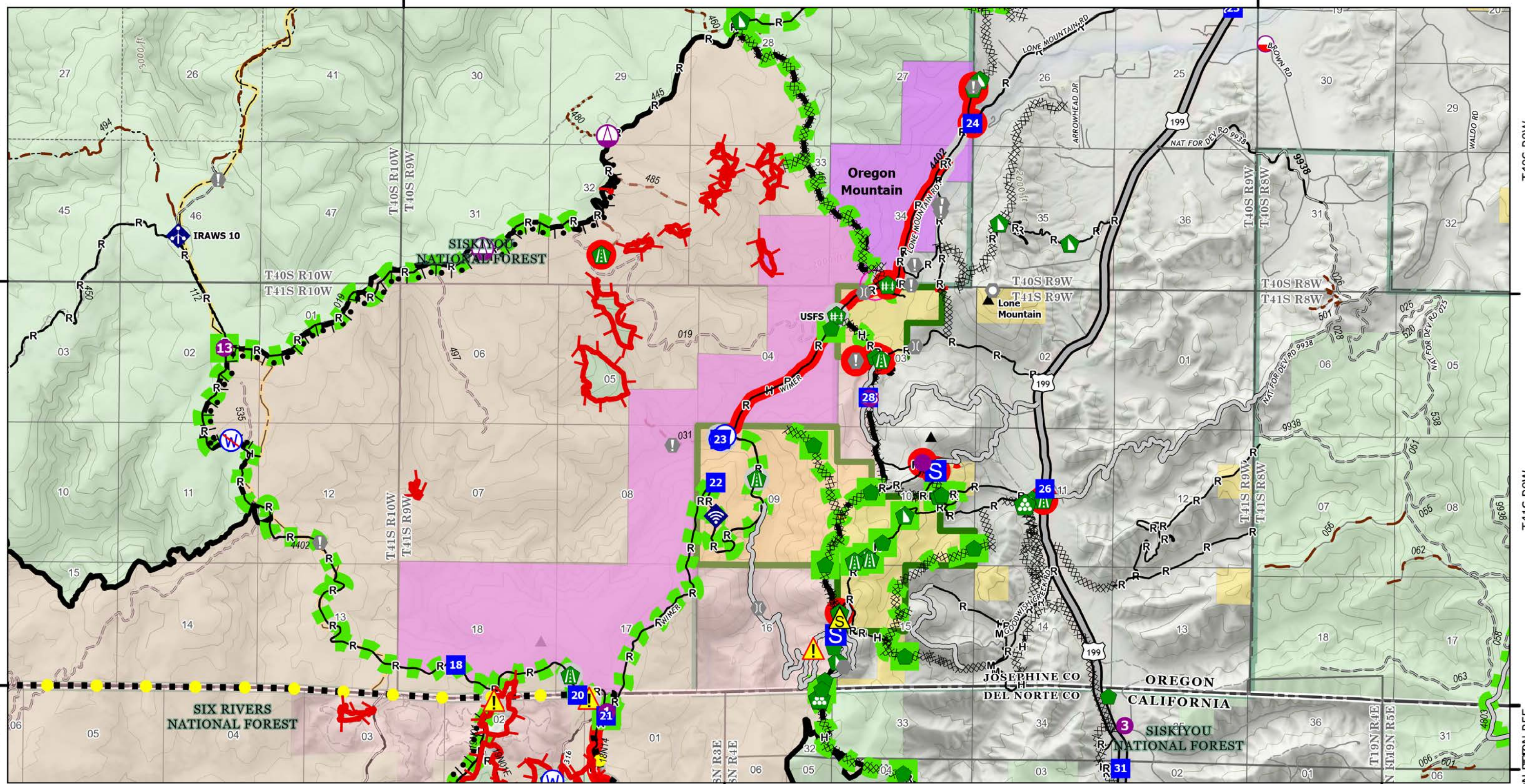


Oregon Mountain Repair

T40S R10W

T40S R9W

T40S R8W



Smith River Complex CA-SRF-000968

10/04/2023
94,606 acres at
9/28/2023 @
1940 PDT
North American 1983 Datum

- | | | | | | | | |
|-------------------------|-----------------|-----------------------------------|-----------------------|----------------------------|----------------------------|--------------------------------------|------------------------------------|
| ▲ Peaks | ● Value at Risk | 🏠 Water Development or Draft Site | 🚧 Dozer Push | 🚫 Restricted Water Source | --- Trail | M— Completed Mixed Construction Line | 🟡 Completed - Ready for Inspection |
| 🚚 Mobile Retardant Base | ● Other | 🛠 Road Repair | 📶 Mobile Weather Unit | 🟡 In Use - Fire Management | ⬛ Completed Burnout | R— Completed Road as Line | 🟢 Completed - Inspected |
| 📍 Helispot | 📍 Landmark | 🏠 Repair Point | 📶 Internet Access | 🔴 Repair Needed | XXXXX Completed Dozer Line | — Access or Improved Road | 🟡 Other - See Comments |
| 📍 Sling Site | 📍 Fire Station | 🏠 Landing or Log Deck | ⚠ Safety Zone | 🟢 Completed - Inspected | AAAAA Completed Fuel Break | ● Highlighted Feature | 🟢 ACEC - Research Natural Area |
| 📍 Drop Point | 📍 Bridge | 🏠 Fence - Cut/Damaged | ⚠ Hazard | ● Other - See Comments | — Completed Hand Line | 🔴 Repair Needed | 🟡 Botanical Areas |
| 📍 Staging Area | | | 🚫 Water Source | | | | |



0 0.25 0.5 1 Miles