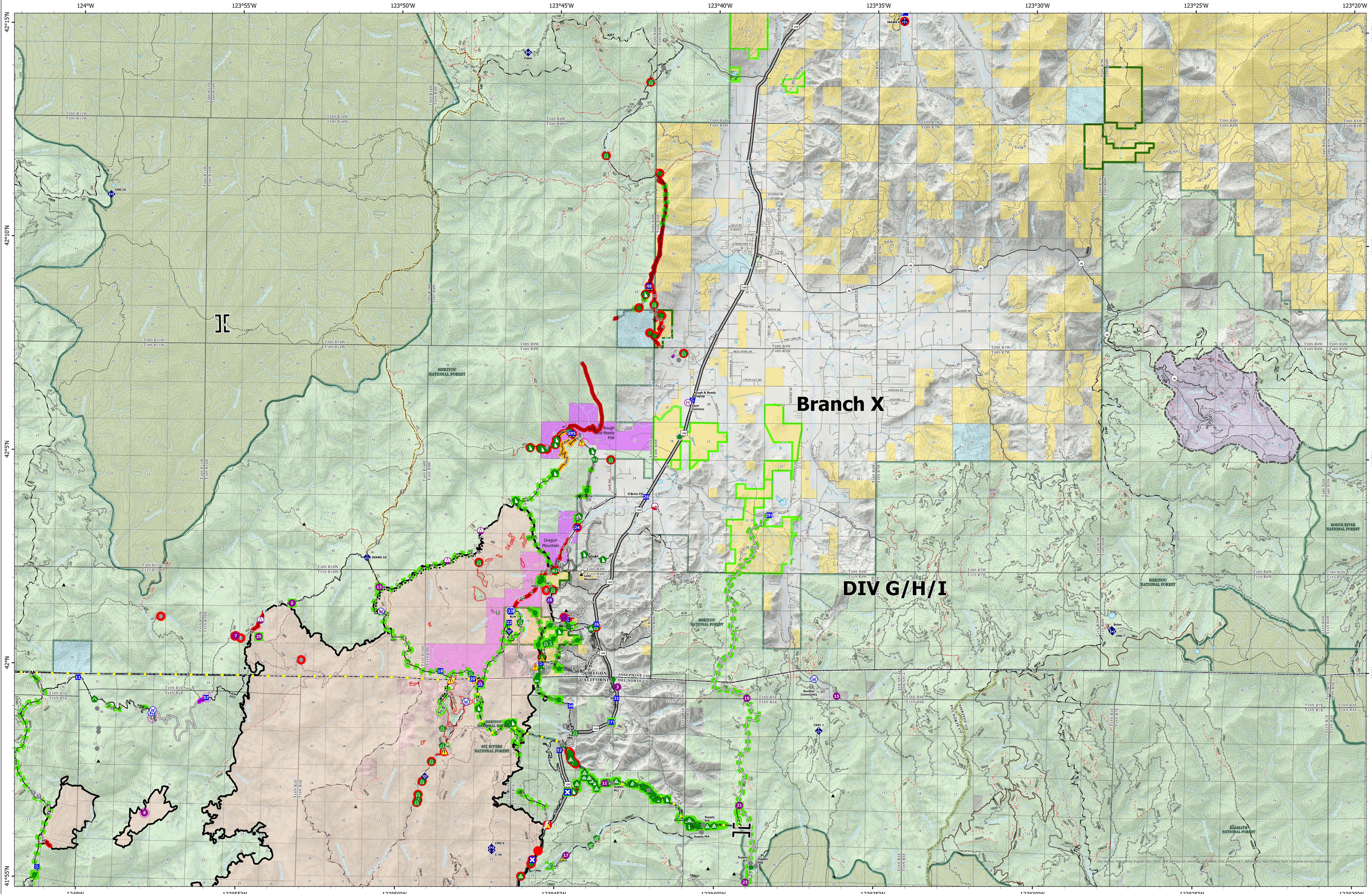


Suppression Repair Branch X



Smith River Complex North
CA-SRF-000968

10/05/2023
 94,606 acres at 9/28/2023 @ 1940 PDT

North American 1983 Datum, Lat/Long Grid

- | | | | | | | | | | | | |
|-------------------------|-----------------------------------|------------------------|---------------------------|------------------------------------|-------------------------|-------------------------------------|----------------------------|------------------------------------|--|------------------|----------------------|
| ▲ Peaks | ■ Closure | ● Stream Crossing | ◆ Mobile Weather Unit | ○ In Use - Fire Management | ■ Completed - Inspected | — Completed Fuel Break | ● Highlighted Feature | ■ Completed - Ready for Inspection | ■ ACEC - Primary Area of Environmental Concern | ■ NPS | ■ USFWS |
| ● Mobile Retardant Base | ■ Staging Area | ● Road Repair | ◆ Internet Access | ○ Needs Assessment | ■ No Repair Needed | — Completed Hand Line | ■ In Use - Fire Management | ■ Completed - Inspected | ■ ACEC - Research Natural Area | ■ Forest Service | ■ BIA, Tribal |
| ● Helibase | ● Other | ● Repair Point | ◆ Repeater | ● Needs Assessment | ○ Other - See Comments | — Completed Mixed Construction Line | ● Needs Assessment | ■ Other - See Comments | ■ National Wilderness Areas | ■ National | ■ DOE, Other Federal |
| ● Sling Site | ● Fire Station | ● Landing or Log Deck | ◆ Safety Zone | ● In Progress | ■ Completed Burnout | — Completed Road as Line | ● In Progress | ■ Contained | ■ City, County, Other | ■ State | ■ DOD |
| ■ Branch Break | ● Bridge | ● Fence - Cut/ Damaged | ◆ Hazard | ● Ready for Inspection | ■ Completed Dozer Line | — Access or Improved Road | ● In Progress | ■ Uncontained | ■ BLM | ■ ANCSA/Private | ■ BOR |
| ■ Incident Command Post | ● Water Development or Draft Site | ● Dozer Push | ◆ Water Source | ● Completed - Ready for Inspection | ■ Completed Dozer Line | — Trail | ● In Progress | ■ Contained | ■ State or Territory | ■ USFS | ■ No Agency |
| ■ Drop Point | ● Clean Up Area | ● Culvert | ◆ Restricted Water Source | ● Completed - Ready for Inspection | ■ Completed Dozer Line | — Trail | ● In Progress | ■ Uncontained | ■ State or Territory | ■ USFS | ■ No Agency |