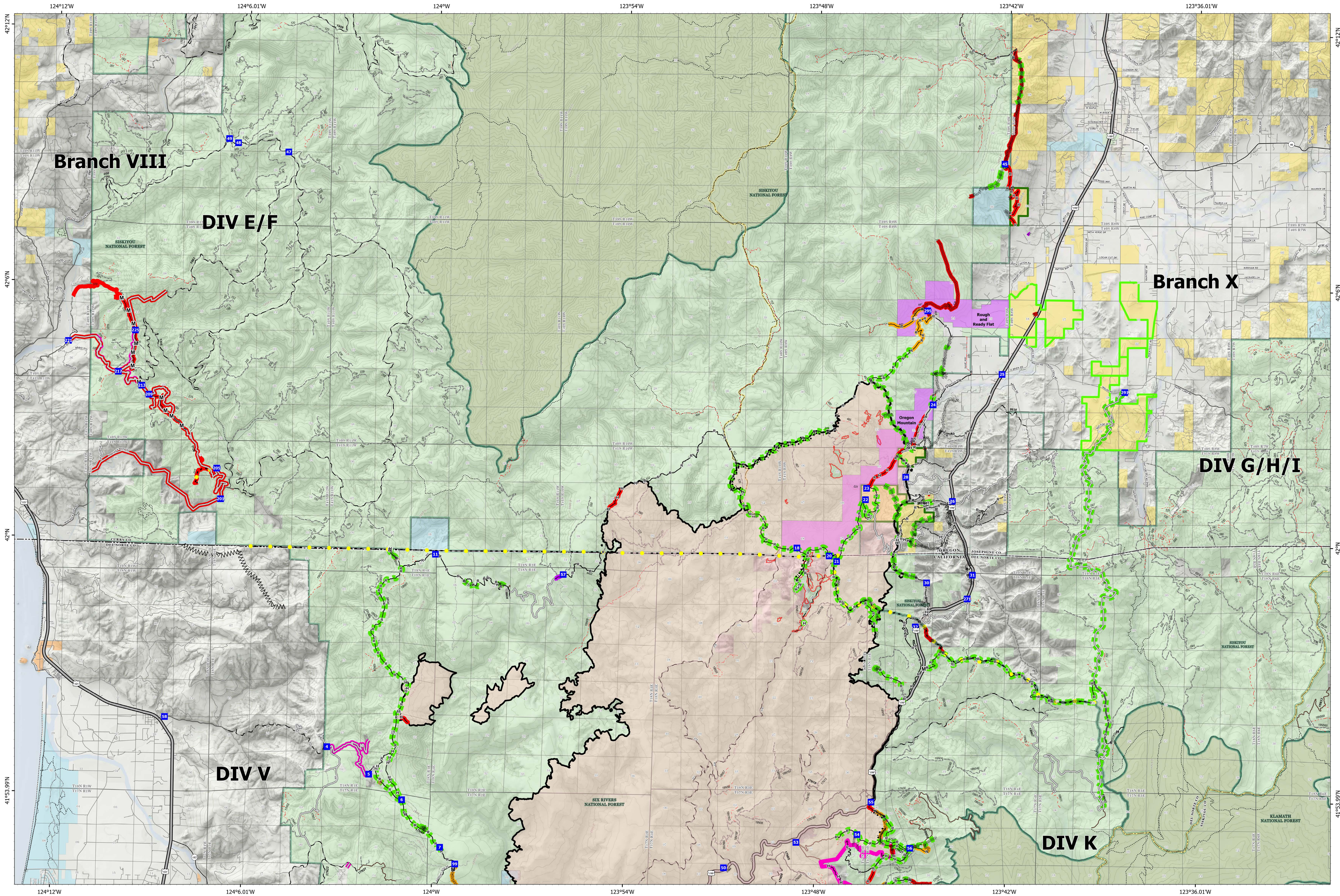




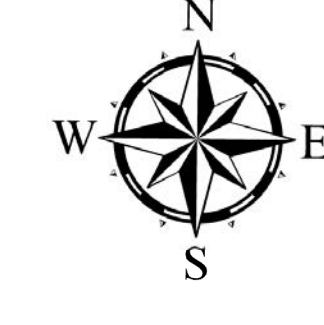
# Linear Suppression Repair



**Smith River Complex North**  
**CA-SRF-000968**  
**10/05/2023**  
 94,606 acres at 9/28/2023 @ 1940 PDT

North American 1983 Datum, Lat/Long Grid

- Drop Point
- Completed Hand Line
- Completed Mixed Construction Line
- Completed Road as Line
- Completed Dozer Line
- Completed Fuel Break
- Access or Improved Road
- Highlighted Feature
- Repair Line
- In Use - Fire Management
- Needs Assessment
- Repair Needed
- In Progress
- Completed - Ready for Inspection
- Completed - Inspected
- Other - See Comments
- Contained
- Uncontained
- Botanical Areas
- ACEC - Primary Area of Environmental Concern
- ACEC - Research Natural Area
- ACEC - State or Territory
- County or Equivalent
- National Wilderness Areas
- City, County, Other
- State
- BLM
- ANCSA, Private
- USFS
- BIA, Tribal
- NPS

0 0.5 1 2 3 4 Miles