

Oregon Mountain Repair

T40S R10W

T40S R9W

T40S R8W

T40S R10W

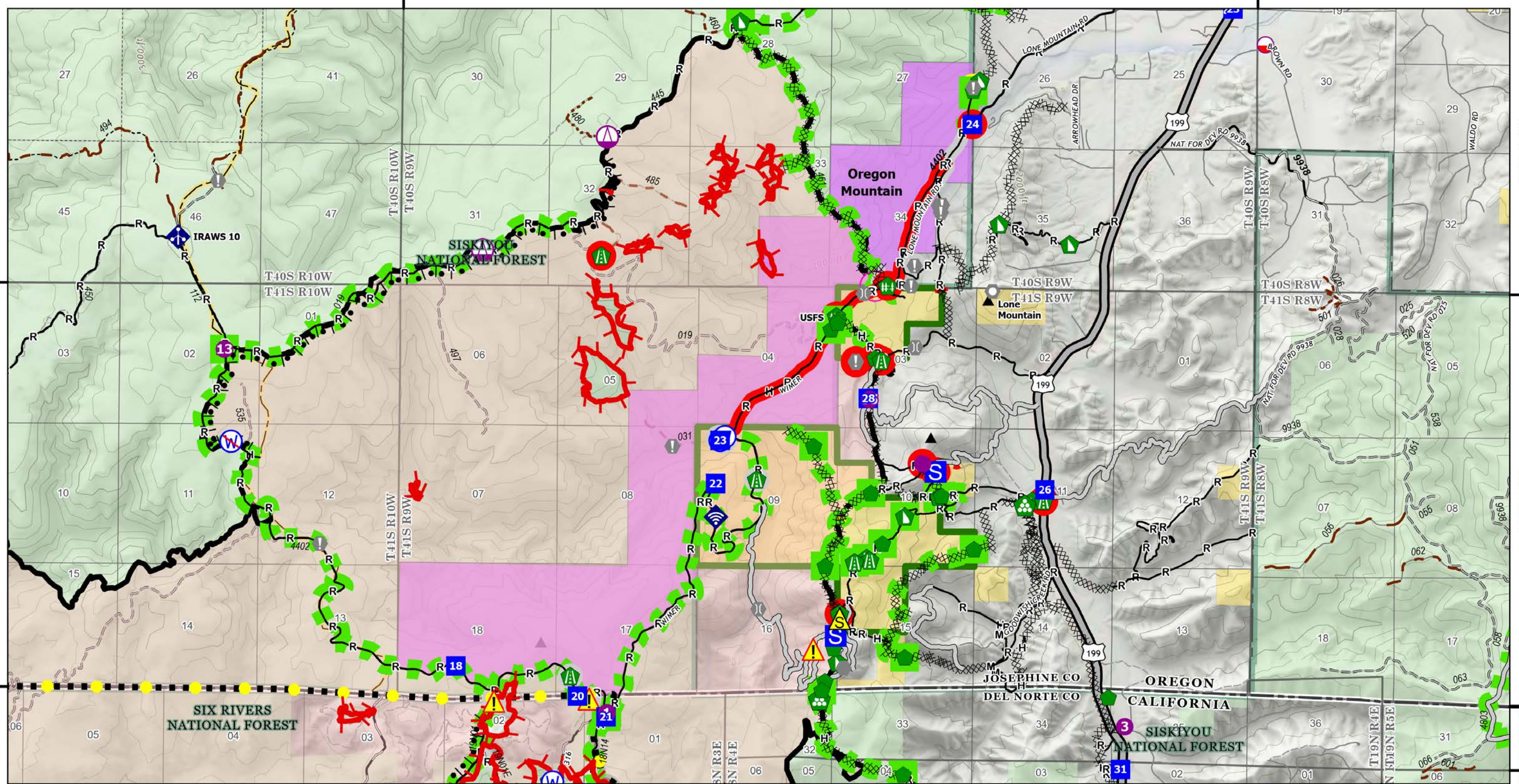
T40S R8W

T41S R10W

T41S R8W

T18N R3E

T18N R5E



Smith River Complex

CA-SRF-000968

10/05/2023

94,606 acres at
9/28/2023 @
1940 PDT

North American 1983 Datum

- | | | | | | | | |
|-------------------------|-----------------|-----------------------------------|-----------------------|------------------------------------|------------------------|-------------------------------------|------------------------------------|
| ▲ Peaks | ⚠ Value at Risk | 🏠 Water Development or Draft Site | 🚧 Dozer Push | 🚫 Restricted Water Source | ⚪ Other - See Comments | — Completed Mixed Construction Line | 🟡 Completed - Ready for Inspection |
| 🚚 Mobile Retardant Base | 📍 Other | 🛣 Road Repair | 📶 Mobile Weather Unit | 🟡 In Use - Fire Management | ⋯ Trail | — Completed Road as Line | 🟢 Completed - Inspected |
| 📍 Helispot | 📍 Landmark | 🏠 Repair Point | 📶 Internet Access | 🔴 Repair Needed | ⋯ Completed Burnout | — Access or Improved Road | ⚪ Other - See Comments |
| 📍 Sling Site | 📍 Fire Station | 🏠 Landing or Log Deck | ⚠ Safety Zone | 🟡 Completed - Ready for Inspection | ⋯ Completed Dozer Line | ● Highlighted Feature | 🟢 ACEC - Research Natural Area |
| 📍 Drop Point | 📍 Bridge | 🏠 Fence - Cut/Damaged | ⚠ Hazard | 🟢 Completed - Inspected | ⋯ Completed Fuel Break | 🔴 Repair Needed | 🟡 Botanical Areas |
| 📍 Staging Area | | | 🚫 Water Source | | ⋯ Completed Hand Line | | |

