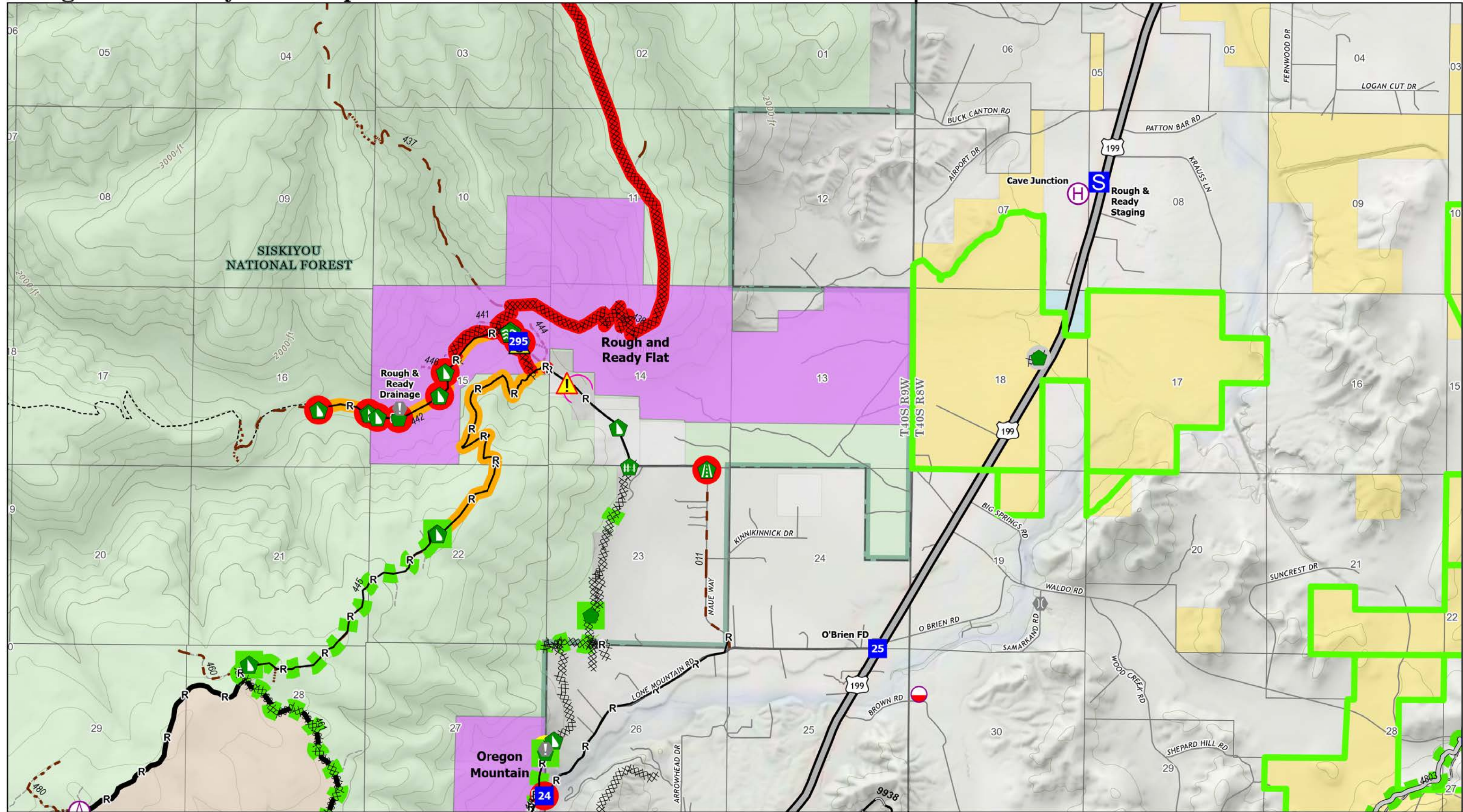


Rough and Ready Flat Repair

T40S R9W




T40S R8W



Smith River Complex CA-SRF-000968

10/05/2023
94,606 acres at 9/28/2023 @ 1940 PDT

North American 1983 Datum

▲ Peaks	🚒 Fire Station	🧹 Clean Up Area	🟩 Completed - Inspected	🚧 Suppression Repair Event Line	🟩 Completed - Inspected	T40S R8W	  
🚚 Mobile Retardant Base	🌉 Bridge	⚠️ Safety Zone	⚪ Other - See Comments	🟪 In Use - Fire Management	⚪ Other - See Comments	H — Completed	
🏠 Helibase	🌳 Stream Crossing	⚠️ Hazard	⚫ Trail	🟪 Needs Assessment	🟩 Event Line	M — Completed Mixed	
🏠 Sling Site	🛠️ Road Repair	🚫 In Use - Fire Management	🗺️ State or Territory	🔴 Repair Needed	🟩 Ops Completed	P — Completed	
📍 Drop Point	🛠️ Repair Point	🟡 Completed - Ready for Inspection	🌿 Botanical Areas	🟠 In Progress	🟩 Completed Burnout	R — Completed	
📍 Staging Area	🚧 Fence - Cut/Damaged		🌳 Forest Service	🟡 Completed - Ready for Inspection	⚫ Completed Dozer Line	Ops Planned	
📍 Value at Risk	🚧 Dozer Push				⚫ Completed Fuel Break	Planned	

