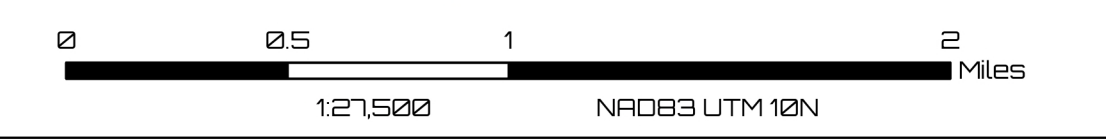


- | | | | | |
|--|---|---|---|---|
| <ul style="list-style-type: none"> ● Dip Site ● Helispot ● Division Break ● Branch Break ● Incident Command Post ● Drop Point ● Closure ● Staging Area ● Value at Risk ● Other ● Gate | <ul style="list-style-type: none"> ● Bridge ● Water Development or Draft Site ● Structure Wrap ● Stream Crossing ● Road Repair ● Retardant in Avoidance Area ● Resource Location ● Camp ● Landing or Log Deck ● Lookout ● Hazard Tree ● Fence - Cut/Damaged ● Culvert ● Repair Line | <ul style="list-style-type: none"> ● Mobile Weather Unit ● UAS Launch and Recovery Zone ● Contained ● Uncollected ● Dip Site ● Helispot ● Division Break ● Branch Break ● Incident Command Post ● Drop Point ● Closure ● Camp | <ul style="list-style-type: none"> ● Road Repair ● UAS Launch and Recovery Zone ● Completed Fuel Break ● Completed Hand Line ● Completed Mixed Construction Line ● R- Completed Road as Line ● Access or Improved Road ● Staging Area ● Lookout ● Value at Risk ● Other ● Gate ● Clean Up Area ● Water Development or Draft Site ● Mobile Weather Unit ● UAS Launch and Recovery Zone ● Fire Edge (Field Collection) ● Retardant in Avoidance Area ● Resource Location ● Repair Point | <ul style="list-style-type: none"> ● Completed Mixed Construction Line ● R- Completed Road as Line ● Access or Improved Road ● Other ● Repair Line ● Road Repair ● UAS Launch and Recovery Zone ● Fire Edge (Field Collection) ● Smith River Co. Wildfire Perimeter ● Federal Wilderness Boundary |
|--|---|---|---|---|

SUPPRESSION REPAIR
BRANCH V, XX
 Smith River Complex
 CA-SRF-000968
 10/26/2023



Smith River Complex
 CA-SRF-000968
REPAIR
BRANCH V, XX
 10/26/2023