

) (Division Break
] [Branch Break

- Federal Wilderness Boundary
- Incident Command Post
- Camp
- Smith River Cx Fire Perimeter
- Other Incident Wildfire Perimeter
- Contained
- Uncontained

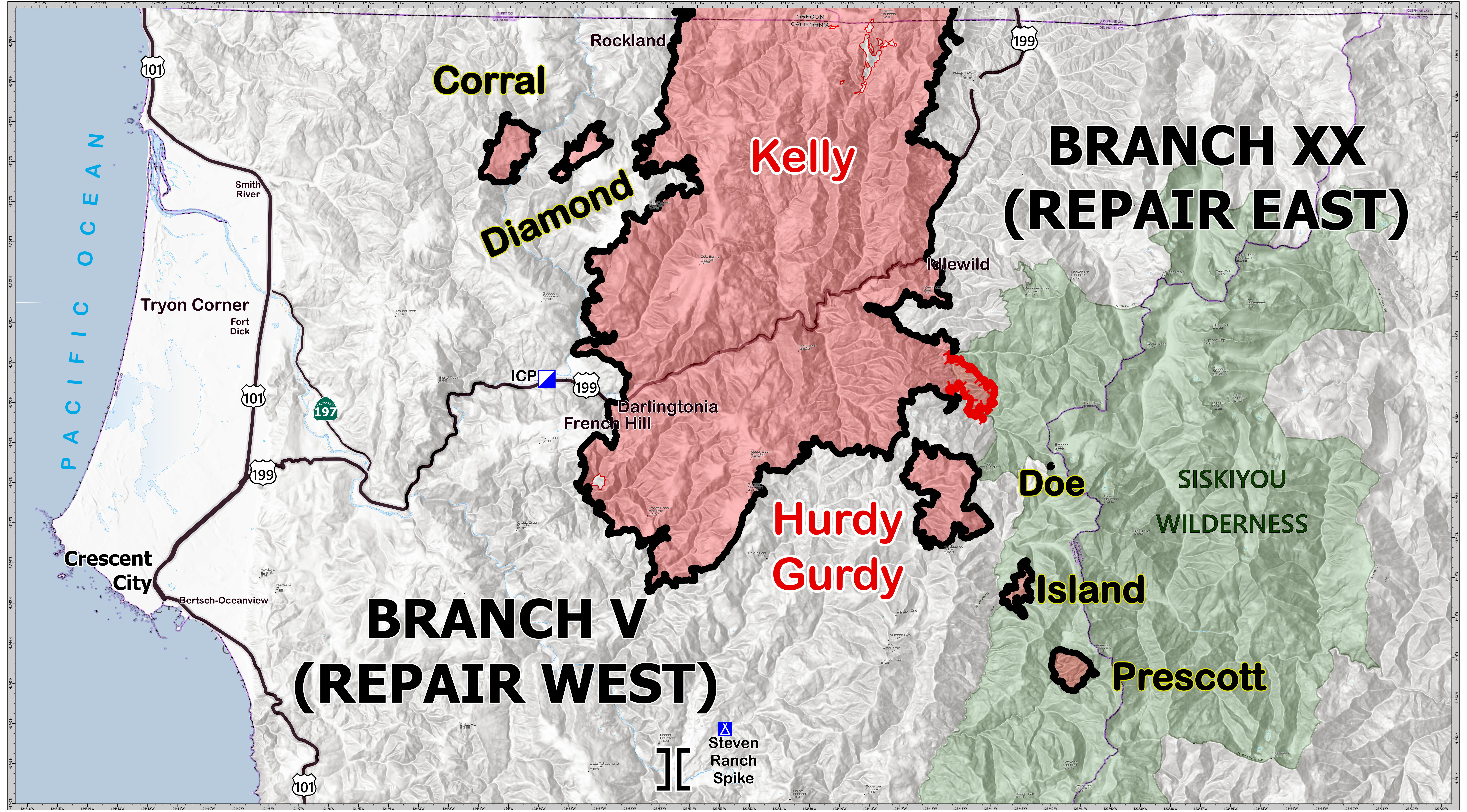
BRIEFING

Smith River Complex

CA-SRF-000968
 10/09/2023
 Est. acres 94,620 at 10/08/2023 @ 1833 PDT



0 1 2 4 Miles
 155.520 NAD83 UTM 10N



BRANCH V (REPAIR WEST)

BRANCH XX (REPAIR EAST)

Steven Ranch Spike
] [